

TELEPHONE DIRECTORY

FOR

ELLENSBURG

KITTITAS

THORP

MAY 1955



ELLENSBURG TELEPHONE COMPANY
WASHINGTON

FOR EMERGENCY CALLS SEE PAGE ONE

REFER TO THE
YELLOW PAGES

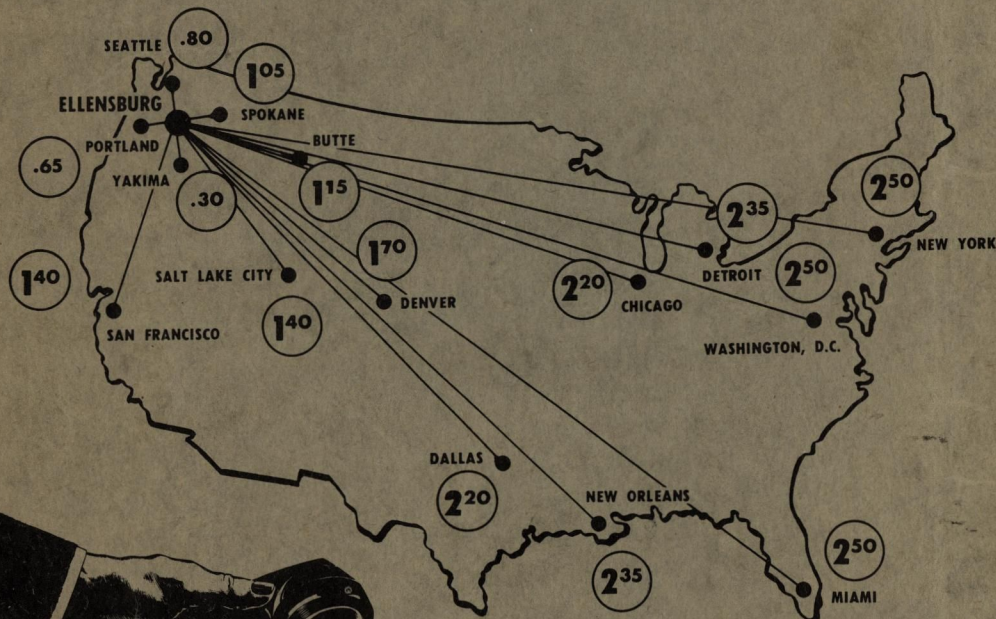


YOUR CONVENIENT
SHOPPING GUIDE

LONG DISTANCE IS CHEAPER THAN YOU THINK... ~~AND FASTER~~

The rates shown are day rates for 3-minute initial period from Ellensburg. Night and Sunday rates are even lower. Federal tax not included.

(See inside back cover for additional rates.)



All rates listed above are for an initial period of 3 minutes. For rates to other points, ask your Operator. Day rates are in effect from 4:30 A. M. to 6:00 P. M., except Sunday; night rates from 6:00 P. M. to 4:30 A. M.; night rates apply all day Sunday.

All Station-to-Station rates in excess of 10¢ and all Person-to-Person rates are for an initial period of 3 minutes. The rate for each additional minute is approximately one-third of the minimum rate. On Person-to-Person calls, after 6 minutes of conversation, the rate for additional minutes drops to that of a Station-to-Station call.

FEDERAL TAXES—A U.S. Government tax applies on all Long Distance Calls originating in the United States.

COPYRIGHT 1955 BY THE ELLENSBURG TELEPHONE COMPANY

This issue corrected to Mar. 1, 1955

Ellensburg Telephone Company



R. E. RUDOLPH, Manager

EMERGENCY CALLS ONLY

All Other Calls See Directory

MY POLICE NUMBER IS..... MY FIRE NUMBER IS.....

POLICE

Ellensburg	2-3151
If no answer dial	2-4186
Kittitas	8-3001
Sheriff	2-6106
State Patrol	2-4101

FIRE

Ellensburg Fire Dept. FIRES	2-3131
ALL OTHER BUSINESS	5-8056
Kittitas Co. Fire Dist. #2 FIRES	2-3131
ALL OTHER BUSINESS	5-8056
Kittitas City Fire Dept.	8-3343
Thorp & Rural Dist. #1	5-9654
Ambulance	2-6901
Federal Bureau of Investigation (FBI)	213
Forest Fires	2-2026

SERVICE CALLS

	Dial
INFORMATION	213
LONG DISTANCE CALLS	0
FOR CORRECT TIME	210
ASSISTANCE ON CALLS	213
REPAIR SERVICE	2-1425

AFTER 5 P M AND ON SATURDAYS, SUNDAYS AND HOLIDAYS... 213

BUSINESS TRANSACTIONS, NEW SERVICE,
MOVING TELEPHONES, BILLS, DIRECTORY LISTINGS, etc..... 2-1425

We realize that difficulties sometimes occur in spite of our best efforts to avoid them. When they do, we are anxious to correct them promptly. If your requirements are not met by calling as outlined above, please Dial 2-1425.

WARNING: WASHINGTON STATE LAW PROVIDES:

"Any person who shall wilfully refuse to yield or surrender the use of a party line to another person for the purpose of permitting such other person to report a fire or summon police, medical or other aid in case of emergency, shall be deemed guilty of a misdemeanor.

"Any person who shall ask for or request the use of a party line on pretext that an emergency exists, knowing that no emergency in fact exists, shall be deemed guilty of a misdemeanor."

Telephone Service Information

The Telephone Company desires to render the best telephone service possible; the telephone patrons desire to receive the best telephone service possible. One of the most important factors of good service is a better and wider knowledge on the part of our subscribers and patrons of the best method of using the service. The data on this and following pages contains valuable information and suggestions, a study of which will help you to use your telephone more efficiently.

APPLICATIONS

Applications for original establishment of service must be made on the Telephone Company's standard application forms. Requests from subscribers for additional service, equipment, etc., may be made orally or in writing, and upon approval or installation of the service become a part of the original application.

OWNERSHIP AND USE OF EQUIPMENT

Equipment, instruments and lines furnished by the Telephone Company on the Subscriber's premises shall be and remain the property of the Telephone Company whose agents and employees have the right to enter said premises at any reasonable hour for the purpose of installing, inspecting, or repairing the instruments and lines, or for the purposes of making collections from coin boxes, and upon termination of the service, for the purpose of removing such instruments and lines. Such equipment is not to be used for performing any part of the work of transmitting, delivering, or collecting any message where any toll or consideration has been or is to be paid any party other than the Telephone Company, without the written consent of the Telephone Company.

Subscribers must not use or permit to be used any equipment, apparatus, or device in connection with the equipment or facilities furnished by the Telephone Company, without the written consent of the Telephone Company. In case any instrument, apparatus or device of any kind other than that furnished by the Telephone Company is attached to or connected with any part of the Telephone Company's property, the Telephone Company shall have the right to remove such, or to suspend service during the continuance of said attachments or connections or to terminate service.

INTERRUPTIONS OF SERVICE

When requested by the subscribers, if service is interrupted for more than 24 hours, and for causes other than the negligence or willful act of the subscriber, an allowance shall be made, at the minimum rate for the telephone facilities and class of service affected by the interruption, for such time as the interruption continues. No other liability shall attach to the company on account of such service interruptions.

TELEPHONE NUMBERS

The subscriber has no property right in the telephone number or any right to continuance of service through any particular central office. The Telephone Company may change the telephone number or the central office designation, or both, of a subscriber whenever it deems it advisable in the conduct of its business so to do.

TELEPHONE DIRECTORIES

Directories regularly furnished to subscribers are the property of the Telephone Company; are loaned to subscribers only as an aid to the use of the telephone service, and are to be returned to the Telephone Company upon request or when new directories are issued. The Telephone Company shall have the right to make a charge for directories issued in replacement of directories lost, destroyed, defaced, or mutilated while in possession of the subscriber.

No liability arising from errors or omissions in making up or printing of its directories shall attach to the company except in the case of charge listings, in connection with which its liability shall be limited to a refund at the monthly rate for each listing for the time an error or omission continues after reasonable notice in writing to the Company.

USE OF SERVICE

Subscribers telephone service is furnished only for use by the subscriber, his family, employees, or business associates, or persons residing in the subscriber's household except as the use of the service may be extended to joint users or to persons temporarily subleasing a subscriber's residential premises. The Telephone Company has the right to refuse to install subscribers service or to permit such service to remain on premises of a public or semi-public character when the instrument is so located that the public in general or patrons of the subscriber may make use of the service. Residence telephones are installed on the understanding that they will be used for normal social purposes and not in connection with any business. Advertising residence telephone numbers for business purposes will be considered sufficient cause for the Telephone Company to charge the business rate without further notice.

PAYMENT FOR SERVICE

The subscriber is required to pay in accordance with the Telephone Company's established tariffs, collection and billing practices, all charges for exchange service and equipment, toll messages and messenger service. Bills are rendered monthly and are payable at the local business office of the Company by mail or in person. They cover local service in advance for a one month period from date of the bill and long distance service charges for a one month period ending on approximately the 15th day of the preceding month. Bills are due when rendered and are payable on or before the fifteenth (15) day of the same month after which they become delinquent.

In the event that any sum due is not paid on or before the 15th day after issuance of the bill, a written notice may be sent to the subscriber, calling attention to the fact that the amount is due; and, if payment is not made within five days thereafter, the Company may deny service without further notice.

When the service of a subscriber has been denied in accordance with the preceding paragraph a charge of \$1.00 is applicable for the restoration of service. In addition the subscriber will be required to pay all service charges up to the time of restoration of service.

GENERAL

Each subscriber is entitled to one single line insertion in the alphabetical list, without charge. By arrangement with the Company any subscriber to exchange service may have additional listings, under such regulations as apply to main listings, placed in the alphabetical section of this directory at a nominal charge.

Subscribers are requested to report promptly to the Management in writing any errors, which may be corrected in the next directory.

The Company cordially invites all users of the telephone to visit its offices for the purpose of viewing the working of the switchboard and informing themselves of the general methods used in conducting the telephone business.

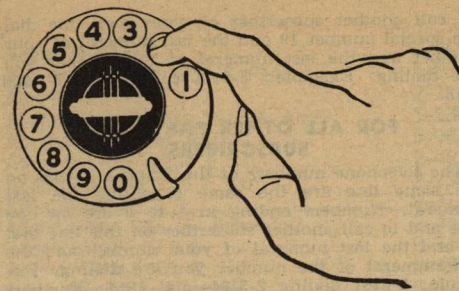
The Company desires to give the best possible service and any suggestions made by subscribers for improvements in the service will be gladly considered.

The Management deems it a special favor for subscribers to report any act of inattention or discourtesy on the part of our employees.

If you like our service, tell your friends about it; if you don't like it, tell us about it.

Ellensburg, Wash.

How to Use the Dial Telephone



OBTAIN THE CORRECT NUMBER FROM THE DIRECTORY

Before making a call, make sure you have the correct number as listed in the current telephone directory. If the person, or firm is not listed, Dial "213" and ask "Information" for the number.

REMOVE THE RECEIVER

After you have made sure of the correct number to dial, remove the receiver from the hook. (If on a party line be sure the line is not busy.)

LISTEN FOR THE DIAL TONE

The "Dial Tone" is a steady "humming" sound which will be heard as soon as the equipment is ready for the call. DO NOT BEGIN TO DIAL BEFORE YOU HEAR THIS TONE.

WHAT TO DIAL

Dial each of the figures in the order in which they appear in the directory.

HOW TO DIAL

To dial any figure, place your finger firmly in the opening in the dial through which that figure appears.

Pull the dial around to the right until your finger strikes the stop. Then release the dial and allow it to return to rest without interference.

For example: Assume the number desired is 2-7001.

1. Remove the receiver from the hook and listen for the dial tone, which is a steady "humming" sound.

2. Place the finger in the opening in the dial through which the figure "2" is seen.

3. Keeping the receiver off the hook, turn the dial around to the right until your finger strikes the finger stop.

4. Withdraw your finger promptly from the dial and, without aiding or hindering, let the dial return to its original position. This is very important.

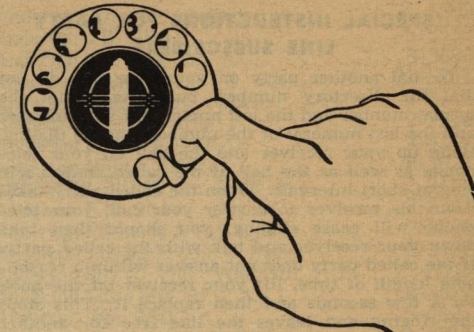
5. Proceed (as in steps "2," "3," and "4" above) in the same way with the figures 7001 in the order in which they appear.

6. If before dialing is completed, it is found that an error has been made, or if the finger slips from the opening while dialing, the receiver should be replaced. After a few seconds, remove the receiver and when "dial tone" is heard, dial the complete number.

EMERGENCY CALLS

If assistance is required in case of an emergency, dial "0" (operator), explain the situation, and she will assist you.

Ellensburg, Wash.



"RINGING" AND "BUSY" SIGNAL

Within a few seconds after you complete dialing, either the ringing signal or the busy signal should be heard.

The Ringing signal is an interrupted "burring" sound. Its purpose is to inform you that the bell of the called telephone is ringing. If, after hearing the signal repeated for a reasonable length of time, you obtain no answer, hang up your receiver and call again later.

The Busy signal is a rapid "buzz-buzz-buzz" sound and is heard when the line is in use. When you hear this signal, hang up your receiver and call again later.

REPLACE THE RECEIVER AFTER YOU HAVE FINISHED WITH A CALL

The dial service connection is controlled by the calling subscriber. The equipment is restored to normal when the calling subscriber hangs up the receiver. If a second call is desired, it can be made after the receiver has been hung up for a few seconds.

ANSWERING INCOMING CALLS

Incoming calls should be answered promptly as possible by announcing your number or name.

If no response is obtained upon answering a call and the dial tone is heard, it means that there is no one connected with your line, and that any connection which may have been established has been released, in which case you should hang up your receiver.

PARTY OR SINGLE LINE SUBSCRIBERS WITH ONE OR MORE EXTENSIONS

If two or more telephones are on the same line and the receiver is removed from any of the other telephones while a number is being dialed, it will interfere with the call and make it necessary for the person dialing to hang up and dial again.

After removing the receiver from the hook, always listen to make sure the line is not in use before attempting to dial.

If successive "clicks" are heard indicating that someone else on the line is dialing, wait until the dialing stops, then tell the person who is making the call that you have interfered with his dialing and replace the receiver.

If, after you start to make a call, you hear another person on the line remove the receiver, or hear successive "clicks" indicating that someone else on the line is dialing, tell the other person that the line is in use and request him to hang up. When he does so replace your receiver for a few seconds and dial the complete number again.

Information About Party Line Calls

SPECIAL INSTRUCTIONS FOR PARTY LINE SUBSCRIBERS

To dial another party on your own line do not dial the directory number, but instead dial the special number and the last numeral of your number and the last numeral of the number you are dialing. Hang up your receiver and the bell on your telephone as well as the bell at the called station will ring at short intervals. When the called party takes down his receiver to answer your call, your telephone will cease ringing; you should then take down your receiver and talk with the called party. If the called party does not answer within a reasonable length of time, lift your receiver off the hook for a few seconds and then replace it. This stops the ringing and leaves the line free for another connection.

FOR 5-9XXX, 5-0XXX, 8-XXXX PARTY LINE SUBSCRIBERS

The telephone numbers of the 10 parties on the same line are the same, excepting the last numeral.

To call another subscriber on your own line dial the special number 19 and the last numeral of your number and the last numeral of the number you are dialing. Example: 5-9171 calling 5-9178—dial 1918.

FOR ALL OTHER PARTY LINE SUBSCRIBERS

The telephone numbers of the 2 and 4 parties on the same line are the same excepting the last numeral. Numbers ending in 1 to 5 are on one line and to call another subscriber on this line dial 18 and the last numeral of your number and the last numeral of the number you are dialing. Example: 2-3161 dialing 2-3164—dial 1814. Numbers ending in 6 to 0 are on one line and to call another subscriber on this line dial 18 and the last numeral of your number and the last numeral of the number you are dialing. Example: 2-3166 dialing 2-3168—dial 1868. Four-party line numbers ending in 1 to 5 are not on the same lines with numbers ending in 6 to 0. Example: 2-3161 dialing 2-3160—dial 2-3160. On 10-party rural and Kittitas lines numbers ending in 1 to 0 are on the same line. Example: 2-3161 dialing 2-3160—dial 1910.

How to Transact Business With the Company

APPLICATIONS FOR NEW SERVICE CHANGES IN LOCATION DISCONTINUANCE OF SERVICE DIAL 2-1425

All matters relating to new telephone service, removals, termination of service, directory listings, adjustments of accounts, collection of bills, etc., are handled at the Business office of the Company.

Subscribers desiring telephone equipment rearranged or moved from one address to another or desiring telephone service discontinued either per-

manently or temporarily, should notify the Business office as far in advance as possible.

To arrange for any of these matters Dial 2-1425 which will connect you with the Business office.

CHANGES IN DIRECTORY LISTINGS

Notification as to new listings, changes or corrections should be made to the Business office at once.

Information About Out-of-Town Calls

OUT-OF-TOWN CALLS ARE OF TWO GENERAL CLASSES:

Decide if the lower priced "Station-to-Station" Service can be used or if "Person-to-Person" is necessary. The two classes of service are explained as follows:

Station-to-Station: A Station-to-Station call is one where you talk to anyone who answers the telephone number called. The rate is lower than on a call to a particular person. Station-to-Station rates are reduced between the hours of 6 P. M. and 4:30 A. M. during all days in the week, and similar reductions apply during all Sunday hours. Charges begin when the called number answers. They are completed more quickly than Person-to-Person calls and there is no report charge on a Station-to-Station call except on Collect Calls within the state when conversation does not take place the first time the distant station is reached.

If you know the distant telephone number, Dial "O" for "Long Distance" and give her the details of the distant telephone you desire connections with. Example: "I want Kansas City, Victor 4624."

If you do not know the distant telephone number,

call "Long Distance" and ask for connection with the residence or firm desired. Example: "I want John Smith's office at 4321 Michigan Avenue, Chicago."

Person-to-Person: A Person-to-Person call is one on which you talk to a particular person; the rate is higher than a Station-to-Station call. Between the hours of 6 P. M. and 4:30 A. M. each day in the week and during all Sunday hours, a lower rate than during other hours is effective.

To place a Person-to-Person call, Dial "O" for "Long Distance" and give her the details of your call. Example: "I want Mr. John Jones at the Lincoln Hotel, Springfield, Illinois."

A report charge is made on a Person-to-Person call within the state if the distant telephone is reached, the desired person is not available, and the call is not later completed.

Faster and better service may be obtained on your out-of-town calls if you know the distant telephone number you are calling and can furnish it to the operator when you place your call.

Long Distance Rates to Many Out-of-Town Points in the United States Are Listed on the Inside Front and Back Cover Pages.

Architects

Lambie Edla Muir
Member American Institute of Architects
203-A E 5th.....2-4456

Asphalt & Asphalt Products

AKINS DON INC 320 RR Av.....5-8301

Assayers

KELDON RESEARCH CORP
ASSAYS
URANIUM (24 Hour Service)
SPECTROGRAPHIC
COUNTERS & SCINTILLATORS
FREE INFORMATION
Write Box 2555 - Los Angeles 54 - Dept A
Telephone LUdlow 1-5335
Ask for Mr Thomas
2565 Belgrave Huntington Park Calif
Call Opr for.....LUdlow 1-5335

Associations**See Also Fraternal Organizations**

American Legion Club Vista House.....2-4051
American Red Cross Olympia Block.....2-3077
Chamber of Commerce Antlers Hotel bldg...2-1437
Ellensburg Chamber of Commerce
Industrial Director City Hall.....2-2971
Ellensburg Golf & Country Club
Golf Club RFD 1.....5-9572
Kittitas County Field & Stream Club
Bowers Field.....5-9065
Rodeo Headquarters Antlers Hotel Bldg...2-1438
Washington Cattleman's Association
Antlers Hotel Bldg.....2-4876
YMCA W 4th.....2-4636

Athletic Goods

See Sporting Goods—Retail

Attorneys

Brown E K Olympia Block.....2-6011
Cleman Lawrence 403 N Pearl.....2-4631
Cole W R Natl Bank of Com Bldg.....5-8226
Crimp Albert W 403 N Pearl.....2-4631
Davidson Philip A Olympia Block.....2-3266
Kern Dano & Cone
Dano-Overland Bldg 209 E 5th.....2-1491
Panattoni Joseph G 201½ E 5th.....21-6866
Short Spencer Natl Bank of Comm bldg...2-3561
Steenland Charles E Olympia Block.....2-7871

Auctioneers**ELLENSBURG SALES YARD****LIVESTOCK AUCTION**

Every Wednesday 1:00 P.M.

1 Mile E of Ellensburg on Vantage Hwy
Call.....2-2186
Ted Hanks Res.....2-7348
Art Driver Res.....2-7806
Vantage Hwy.....2-2186

Automobile Body Repairing

BUTTERFIELD CHEVROLET CO 5th & Main...2-1459

ELLENSBURG BODY & FENDER WORKS

COMPLETE
BODY & FENDER REPAIRING
AUTO PAINTING

Wheel Repairs - Glass - Seat Covers

410 N Main.....5-8271

Automobile Body Repairing

—(Cont'd)

HAAGEN FRANK A & SON 202 N Pine.....2-3786
KELLEHER'S BODY & FENDER SHOP
6th & Pearl.....2-6133

Automobile Courts—See Motels**Automobile Dealers—New Cars**

Butterfield Chevrolet Co 5th & Main.....2-1459

CADILLAC SALES & SERVICE

"STANDARD
OF THE
WORLD"



"WHERE TO BUY IT"

HAAGEN FRANK A & SON 202 N Pine...2-3786

**CHEVROLET AUTHORIZED SALES
AND SERVICE**

More people drive
Chevrolets than any
other car!
More value . . . that's why!



"WHERE TO BUY IT"

BUTTERFIELD CHEVROLET CO 5th & Main.2-1459
After Hours Call.....2-3298

CHRYSLER-PLYMOUTH—

SALES & SERVICE
RATHBUN IMPLEMENT COMPANY

3rd & Water.....2-1448

Ellensburg Motors 213 W 4th.....5-8551
(See Advertisement This Classification)
Faltus & Peterson DeSoto-Plymouth Agency
7th & Pearl.....2-1455
(See Advertisement This Classification)

FORD AUTHORIZED SALES & SERVICE

BRING YOUR
FORD
BACK HOME
FOR SERVICE



"WHERE TO BUY IT"

KELLEHER MOTOR CO 6th & Pearl.....2-1408

**FORD-MERCURY SALES & SERVICE—
KELLEHER MOTOR CO**

6th & Pearl.....2-1408

HAAGEN FRANK A & SON 202 N Pine.....2-3786
(See Advertisement This Classification)

**HUDSON AUTHORIZED SALES AND
SERVICE**

NEW HUDSON
AUTOMOBILES
AND
HUDSON'S
PROTECTIVE
SERVICE



"WHERE TO BUY THEM"

ELLENSBURG MOTORS 213 W 4th.....5-8551

Kelleher Motor Co 6th & Pearl.....2-1408
KELSO BUICK CO 110 W 3rd.....2-4026
(See Advertisement This Classification)
(Continued on Page 4)

**SALES and SERVICE**

CADILLAC

DIAL

2-3786

Brillion Sure Stand Seeders
Freeman Twin Tie Balers
Gould Water Systems
Atlas Power Tools
Farmer's Hardware
Toro Lawn Mowers



GMC TRUCKS

DIAL

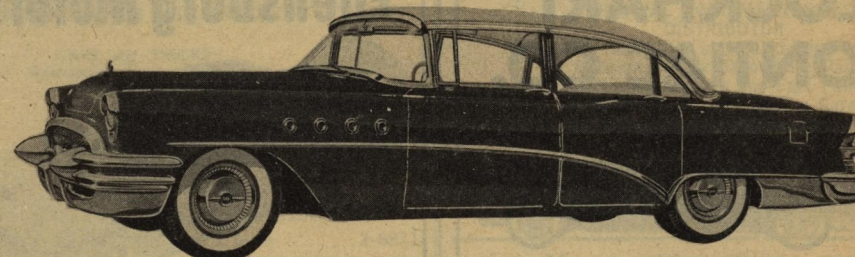
2-3786

Complete Shop Repair Service

FRANK A. HAAGEN & SON

202 N. Pine — Call Us Up - Not Down — Ellensburg

"BEST BET'S BUICK"

**COMPLETE AUTO SERVICE**

PARTS — ACCESSORIES

SAFETY—SCOPED
USED CARS



CALL 2-4026

KELSO BUICK CO.

110 W. 3rd

ELLENSBURG



Sales and Service

Complete Auto Service
Union Gas and Motor Oil
Goodrich Tires and Batteries
Skilled Workmanship
Genuine Parts

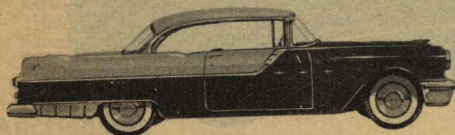
After Hours Emergency Calls
and Wrecker Service

5-0581

FALTUS & PETERSON
DeSoto-Plymouth Agency

7th and Pearl **2-1455**

LOCKHART PONTIAC CO.



"WITH THE 180 HP
STRATO-STREAK V-8"

COMPLETE REPAIR SERVICE

- Motor Tune-ups
- Major Overhauls
- Electrical Service

TIRES-TUBES-BATTERIES
ACCESSORIES

DIAL 5-8251

3rd & Pine

Ellensburg

Automobile Dealers-New Cars -(Cont'd)

Lockhart Pontiac Co 3rd & Pine.....5-8251
(See Advertisement This Classification)

Major & Thomas Oldsmobile 207 N Pearl....2-2501

MERCURY SALES AND SERVICE

Fully trained sales and service
personnel, plus the newest fac-
tory-approved equipment for your
convenience and satisfaction.



"WHERE TO BUY THEM"

KELLEHER MOTOR CO 6th & Pearl.....2-1408

NASH SALES AND SERVICE

- AMBASSADOR
- STATESMAN
- RAMBLER
- METROPOLITAN

"DEALERS READY TO SERVE YOU"

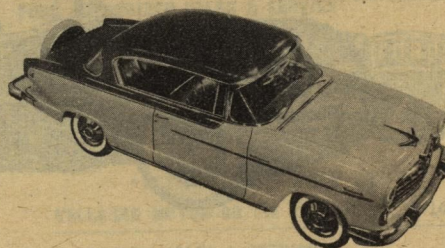
"FOR INFORMATION CALL"

POYNTER MOTORS 512 N Pearl.....2-3618

(Continued Next Page)

Representing every
business, service and product—
your Classified
Telephone Directory!

Ellensburg Motors



RAMBLER - WASP - HORNET

Drive America's Smartest Car
for Town and Travel



**DIAL
5-8551**

SALES and SERVICE

213 W. 4th

ELLENSBURG

"TELLS WHERE TO BUY IT"

Automobile Dealers-New Cars -(Cont'd)

OLDSMOBILE

ROCKET!

HYDRA-MATIC!

OLDSMOBILE

HAS BOTH!

"WHERE TO CALL"

MAJOR & THOMAS OLDSMOBILE
207 N Pearl.....2-2501

PACKARD AUTHORIZED SALES & SERVICE

ASK
THE MAN
WHO
OWNS ONE



"WHERE TO BUY IT"

RICE REX MOTORS 6th & Main.....2-6811

PONTIAC SALES AND SERVICE

Protect your Pontiac with Pontiac
service—your best assurance of
factory-trained mechanics, factory-
engineered parts and factory-devel-
oped tools.



"FOR SERVICE CALL"

LOCKHART PONTIAC CO 3rd & Pine....5-8251

POYNTER MOTORS 512 N Pearl.....2-3618

Rice Rex Motors 6th & Main.....2-6811

RUTLEDGE MOTOR CO 801 S Pearl.....5-5388

(See Advertisement This Classification)

STUDEBAKER SALES AND SERVICE

CARS and TRUCKS
of Outstanding Style, Performance
and Economy

Expert car and truck
service for Studebaker
and other makes



"WHERE TO CALL"

AUTHORIZED SALES & SERVICE

RICE REX MOTORS 6th & Main.....2-6811

WILLYS SALES & SERVICE—

HAAGEN FRANK A & SON

202 N Pine2-3786

Automobile Dealers-Used Cars

Butterfield Chevrolet Used Car Lot

413 N Main.....21-6316

Kelleher's Used Car Lot 6th & Pearl.....2-6186

KELSO BUICK CO 110 W 3rd.....2-4026

MAJOR & THOMAS OLDSMOBILE 207 N Pearl.2-2501

OK USED CARS

Sold Only By
AUTHORIZED CHEVROLET
DEALERS

OK Used Cars and Trucks
Warranted in Writing



"WHERE TO BUY THEM"

BUTTERFIELD CHEVROLET USED CAR LOT
413 N Main.....21-6316

Automobile Electrical Service

AUTO-LITE OFFICIAL SALES & SERVICE

Our Official Service Stations
are fully equipped and qualified
to render complete service on
starting, lighting, ignition. "Auto-
Lite—Life-Line of your Car."



"WHERE TO BUY IT"

CENTRAL PARTS 108 S Main.....5-5333

Heinrich Auto Electric 405 N Main.....2-3176

SETH & KLAMPHOR AUTO SERVICE

Main & Capital.....2-4178

Automobile Fenders-Repairing

See Automobile Body Repairing

Automobile Glass

See Glass-Auto, Plate, Window, Etc.

Automobile Loans-See Loans

Automobile Painting

ELLENSBURG BODY & FENDER WORKS

410 N Main.....5-8271

Automobile Parts & Supplies-Retail

ELLENSBURG AUTO PARTS 212 N Pearl....2-3671

Nites Sundays & Holidays call.....21-6902

HEINRICH AUTO ELECTRIC

Wholesale & Retail

405 N Main.....2-3176

TRIANGLE AUTO SUPPLY CO 100 N Main....2-4426

Woods' Auto Supply 407 N Pearl.....2-2961

Automobile Parts & Supplies-Wholesale & Mfrs

CENTRAL PARTS

ORIGINAL EQUIPMENT PARTS
DISTRIBUTOR

Auto-Lite and Delco-Remy
Duco and Dulux Automotive Paints
Carter Carburetors and Fuel Pumps
Everything for the Dealer - Garage
and Service Station

108 S Main.....5-5333

ELLENSBURG AUTO PARTS 212 N Pearl....2-3671

TRIANGLE AUTO SUPPLY CO 100 N Main....2-4426

Memory Plays Tricks with
Telephone Numbers.



DODGE • PLYMOUTH

JOB-RATED
TRUCKS

5-5388

1ST CHOICE USED CARS & TRUCKS
COMPLETE AUTOMOTIVE SERVICE
24 HOUR WRECKER SERVICE

AFTER HOURS EMERGENCY AND
WRECKER SERVICE...2-7455

RUTLEDGE MOTOR CO.

801 S. PEARL

Automobile Radiator Repairing

HEINRICH AUTO ELECTRIC 405 N Main.....2-3176
 KELSO BUICK CO 110 W 3rd.....2-4026
 WINDMILL SERVICE STATION &
 RADIATOR SHOP Main & Capital.....2-4176
 (See Advertisement This Classification)

Automobile Rental**VERN'S FLYING A SERVICE**

See Our Ad Under Trucks-Motor-Renting
 8th & Main.....5-5444

Automobile Repairing & Service**BIG STAR SERVICE**

COMPLETE REPAIR SERVICE
 MOTOR OVERHAUL and TUNE-UP
 BRAKE SPECIALISTS

Kenny Cross

500 S Main.....2-7761

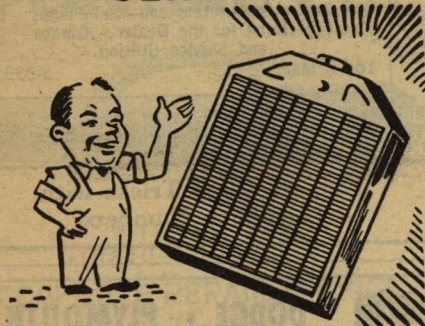
ANSWER PROMPTLY

SPEAK CLEARLY

HANG UP GENTLY

THREE FRIENDLY

TELEPHONE HABITS

RADIATOR SERVICE

- STEAM CLEANING
- REPAIRING
- RECORING

CAR - TRUCK - TRACTOR

CALL 2-4176

WINDMILL SERVICE STATION & RADIATOR SHOP

Main & Capital - On U.S. Highway 97
 ELLENSBURG

Automobile Repairing & Service

-(Cont'd)

CHEVROLET AUTHORIZED SERVICE

Prompt efficient service by
 Chevrolet trained mechanics
 to keep your car in top
 operating condition!

**"FOR SERVICE CALL"****BUTTERFIELD CHEVROLET CO**

5th & Main.....2-1459
 After Hours Call.....21-6196

**CLARK'S SERVICE Seattle Hwy
FIRST & LAST CHANCE SERVICE**

Spokane Hwy.....2-2391
KELLEHER MOTOR CO 6th & Pearl.....2-1408
KELSO BUICK CO 110 W 3rd.....2-4026
LOCKHART PONTIAC CO 3rd & Pine.....5-8251
LYNCH MOTOR SERVICE 604 W 8th.....2-6666
MAJOR & THOMAS OLDSMOBILE 207 N Pearl.....2-2501
 Motor Inn Garage Kittitas.....8-3341
OLSEN'S SERVICE Cascade Wy.....2-2811
POYNTER MOTORS 512 N Pearl.....2-3618
SERVICE CENTER EARL WIPPEL 101 S Main.....2-2926

SETH & KLAMPHER AUTO SERVICE**ONE STOP AUTO SERVICE**

General Repair - Motor Rebuilding
 MOTOR TUNE-UP
 Wheel Alignment & Balancing

Main & Capital.....2-4178

UNION OIL AUTHORIZED REPAIR SERVICE

Use Your
 UNION OIL CREDIT CARD
 for Motor Maintenance
 and Repairs at new
 car dealers displaying
 this sign.

**"FOR SERVICE CALL"**

Faltus & Peterson DeSoto-Plymouth
 Agency 7th & Pearl.....2-1455
 Haagen Frank A & Son
 Cadillac
 202 N Pine.....2-3786
 Kelleher Motor Co
 Ford-Mercury
 6th & Pearl.....2-1408
 Kelso Buick Co 110 W 3rd.....2-4026
 Major & Thomas Oldsmobile
 207 N Pearl.....2-2501
 Motor Inn Garage
 Ford
 Kittitas.....8-3341
 Poynter Motors
 Nash
 512 N Pearl.....2-3618
 Rutledge Motor Co
 Dodge-Plymouth
 801 S Pearl.....5-5288

Automobile Seat Covers-Retail

Ellensburg Body & Fender Works
 410 N Main.....5-8271
 M & M Upholstery 5th & Dollarway.....2-7736
 Triangle Auto Supply Co 100 N Main.....2-4426

The Oldest Telephone Tradition Is
SERVICE.

"TELLS WHERE TO BUY IT"**Automobile Towing****BARNEY'S RICHFIELD STATION**

Western Motor Association Inc
 308 W 8th.....21-6006

BUTTERFIELD CHEVROLET CO 5th & Main.....2-1459
 After Hours Call.....21-6196

CLARK'S SERVICE Seattle Hwy.....5-9828
CLOCK GARAGE THE RFD 3.....8-3041

(See Advertisement This Classification)

FALTUS & PETERSON

DESOTO-PLYMOUTH AGENCY 7th & Pearl.....2-1455
 Nites & Holidays Call.....5-0581

KELLEHER MOTOR CO 6th & Pearl.....2-1408
 After Hours and Holidays.....2-3824

RAY'S SERVICE STATION Thorp.....5-9658
RUTLEDGE MOTOR CO 801 S Pearl.....5-5388
 After Hours Call.....2-7455

**WINDMILL SERVICE STATION &
RADIATOR SHOP****TOWING
LOADING SERVICE**

MEMBER of WMA & UMC
 Auto Parts & Electrical Service
 After Hours Call 2-3542 or 2-6497

Main & Capital.....2-4176

Automobile Upholsterers

Ellensburg Body & Fender Works
 410 N Main.....5-8271

M & M UPHOLSTERY

COMPLETE AUTO UPHOLSTERING
 1st Quality Artificial Leathers
 & Body Cloths
 CUSTOM TAILORED CONVERTIBLE TOPS
 & PLASTIC WINDOWS
 Truck Cushions Rebuilt & Recovered
 August A McNall
 5th & Dollarway.....2-7736

Automobile Washing & Polishing

Vaughan's Union Service 3rd & Main.....5-5416

Automobile Wreckers

TRIANGLE AUTO SUPPLY CO 100 N Main.....2-4426

Awnings**YAKIMA TENT & AWNING CO**

AWNINGS
 THE COMPLETE CANVAS
 AND
 AWNING CENTER

205 W Yakima Av Yakima
 Call Opr for.....Yakima-6169

Baby Attendant Service

Baby Sitters (PTA Instructed)
 Watt Harold Mrs.....2-4804
 YMCA.....2-4636

Bags-Leather

See Leather Goods-Retail

Bakers-Retail

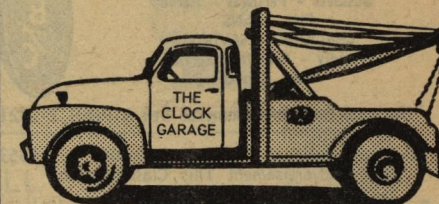
Model Bakery 115 E 4th.....2-6926

Baling Equipment**FREEMAN TWIN TIE BALERS—**

HAAGEN FRANK A & SON
 202 N Pine.....2-3786

Towing

DAY or NIGHT



**CALL
8-3041**



GENERAL
 AUTO REPAIR & SERVICE

**THE CLOCK GARAGE
TOWING & REPAIR SERVICE**

TOMMIE RITTER

On Hwy. 10-7 Mi. East of Ellensburg

TWO

FRIENDLY TELEPHONE

HABITS

QUICK to answer when your bell rings.

SLOW to hang up when you call some-
 one who does not immediately respond.

In calling others, remember that the
 person called may be almost there —
 so wait a few seconds.

Banks

National Bank of Commerce 5th & Pearl...2-1421

NATIONAL BANK OF COMMERCE**BANK LOANS**All Purpose - Attractive Rates
Business - Personal - Home**FHA LOANS**CHECKING - SAVINGS
Friendly - Complete Service
Trust Service

National Bank of Commerce 5th & Pearl. 2-1421

Washington National Bank 4th & Pearl... 5-5353
(See Advertisement This Classification)**Bar Equipment & Supplies**

See Restaurant Equipment & Supplies

Barbers

Castor's Barber Shop 107 W 3rd.....2-6548

Nifty Barber Shop 315 N Main.....5-8393

Tip Top Barber Shop 200 W 4th.....21-6557

WALLBRIDGE JAMES E

HAIRCUTTING

"YOUR WAY"

SAW SHARPENING

310½ N Pine2-7596

Long Distance telephone service
gets there fastest.**Washington National Bank**

Two Banks To Serve You

A
HOME OWNED
BANKMAIN BANK
4th & PEARL2% PAID ON
ALL SAVINGS**DIAL**
5-5353OUR DRIVE IN BRANCH
3rd & PINE**DIAL**
5-5353FOR ADDED CONVENIENCE
USE OUR DRIVE-IN BRANCH

4th & PEARL

ELLENSBURG

BathsYakima Mineral Baths 810 E Yakima Av
Yakima Call Opr for.....Yakima-3-6162**Batteries—Retail****DELCO BATTERIES SALES & SERVICE—**
WINDMILL SERVICE STATION &
RADIATOR SHOP

Main & Capital.....2-4176

O K Rubber Welders 100 E Capital.....5-8156

PINNEY & STORMS MOBIL SERVICE
117 E 8th.....2-6556**Beauty Shops****BAND BOX BEAUTY SHOP** 203 E 5th.....2-2176
(See Advertisement This Classification)Churchill Elizabeth Ann Beauty Shop
408½ N Pearl.....2-3321**EMPRESS BEAUTY SALON THE**
Elton Hotel Bldg.....2-3646

(See Advertisement This Classification)

Hi-Way Beauty Shop Cascade Wy.....2-7901

Lucille's Beauty Salon Olympia Block.....2-6636

SUN-RAY BEAUTY SALON 421 N Pearl.....2-3201**Beer & Ale Distrs****ELLENSBURG DISTRIBUTORS INC**

Rainier-Bohemian-Miller High Life

St Charles Wines

RFD 1.....2-1484

NATIONAL GROCERY CO

Lang & Co

Distributors for Olympia Beer

5th & Kittitas.....2-4201

Beer Taverns**B & B TAVERN** Kittitas.....8-3861**BILL'S TAVERN** Kittitas.....8-3466

Ellensburg Beverage Parlor 300 N Main.....5-5466

Hitching Post Tavern

Warren Kidder

816 W 8th.....2-3016

MAVERS TAVERN 3rd & Pearl.....2-4516**MAVERS TAVERN** 3rd & Pearl.....5-5456

T & E Tavern Thorp.....5-9653

Tavern The 117 W 4th.....5-5445

Beverages—Non-Alcoholic**SQUIRT—****SODY-LICIOUS BEVERAGE CO**

202 N Anderson.....2-3571

Bicycles—Repairing**BOB'S SPORTING GOODS** 117 E 4th.....2-3626**Billiard Parlors**

Hi-Line Pool Hall 111 W 4th.....5-5415

T & E Tavern Thorp.....5-9653

Bird Supplies—See Pet Supplies**Blacksmiths**

Busby A C & Son 419 N Main.....5-8656

Klampher Mike 1310 N Walnut.....2-7476

Valley Repair Shop Kittitas.....8-4241

Book Dealers

Graham John W Co

Ellensburg Book & Stationery

419 N Pearl.....2-3816

Bookkeeping Service

Boyd-Olofson Co Dano-Overland Bldg.....5-5321

Ramey's Bookkeeping Service 215 E 4th.....2-3906

Robbins Vivian RFD 1.....5-9892

**Empress BEAUTY SALON**

BILL & DOROTHY EVANS, Owners

"BEAUTY AT ITS BEST"

Telephone 2-3646

Located in Lobby of Elton Hotel

4th & Pearl

Ellensburg

BAND BOX BEAUTY SHOP**DIAL**
2-2176

- Complete Service
- Relaxing Facials

- Newest Hair Styles
- Body Massage

• Friendly Atmosphere

GROUND FLOOR - PARKING SPACE
JUST EAST OF THE LIBERTY THEATRE

203 E. 5th

ELLENSBURG

Bottlers

Pepsi-Cola Bottling Co
Pepsi-Cola, Nesbitt-Hires-Canada Dry
1001 S 1st Yakima
Call Opr forYakima-6000
Sody-Licious Beverage Co 202 N Anderson..2-3571

Bowling Alleys

Crystal Gardens 508 N Pearl.....5-5414

Brake Service

First & Last Chance Service Spokane Hwy..2-2391

Bric-A-Brac—See Chinaware—Retail**Brick—Common, Face, Etc.**

ELLENSBURG LUMBER COMPANY
109 N Kittitas.....2-1443

Briefcases—See Leather Goods—Retail**Brokers—Stock & Bond**

HOGLE J A & CO
W 523 Sprague Spokane
Call Opr for.....MAdison 3381

Brushes

HELEN'S SUPPLY CO
HOUSEHOLD CLEANERS
WAXES - POLISHES
DUST MOPS - WET MOPS
ALL TYPES PERSONAL &
INDUSTRIAL BRUSHES
611 W 11th.....21-6306

Building Cleaning Supplies

See Janitor's Supplies

Building Materials

Ellensburg Cement Products Inc Ofc W 7th.5-8671

ELLENSBURG LUMBER COMPANY
LUMBER - HARDWARE
ROOFING - SASH & DOORS
PLYWOOD - WALL BOARD
BRICKS & CEMENT
109 N Kittitas2-1443

Gumeson Block Co Kittitas.....8-3331
Knudson Carl Mill & Lumber Yard RFD 2...2-6276

PHARE BUILDING SUPPLY

"Everything for the Builder"

HARDWARE - WALLBOARD
VENEER - FINISH LUMBER
SASH & DOORS - FLOOR COVERING
FULLER PAINTS

S Main2-7651

PROGRESSIVE BUILDERS INC 206 N Kittitas.2-3186
TUM-A-LUM LUMBER CO 601 W 5th.....2-4851
WASHINGTON CONSTRUCTION CO
706 N Sprague.....2-4166

Reach—Don't run.
Get a Low-Cost
Extension Telephone.

Bus Lines**NORTHWEST GREYHOUND LINES**

Frequent bus service to Seattle,
Vancouver, B. C., Portland, Spo-
kane, Wenatchee, Walla Walla,
Missoula, Butte and way points.
Greyhound service to California,
Canada and all the East.



"FOR INFORMATION CALL"

GREYHOUND BUS TERMINAL 5th & Pine..2-1467

Cabinet Makers

Bill's Build It
See Our Ad Under Upholsterers
1006 E Capital.....21-6611

HARKER BERNARD A

GENERAL CARPENTRY

CABINET MAKING

CALL B. A. HARKER

412 W 12th.....2-4377

Knudson Carl Mill & Lumber Yard RFD 2..2-6276
PROGRESSIVE BUILDERS INC 206 N Kittitas..2-3186
Standley Jasper N Cabinet Shop E 13th...5-8497

Cameras & Camera Supplies

See Photographic Equipment & Supplies Hdgs

Canners

Pictsweet Foods Inc
Freezing Division W 5th.....2-2116
Seed Department 12th & D.....2-7551
Timekeepers Office Freezing Div.....2-6246

Carpets—See Rugs & Carpets—Retail**Cement Blocks**

See Concrete Blocks & Shapes

Certified Public Accountants

See Accountants—Certified Public

Cesspool Building & Service

Brown & Jackson Main & Capital.....2-4176

Children's & Infants' Garments—Retail

Tot Togs & Youth Shop 415 N Pearl.....2-3231

Chimney Cleaners

WAMPOLE FRED RFD 3.....8-3444

Chinaware—Retail

Button Jewelers 119 E 4th.....5-8106

Chiropractors

Weinberg & Stephenson
Foot Specialists
Larson Bldg Yakima
Call Opr for.....Yakima 6485

Chiropractors

Hoke S A Jr Ramsay bldg.....2-3436
LYONS R V
Ofc 701 E Tacoma.....2-3361
PASA T 701 E Tacoma.....2-3361

"TELLS WHERE TO BUY IT"**Church Organizations**

Methodist Church Camp
RFD 1 Lazy F Ranch.....5-9887

Church Supplies

Dick's Pet & Garden Center 2nd & Pine...2-2756

Churches

Assembly of God Parsonage 711 Douglas...2-7582
Baptist Parsonage
Rev Dan J Rueb
306 N Sprague.....2-7671
Christian Church 6th & Ruby.....5-8186
Rev Fred L Towne 901 E 1st.....5-8188
Christian & Missionary Alliance 104 N Ruby.5-8951
Church of God 403 S Ruby.....2-7502
Church of Jesus Christ of Latter Day Saints
Anderson & Manitoba.....2-2308
Church of the Nazarene 205 E Capital.....2-2098
Grace Episcopal Church 305 E 4th.....2-7556
Lutheran Church First
Rev Silas E Erickson
302 E 6th.....2-7266
Methodist Church 3rd & Ruby.....5-5396
Presbyterian Church 404 N Sprague.....2-2603
Rev Laurence M Arksey.....2-2601
St Andrews Catholic Church Rectory
702 N Pine.....5-8816

Cigars & Tobacco—Retail

Club Cigar Store 316 N Pearl.....5-5400
Horseshoe Cigar Store 106 W 3rd.....2-4701

Circular Letters

See Letter & Addressing Service

City Offices

See Alphabetical Section under "Ellensburg
City of" also "Kittitas Town of"

Cleaners & Dyers

Hollywood Cleaners 109 W 5th.....2-6401
Hollywood Drive In 504 E 8th.....2-4222
K E Cleaners 204 E 6th.....2-3141
(See Advertisement This Classification)
MODEL LAUNDRY & CLEANERS INC
207 N Pine.....2-6266

SERVICE CLEANERS

DRIVE IN ACROSS FROM

LIBERTY THEATRE

1 Day Cleaning Service

201 E 5th.....2-7896

Superior Cleaners 506 N Pearl.....2-2746

Cleaning Compounds

Helen's Supply Co 611 West 11th.....21-6306

Clinics

Taylor-Richardson Clinic 6th & Pine.....2-1461
Valley Clinic 301 E 4th.....2-1451

Clothing—Men's, Retail

Farrell's Clothing 405 N Pearl.....2-3078
Moser's Clothing Store 4th & Pearl.....2-6066
Ross Brothers (Hub Clothiers)
307 N Pearl.....5-8201

Coal & Coke Dealers—Retail

C & H FUEL AND TRANSFER
W 5th & NP Tracks.....5-8316
(See Advertisement This Classification)
TUM-A-LUM LUMBER CO 601 W 5th.....2-4851
VALLEY FUEL & TRANSFER 401 W 4th.....5-8826
(See Advertisement This Classification)

K.E. CLEANERS

PERSONALIZED
SERVICE

Where Quality
Is
Not Expensive

Ellensburg 2-3141

NEXT TO CLINIC ON 6th



For Quick Delivery Dial 5-8316

"The Coal We Sell —
Sells Our Coal"

CASTLEGATE
UTAH COALS
ROSLYN COALS — All Sizes

C & H FUEL & TRANSFER

Yard and Office — W. 5th and N. P.
Tracks



DIAL 2-5826

•COAL
•GASCO BRIQUETS
•COMBUSTIONEER STOKERS
SALES & SERVICE

VALLEY FUEL & TRANSFER

401 W. 4th

ELLENSBURG

Cocktail Lounges

WEBSTER'S SMOKE HOUSE 317 N Pearl...5-5455

Cold Storage Lockers—Renting

See Frozen Food Lockers—Renting

Collection AgenciesEllensburg Business Men's Assn...5-8556
Col Dept RFD 3...2-1469
ELLENSBURG CREDIT BUREAU 402 N Pearl...2-1469**Colleges—See Schools****Commercial Spraying—See Spraying****Commission Merchants**Pacific Fruit & Produce Co 5th & Wenas...2-1404
Thrall Ofc...2-6101

Next time you want to make a call but aren't quite sure of the number, look it up in the latest Telephone Directory; Memory isn't always reliable — and you'll save time by looking up the RIGHT number before you call!

CLASSIFIED TELEPHONE DIRECTORY**Concrete Blocks & Shapes**ELLENSBURG CEMENT PRODUCTS INC ofc
W 7th...5-8671**Concrete Products**ELLENSBURG CEMENT PRODUCTS INC ofc
W 7th...5-8671**Concrete—Ready Mixed**ELLENSBURG CEMENT PRODUCTS INC ofc
W 7th...5-8671**Confectioners—Retail**

Allen's 409 N Pine...2-6316

SNACK SHOP THE**FOUNTAIN & LUNCHES****ICE CREAM**

Hours: 9:30 AM to 8:00 PM

Crushed Ice

All Types Beverage Mixers

Cigarettes

107 E 3rd...2-2346

Confectioners—Whse & Mfrs

Belch H E Inc 318 N Main...2-6831

Contractors—BuildingCherf Bros & Sandkay Co...5-5314
Kittitas County Court House...2-3121
Jones George V 10th & A...2-3121

(Continued Next Page)



TELEPHONE

2-3186

PROGRESSIVE BUILDERS, INC.*"Progressive Built Is Better Built"*

206 N. KITTITAS

P. O. BOX 89

COMPLETE Building SERVICE

- COMMERCIAL
 - RESIDENTIAL
- General Contracting

Cabinet and Fixture Work
Specialty Building Materials**"TELLS WHERE TO BUY IT"****Contractors—Building—(Cont'd)**Knudson Carl Mill & Lumber Yard RFD 2...2-6276
(See Advertisement This Classification)
Progressive Builders Inc 206 N Kittitas...2-3186
(See Advertisement This Classification)**Contractors—Ditching**

Hank The Plumber 502 N Pine...2-3156

Contractors—ExcavatingAKINS DON INC 320 RR Av...5-8301
ELLENSBURG CEMENT PRODUCTS INC ofc
W 7th...5-8671**Contractors—General**AKINS DON INC 320 RR Av...5-8301
Gault Robert L E Capital Av...21-6818
Ketner Brothers Inc 707 East 11th...2-3308
Oneal C E 209 N Elliott...5-8911**Contractors—Heating & Ventilating**

Lockwood Plumbing & Heating 105 E 5th...2-6606

Contractors—MasonryKitts Marvin
You Specify—We Build
303 W 8th...2-2112**Contractors—Paving**

AKINS DON INC 320 RR Av...5-8301

Contractors—Roofing—See Roofers**Corsets—Retail**HARRIS LOTTIE
Individually Designed
SPENCER SUPPORTS
Designed For Women, Children & Men
Doctors Prescriptions Filled
Improve Appearance and Health
By Improving Posture
409 N Ruby...2-7212**County Offices**See Alphabetical Section under
"Kittitas County of"**Crankshaft Grinding**

Ellensburg Auto Parts 212 N Pearl...2-3671

Creameries—See Milk & Milk Products**Credit Reporting Agencies**

ELLENSBURG CREDIT BUREAU 402 N Pearl...2-1469

Cylinder Reboring & Regrinding

Ellensburg Auto Parts 212 N Pearl...2-3671

Dairies & Dairy Products

See Milk & Milk Products

Dairy Equipment & Supplies**SURGE SALES & SERVICE**SCHWEITZER & ZERO T-20
BULK FARM TANKS
SURGE PARLORS
PAIL & PIPELINE MILKERS
"C" Boyce Before You Buy
10 Vista Rd...21-6551**Dancing Schools**

Vic's Accordion School 502 E 6th...2-7862

Delivery Service

ELLENSBURG TRANSFER CO 407 W 4th...5-8401

Dental Laboratories

Charlton Dental Laboratory 315 N Sprague...5-8131

DentistsHooper William R 315 N Sprague...5-8131
Jeske Ernest W J 315 N Sprague...2-2471
Residence...2-2327**JOHNSON ORLANDO J**We Specialize in
DENTURES - EXTRACTIONS
X-RAYS

Easy Credit Terms

Partial Dentures - Removable Bridges

10 N 2nd Yakima

Call Opr for...Yakima 2-8931

Residence...Yakima 2-4832

Lukens E M

Practice Limited to Children

315 N Sprague...2-2471

Residence...2-7817

Mundy J H 206 E 4th...2-6321

Residence...2-4953

Pearl Wm E 215 E 4th...2-7666

Thompson Robert L Arcade Bldg...2-7756

Uebelacker Wm 420 N Pine...2-4301

Weaver Keith 315 N Sprague...5-8131

Weaver R A Ramsay Bldg...2-4721

Department Stores

Morgan's Dept Store 409 N Pearl...2-6771

Penney J C Co 120 E 4th...5-8466

SEARS ROEBUCK & CO CATALOG SALES OFFICE

Sales & Service

107 E 4th...2-1441

Emergency Repair Service Call...21-6162

Western Auto Supply 314 N Pine...2-3726

Detective Agencies**ALERT DETECTIVE AGENCY**

Sloan Bldg Yakima

Call Opr for...Yakima 5723

Ask about our Low-Cost

Extension Service.

Call our

business office.

ALL PURPOSE
BUILDINGS
AT
LOWER COST**CONTRACTING**New Construction & Remodeling
of All Types Buildings

Call 2-6276

KNUDSON MILL & LUMBER
R.F.D. 2 ELLensburg

Dictating Machines**DICTAPHONE DICTATING MACHINES**

"GREATEST NAME
IN DICTATION"
featuring
the revolutionary



TIME-MASTER — dictating machine
TELECORD — dictation network
IT'S SAID — AND DONE

"WHERE TO BUY IT"

PINNELL OFFICE MACHINES

505 W Yakima Av
Call Opr for Yakima-5130

Directories**TELEPHONE DIRECTORY ADVERTISING SERVICE**

GUARANTEED CIRCULATION
OF SELECTED PROSPECTS
FOR BUSINESS OR
PROFESSION

The "Yellow Pages" Tell
"Where To Buy It"



"FOR INFORMATION CALL"

ELLENSBURG TELEPHONE CO 305 N Ruby. 2-1425

Dishwashing Machines**GENERAL ELECTRIC DISHWASHING MACHINES**

ELECTRIC SUPPLY
111 E 4th..... 2-3066

Dog Supplies—See Pet Supplies**Doors****CRAWFORD DOOR SALES—**

CRAWFORD DOOR SALES
2402 Fruitvale Yakima
Call Opr for..... Yakima-7858

CRAWFORD DOOR SALES

GARAGE DOORS
Upward Acting
Residence Garages - Service Stations
Warehouses
Power Operated if Desired

2402 Fruitvale Yakima
Call Opr for..... Yakima-7858

Knudson Carl Mill & Lumber Yard RFD 2... 2-6276

Draperies—Retail

BROTHERTON FURNITURE CO 109 E 3rd..... 2-6126
FITTERER BROS 4th & Main..... 2-6411

Druggists—Retail

Bostic's Drug Store 4th & Pearl..... 2-6261
Cahill Pharmacy Kittitas..... 8-3456
NICHOLSON DRUG STORE 315 N Pearl..... 2-2261
OSTRANDER'S DRUG 401 N Pearl..... 2-1419
Service Drug Store 410 N Pearl..... 2-6016

Dryers—Clothes**GENERAL ELECTRIC DRYERS—**

ELECTRIC SUPPLY
111 E 4th 2-3066

WESTINGHOUSE—

SALES & SERVICE
MORGAN APPLIANCE & TV CENTER
306 N Pine..... 2-2370

CLASSIFIED TELEPHONE DIRECTORY**Eggs—Retail**

Gould Harry R Poultry 1305 N Chestnut.... 2-3899

Eggs—Whse

Washington Cooperative Farmers Association
401 Wenas 2-1435

Electric Appliances—Household, Repairing

Bill's Radio & Appliance Service
311 N Pearl 2-7371
ELECTRIC SUPPLY 111 E 4th..... 2-3066

Electric Appliances—Household Retail

ADMIRAL APPLIANCES—
BILL'S RADIO & APPLIANCE
SERVICE
311 N Pearl..... 2-7371

BROTHERTON FURNITURE CO 109 E 3rd. 2-6126
ELECTRIC SUPPLY 111 E 4th..... 2-3066

FRIGIDAIRE APPLIANCES

New Cyclo-matic Frigidaires
with famous Meter-Miser.
Also Frigidaire electric
ranges, food freezers, water
heaters, automatic washers,
dryers, ironers, dehumidi-
fiers, and room air condi-
tioners.



"WHERE TO CALL"

MAPES APPLIANCE 408 N Pearl..... 2-7111

GENERAL ELECTRIC HOME APPLIANCES

REFRIGERATORS - RANGES
WATER HEATERS
HOME FREEZERS - WASHERS
CLOTHES DRYERS
DISH WASHERS - DISPOSALS



"WHERE TO CALL"

ELECTRIC SUPPLY 111 E 4th..... 2-3066

Hiatt's Appliance Store 313 N Pearl..... 2-4766

KELVINATOR

Complete line of Electric
Refrigerators, Electric
Ranges, Home Freezers,
Electric Water Heaters, Room Air Conditioners, Dehu-
midifiers, Garbage Disposers and Laundry Equipment.



"WHERE TO BUY THEM"

ELLENSBURG HARDWARE 411 N Pearl.. 2-6756

Mapes Appliance 408 N Pearl..... 2-7111
WESTINGHOUSE—

SALES & SERVICE
MORGAN APPLIANCE & TV CENTER
306 N Pine..... 2-2370

WESTINGHOUSE PRODUCTS

Refrigerators, Freezers,
Ranges, Dishwashers, Water
Heaters, Clothes Dryers,
Laundromats, Vacuum Clean-
ers, Waste-Aways, Electric
Bedcoverings, Fans, Table
Appliances.

You Can Be SURE
If It's WESTINGHOUSE.

"WHERE TO CALL"

HIATT'S APPLIANCE STORE 313 N Pearl. 2-4766

**"TELLS WHERE TO BUY IT"****Electric Contractors****BERKEY-WHITING ELECTRIC**

Contracting - Repairing
Commercial & Residential Wiring
Electric Heating Headquarters
WESIX WIRED HEAT

5th & Kittitas..... 2-2421
If no answer call 21-6527

Electric Supply 111 E 4th..... 2-3066

(See Advertisement This Classification)

FISCHER ELECTRIC 400 S Main..... 5-8901
(See Advertisement This Classification)

MINDER ELECTRIC CO**LICENSED ELECTRICAL WORK**

House Wiring
Electric Motor Repairing
Electric Space Heating
Electrical Repairing

Telephone Day or Night
402 N Anderson 2-6457

Electric Light & Power Companies

Bonneville Power Administration
Substation Site Dollarway..... 2-6201
Elleensburg Light & Water Department
City Collector City Hall..... 2-4926
Puget Sound Power & Light Co
510 N Pearl..... 5-8606
Night Sundays & Holidays call..... 2-7137
If no answer call..... 2-7262
Or 21-6271
Public Utility District 301 N Main..... 2-2691

Electric Motors

Fischer Electric 400 S Main..... 5-8901
Heinrich Auto Electric 405 N Main..... 2-3176

Electric Motors—Repairing

Berkey-Whiting Electric 5th & Kittitas..... 2-2421

Electric Shavers—See Shavers—Electric**Electric Supplies—Retail**

Knudson Carl Mill & Lumber Yard RFD 2.. 2-6276

Employment Agencies

Washington State Employment Service
305 N Main..... 2-6601

Engineers—Civil

AKINS DON INC 320 RR Av..... 5-8301

Engineers—Heating & Ventilating

Peterson Howard H
Miller Bldg Yakima Call Opr for... Yakima-4067

Excavating Contractors**BUCK-EDINGER TRUCKING CO**

EXCAVATING & BULLDOZING
Sand Gravel & Crushed Rock
DUMP TRUCKS FOR HIRE
ROAD WORK ETC

501 W North Av Yakima
Call Opr for..... Yakima 5730

Express Forwarding

Railway Express Agency Inc W 3rd..... 2-2561

ELECTRIC CONTRACTING

ELECTRIC HEATING
•
FREE ESTIMATES

& APPLIANCE REPAIRING

Electrical Contracting—Wiring—Maintenance
Exclusive Distributor For All
G. E. Appliances

DIAL
2-3066
NITES CALL
5-5364

ELECTRIC SUPPLY
Nearly 50 Years At Same Location
Fred Shaw
111 E. 4th

Dial 2-3066

ELECTRICAL CONTRACTING

Serving Kittitas Valley

MAINTENANCE and REPAIR OF ELECTRIC INSTALLATION and WIRING OF ALL TYPES

SPECIALISTS IN
ELECTRIC HEATING
CAVALIER—WESIX
THERMADOR—BERKO GLASS
HEAT—ELECTROMODE
WATER HEATERS

DIAL 5-8901

After Hours Call
5-9418

400 S. MAIN, ELLENSBURG

FISCHER ELECTRIC

Exterminating**WEAVER EXTERMINATING SERVICE**

Don't Tolerate - Exterminate
RATS - MICE - ROACHES
Flies, Bed Bugs, Hornets, Termites
All Pests

Servicing Central Washington

702 Broadway Yakima

Call Opr for.....Yakima-2-5905

Farm Equipment**ALLIS-CHALMERS FARM EQUIPMENT—**

REIMER'S FARM EQUIPMENT

Main & Manitoba.....2-2686

CASE FARM IMPLEMENTS—

QUIST C L FARM MACHINERY CO

204 N Main.....2-2821

HAAGEN FRANK A & SON

BRILLION SURE STAND SEEDERS
FREEMAN TWINE TIE BALERS
GOULD WATER SYSTEMS
ATLAS POWER TOOLS
FARMERS HARDWARE
LIFE TIME ALUMINUM GATES

202 N Pine.....2-3786

**INTERNATIONAL HARVESTER FARM
MACHINERY—**

RATHBUN IMPLEMENT COMPANY

3rd & Water.....2-1448

JOHN DEERE FARM EQUIPMENT—

WEBB TRACTOR & EQUIPMENT CO

1004 S Main.....2-2901

KELLEHER MOTOR CO

Ford Tractors-Dearborn Implements

6th & Pearl.....2-1408

Minneapolis Moline Farm Equipment

213 W 4th.....5-8551

OLIVER FARM EQUIPMENT—

REIMER'S FARM EQUIPMENT

Main & Manitoba.....2-2686

QUIST C L FARM MACHINERY CO

204 N Main.....2-2821

Rathbun Implement Company 3rd & Water.....2-1448

Valley Equipment Co 200 N Pearl.....2-5231

Whenever you can—Please call
by number. Also Long Distance
is faster if you call by number.

CALL
JAMES H. (Jim) MUNDY
For Fertilizers



LIQUID FERTILIZERS
CUSTOM APPLICATION

DIAL 21-6821

1607 NORTH B

ELLENSBURG

CLASSIFIED TELEPHONE DIRECTORY**Farm Equipment—Repairing**

Valley Repair Shop Kittitas.....8-4241

Federal Savings Loan Associations

See Savings Loan Associations

Feed Dealers

Independent Feed & Storage Kittitas.....8-3421

MID-STATE CO-OP

Main Office 3rd & Nanum.....2-1471

Washington Cooperative Farmers Association

401 Wenas.....2-1435

White-Dulany Company

Ellensburg Office North Wenas.....5-8506

Kittitas Office Kittitas.....8-3316

Fence Materials

Knudson Carl Mill & Lumber Yard RFD 2...2-6276

Fertilizers—Retail

Boston Hay Company Cascade Wy.....2-7676

Brotherton Seed Company 802 S Pearl.....2-6726

Dodge Produce Co Kittitas.....8-3281

Dodge-Ross Co Kittitas.....8-3281

Independent Feed & Storage Kittitas.....8-3421

MID-STATE CO-OP

Main Office 3rd & Nanum.....2-1471

MUNDY FERTILIZER CO 1607 North B.....21-6821

(See Advertisement This Classification)

Norkem-Ellensburg Arcade Bldg.....21-6861

SHELL NH3 SERVICE

NH₃ (Anhydrous Ammonia) contains
more nitrogen than any other kind of
fertilizer—82% guaranteed. Shell
NH₃ is sold applied—you save time,
save labor. It's the sure way to fer-
tilize your crops.

**"WHERE TO GET SERVICE"**

NORKEM-ELLENSBURG Arcade Bldg...21-6861

Washington Cooperative Farmers Association

401 Wenas.....2-1435

Fertilizers—Whsle & Mfrs

Brotherton Seed Company 802 S Pearl....2-7131

Lilly Chas H Co W 7th.....2-7886

Financing**NATIONAL BANK OF COMMERCE****BANK LOANS**

All Purpose - Attractive Rates

Business - Personal - Home

FHA LOANS

CHECKING - SAVINGS

Friendly - Complete Service

TRUST SERVICE**"FOR INFORMATION CALL"****NATIONAL BANK OF COMMERCE**

5th & Pearl.....2-1421

Fishing Tackle—Retail

Strange Willie Sporting Goods 506 N Pine..21-6881

Five Cents To One Dollar Stores

Alspaugh Five & Dime Store 412 N Pearl...2-3228

Floor Cleaning Compounds

See Cleaning Compounds

Floor Machines—Renting

LUNSTRUM PAINT & GLASS 414-416 N Pine.5-8461

"TELLS WHERE TO BUY IT"**Florists—Retail**

CAPITAL AVENUE GREENHOUSE 715 E Capital.2-6176

(See Advertisement This Classification)

DELSMAN'S GREENHOUSE 315 W 8th.....5-8216

(See Advertisement This Classification)

Food Products

Rawleigh Dealer RFD 3.....2-7119

Foot Treatment—See Chiroprodists**Fraternal Organizations**

Eagles Lodge No 2220 220 W 4th.....5-5488

Elks Temple

Club Room 5th & Main.....2-4646

Club Lounge 5th & Main.....2-6766

I O O F Lodge 307½ N Pine.....5-8077

Knights of Pythias 4th & Main.....5-8392

Masonic Hall 111½ W 6th.....2-3291

Moose Temple 110½ W 3rd.....5-5410

Freezers—Food Storage Units**GENERAL ELECTRIC HOME FREEZERS—**

ELECTRIC SUPPLY

111 E 4th.....2-3066

WESTINGHOUSE—

SALES & SERVICE

MORGAN APPLIANCE & TV CENTER

306 N Pine.....2-2370

Frozen Food Lockers—Renting

Locker Co-op 300 N Water.....2-3826

VALLEY LOCKER MARKET

Meat at Wholesale by Side or Quarter

CUSTOM CUTTING

and WRAPPING

The Modern Way...with

Airtight Foilrapp

310 N Main.....2-3426

If busy call.....21-6426

WOOD'S FOOD CENTER

Custom Cutting and Wrapping -.03 lb

Game - Our Specialty - .04 lb

Lockers 10 cu ft \$8.00 yr

Kittitas.....8-3461

Fruits & Vegetables—Retail

Easy Stop

Wholesale & Retail

Cascade Wy.....2-4031

Precision Fruit Co Cascade Wy.....2-6476

Fruits & Vegetables—Whsle

Dodge Produce Co Kittitas.....8-3281

Dodge-Ross Co Kittitas.....8-3281

Fuels

See Specific Kinds, i.e., Coal & Coke Dealers

Firewood, Oils-Fuel & Heating

Funeral Directors

EVENSON FUNERAL HOME 301 E 3rd.....2-6901

Fur Business—Retail

Carlson J W Furs 12 S 2nd Yakima

Call Opr for.....Yakima 2-1427

Fur Storage**MODEL LAUNDRY & CLEANERS INC**

207 N Pine.....2-6216

Furnaces—Heating

CHARTRAND'S SHEET METAL 215 W 3rd...5-8391

COLEMAN BLEND-AIR FURNACES—

DEAN'S

3rd & Pearl.....21-6451

Dean's 3rd & Pearl.....21-6451

GENERAL ELECTRIC—

SALES & SERVICE

HANK THE PLUMBER

502 N Pine.....2-3156

HasBrouck Sheet Metal Shop 215 N Pine...2-6626

HOLLAND FURNACES

Coal, Gas, Oil—gravity and auto-
matic-installed and guaranteed by
World's Largest Installers of Furn-
aces. Fifty Years Leadership in heat-
ing progress and satisfied customers.
Generous trade-in allowance.

**"WHERE TO BUY THEM"****HOLLAND FURNACE CO**

1020 Terrace Heights Wy Yakima

Call Opr for.....Yakima 2-9521

LENNOX SALES & SERVICE—

HasBROUCK SHEET METAL SHOP

215 N Pine.....2-6626

Lockwood Plumbing & Heating 105 E 5th...2-6606

(Continued Next Page)

DELSMAN'S GREENHOUSE

For All Occasions

WE TELEGRAPH FLOWERS

315 W. 8th

Ellensburg

**CAPITAL AVENUE
GREEN HOUSE**

SAY IT WITH FLOWERS—
"SAY IT WITH OURS"

WEDDINGS

PARTIES



CORSAGES

FUNERALS

Worldwide Telegraph Service

715 E. CAPITAL

CALL 2-6176

Furnaces—Heating—(Cont'd)**RAMSAY HARDWARE CO**

Dealer for Armstrong Furnaces
and Conversion Oil Burners
Other Leading Brands
Oil Burner and Furnace Servicing

416-418 N Pearl.....2-4736
After Hours Call 2-4078

Furnaces—Repairing & Cleaning**HOLLAND FURNACES**

Careful, thorough furnace cleaning
and expert repairing — all makes —
satisfaction guaranteed. Full-time
year-round service; fifty years experi-
ence. Holland efficiency means thrifty
economy.



"FOR INFORMATION CALL"

HOLLAND FURNACE CO

1020 Terrace Heights Wy Yakima
Call Opr for.....Yakima 2-9521

Wampole Fred RFD 3.....8-3444

Furniture Dealers—New

BROTHERTON FURNITURE CO 109 E 3rd.....2-6126
FITTER BROS 4th & Main.....2-6411
POWELL FURNITURE CO 500 N Pearl.....2-2526
Thome Furniture Co
317 W Yakima Av Yakima
Call Opr for.....Yakima-6032

Furniture Dealers—Used

HARRIS' BARGAIN HOUSE 311 N Main.....2-7811
POWELL FURNITURE CO 500 N Pearl.....2-2526

Furniture Repairing & Refinishing**BILL'S BUILD IT**

See Our Ad Under Upholsterers
1006 E Capital.....21-6611

Garages

CLOCK GARAGE THE RFD 3.....8-3041
HAAGEN FRANK A & SON 202 N Pine.....2-3786
Lynch Motor Service 604 W 8th.....2-6666
Seth & Klampher Auto Service
Main & Capital.....2-4178
Walker C J & Sons 201 N Main.....5-8651

Garbage Collection

ELLENSBURG GARBAGE CO Pix Theatre Bldg. 2-4651



ALL KINDS

- MIRRORS
- STORE FRONTS

DIAL 2-7651

PHARE BUILDING SUPPLY

S. MAIN

Garbage Disposal Equipment**GENERAL ELECTRIC GARBAGE DISPOSALS—ELECTRIC SUPPLY**

111 E 4th.....2-3066

Garden Equipment & Supplies—Retail

Dick's Pet & Garden Center 2nd & Pine.....2-2756

Gas—Bottled

Olsen's Service Cascade wy.....2-2811

Gas Companies**CENTRAL PROPANE GAS CO**

DISTRIBUTORS OF LIQUIFIED
PETROLEUM GAS
RANGES - WATER HEATERS
REFRIGERATORS

If we sell it—we service it free

1601 N 1st Yakima
Call Opr (Collect) For.....Yakima-2-8131
If no answer call.....6557

Gasoline & Oil Marketers & Distrs

ANDERSON OIL CO ofc S RR Av.....2-4156
GENERAL DISTRIBUTING CO
N Wenas & 6th.....5-8736
MID-STATE CO-OP Gas Plant 5th & Wenas.....5-8926
Passenger Oil Sales Cascade Wy.....2-6136
Richfield Oil Corporation W 5th & Dollar Wy.....2-3181
STANDARD OIL CO N Water.....2-6621
TEXACO OIL CO W 5th & Wenas.....2-6511
TIDEWATER ASSOCIATED OIL CO 1102 D.....5-8326
True's Oil Company S Main.....2-4256
UNION OIL CO Kittitas & Capital.....2-4401

Gift Shops

Button Jewelers 119 E 4th.....5-8106
DICKSON JEWELERS 418 N Pine.....2-2661
Trading Post The 423 N Pearl.....2-7031

Glass—Auto, Plate, Window, Etc**ELLENSBURG BODY & FENDER WORKS****AUTO GLASS**

Installed While-U-Wait
All Makes - All Models

410 N Main.....5-8271

KELLEHER'S BODY & FENDER SHOP

6th & Pearl.....2-6133
LUNSTRUM PAINT & GLASS 414-416 N Pine.....5-8461
PHARE BUILDING SUPPLY S Main.....2-7651
(See Advertisement This Classification)
PHARE PAINT STORE 107 W 5th.....2-2786

Glassware—Retail

Button Jewelers 119 E 4th.....5-8106

Government Offices—Federal

See Alphabetical Directory Under U. S.
Government

Grain Dealers

GILMOUR WARREN F 102 N Anderson.....2-3471
Warehouse Kittitas.....8-4231
Keets Inc 11th & C.....5-5352
MID-STATE CO-OP
Main Office 3rd & Nanum.....2-1471
RUGH WARD 711 W 8th.....2-2826
White-Dulany Company
Ellensburg Office North Wenas.....5-8506

Gravel—See Sand & Gravel**Greeting Cards—Retail**

Graham John W Co
Ellensburg Book & Stationery
Hallmark Greeting Cards
419 N Pearl.....2-3816

Grocers—Retail

Bungalow Market 401 W 8th.....2-7566
CHRISTIE'S MARKET
Open Suns & Holidays til Midnight
5th & Dollarwy.....2-6326
Gilmour Fred Grocery Kittitas.....8-3181
Gilmour & Gilmour 308 N Pearl.....2-1439
Mac's Cash Market 3rd & Sampson.....2-4786
Price-Less Market 3rd & Pine.....5-8176
Ralph's
Open Sundays & Holidays
404 E Capital.....2-7766
Rumburg's Grocery 807 Euclid Wy.....2-7311
Stop-N-Shop Market 5th & Pine.....2-3211
Thorpe Market Thorpe.....5-9656
Tucker's Grocery 8th & Chestnut.....2-2466
Vail's Market Capital Av & Anderson.....2-2211
Van's Grocery Thorpe.....5-9652
Whiteman's Grocery S Main & Tacoma.....5-8021
Wood's Food Center Kittitas.....8-3461

Grocers—Whsle

National Grocery Co 5th & Kittitas.....2-4201
Pacific Fruit & Produce Co 5th & Wenas.....2-1404

Gunsmiths

Vickerman W S 208 S Ruby.....2-2626

Handicraft Supplies

Hobby Shop The 914 E Capital.....5-8353
Sheeley Sewing Center 109 E 4th.....21-6242

Hardware—Retail**COAST TO COAST STORES**

**ABC AUTOMATIC
WASHERS & DRYERS**
Leonard Refrigerators
Ranges & Deep Freezers
Complete Paint Supplies
Siegler Heaters

4th & Pine.....5-8111

Cotton Bert L Hardware Kittitas.....8-3681
ELLENSBURG HARDWARE 411 N Pearl.....2-6756

HAAGEN FRANK A & SON

- Life Time Aluminum Gates
 - Fire Fighting Equipment
 - V Belts and Pulleys - All Sizes
 - Gould Water Systems
 - Cattle & Hog Oilers
 - Atlas Power Tools
 - Toro Power Lawn Mowers
- 202 N Pine.....2-3786

LENTZ HARDWARE 309 N Pine.....2-2371

MID-STATE CO-OP

Gas Plant 5th & Wenas.....5-8926

RAMSAY HARDWARE CO

"House of Quality Since 1885"
Complete Line of Hardware - Paints and
Tools - Fairbanks-Morse Home Water
Systems
Plumbing - Sheet Metal Shop
416-418 N Pearl.....2-4736

Toombs B E Co 308-310 N Pearl.....2-2506
WOODS' AUTO SUPPLY 407 N Pearl.....2-2961

Hay

Anderson C E & Sons
Sunnybrook Ofc Cascade Wy.....2-6113

BOSTON HAY CO

Wholesale Dealer
HAY - GRAIN - STRAW
Retail Dealer
All Types Commercial Fertilizer
LONG DISTANCE HAULING
INSURED CARRIER

Cascade Hwy.....2-7676

Bruketta John Cascade Wy.....2-7141
Gilmour Warren F 102 N Anderson.....2-3471
Robbins H K Co 508 W 3rd.....2-4641
RUGH WARD 711 W 8th.....2-2826

Health Food Products—Retail

McNess Dealer RFD 1.....5-9618

Hearing Aids**ZENITH HEARING AIDS**

New 3-transistor models meet ev-
ery hearing aid need. Outstanding
features, performance, convenience!
Low price, small operating cost.
1-Year Warranty, 5-Year Service
Plan. By makers of Zenith TV,
radios. 10-DAY MONEY-BACK GUARANTEE



"WHERE TO BUY THEM"

BOSTIC'S DRUG STORE 4th & Pearl.....2-6261

Heaters**ELECTRIC SUPPLY**

ALL TYPES ELECTRIC HEAT
Electromode - Thermador & Wesix
Wall Heating Panels
Roberson & Electromode Floor
and Ceiling Radiant Heat

111 E 4th.....2-3066

Knudson Carl Mill & Lumber Yard RFD 2.....2-6276

Heating Contractors

See Contractors—Heating & Ventilating

Heavy Hauling

See Moving Service—Heavy Hauling

Hobby Supplies—See Handicraft Supplies**Hospitals**

Ellensburg General Hospital 814 E 3rd
1st Floor.....2-1400
2nd Floor—Maternity.....2-4901
Morris Sorensen Memorial Hospital
507 N Nanum.....2-1481
Valley General Hospital & Clinic 301 E 4th.....2-1451

Hotels

ANTLERS HOTEL 525 N Pearl.....2-1477
Edison Hotel 3rd & Main.....2-3446
Ellensburg Hotel N Main.....2-3256
ELTON HOTEL 4th & Pearl.....2-1473
VALE HOTEL
Weekly & Monthly Rates Available
115½ E 4th.....2-3323
WEBSTER HOTEL 3rd & Pearl.....2-1401

Directory Advertising Pays

INSECTICIDES WEED KILLERS

Distributors and Dealers
For All Leading Manufacturers

Largest, Most Complete
Stock of Agricultural
Chemicals In
Central Washington

Specializing in Farm Problems

W. BROTHERTON SEED COMPANY



802 S. PEARL

TELEPHONE 2-6726

Complete
INSURANCE
Service

24 HOUR
SERVICE

Dial

2-3676

IF NO ANSWER
CALL 5-8261
OR
2-7366

Automobile
Fire
Liability
Property Damage
Inland Marine
Surety Bonds
Life

BURRAGE INSURANCE AGENCY

219 4th Ave. East

Ice

Ralph's 404 E Capital.....2-7766
Snack Shop The
Crushed Ice-Open 9:30 AM to 8:00 PM
107 E 3rd.....2-2346

Ice Cream—Mfrs & Distrs

DARIGOLD ICE CREAM—
KITTITAS COUNTY DAIRYMEN'S ASSN
3rd & Water.....2-2161

Income Tax Consultants See Tax Consultants

Insecticides

Brain Jas T Commercial Spraying
See our Ad Under Spraying
315 W Helena.....2-7426
Brotherton Seed Company 802 S Pearl.....2-6726
(See Advertisement This Classification)

Insulation Contractors—Cold & Heat

WASHINGTON CONSTRUCTION CO
706 N Sprague.....2-4166

Insurance Agents & Brokers

Ambos Russell J 215 E 8th.....2-6856
APPLE BEAUMONT
Serving the Public Since 1917
408½ N Pearl.....2-4626
Burrage Insurance Agency 219 E 4th.....2-3676
(See Advertisement This Classification)
CAPITOL LIFE INSURANCE CO—
AMBOS RUSSELL J
215 E 8th.....2-6856

Chamness Real Estate & Insurance Co
202 E 4th.....2-2146
Evanston Theo O
All Types of Insurance
601 N Anderson.....5-8811

FARMERS INSURANCE GROUP

We can take care of any of your
insurance needs,
Automobile — Truck
Fire — Burglary
Liability — Life



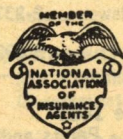
"We Live To Sell Insurance"
For faster claim service at lower
cost and prompt, courteous atten-
tion to any of your insurance
problems call **FARMERS INSURANCE GROUP**
"WHERE TO CALL"

FARMERS INSURANCE GROUP

Bob Battien-Dist Agent
Webster Hotel Bldg.....5-5320

(Continued Next Page)

FOR SERVICE



INSURANCE
REAL
ESTATE



ELEANOR MOORE

KITTITAS INSURANCE AGENCY

Telephone 8-3731

KITTITAS

Insurance Agents & Brokers

—(Cont'd)

Farmer's Insurance Group
Webster Hotel Bldg.....5-5320
Furman Z A
Representing Bankers Life Company
803 E Capital.....2-4896

GIBBONS JAMES J INS

Personal - Professional Service
BONDS - INSURANCE

"Where Insurance Is a Business
Not a Sideline"

Arcade Bldg
215 E 4th.....2-6816

GLENS FALLS INSURANCE COMPANY— CHAMNESS REAL ESTATE & INSURANCE CO

202 E 4th.....2-2146
If no answer call.....5-0216

HARTFORD FIRE INSURANCE CO— STOCKDALE REALTY CO

221 E 4th.....2-1486

Hartman George V 607 N Ruby.....21-6286
Johnson Marvin Ins Agency 302 N Pearl.....2-2521
Jones Donald F 310 N Pine.....2-7786
Kittitas Insurance Agency Kittitas.....8-3731
(See Advertisement This Classification)

MAYFLOWER INTER-INSURANCE EXCHANGE

STANDARD and
TEMPERANCE
POLICIES
AUTOMOBILE INSURANCE
SUBSTANTIAL SAVINGS
For **PREFERRED RISKS**



"WHERE TO CALL"

JOHNSON MARVIN INS AGENCY

302 N Pearl.....2-2521

Mutual Benefit Life Insurance Co of
Newark N J The 715 E 6th.....2-7341

MUTUAL OF ENUMCLAW INSURANCE

FIRE - AUTO
COMPREHENSIVE
Friendly Service
Since 1898



HOME OFFICE—ENUMCLAW, WASH.

"FOR INFORMATION CALL"

OFFER A B INSURANCE AGENCY

205 E 5th.....21-6341

OFFER A B INSURANCE AGENCY

"Every Type of Insurance"
FIRE - AUTO - LIABILITY - BONDS
Agent Farmers Mutual of Enumclaw
Special Agent Penn Mutual Life Ins Co
205 E 5th.....21-6341

Pacific Mutual Life Ins Co 701 N Pine.....5-5307

Long distance rates
are even lower
after 6 P.M. and
all day Sunday.

Insurance Agents & Brokers

—(Cont'd)

PREFERRED INSURANCE EXCHANGE

"PREFERRED RATES
for
PREFERRED RISKS"
AUTO . . . TRUCK
CASUALTY
FIRE . . . LIFE
24 Hour Nation-Wide Claims Service

"WHERE TO BUY IT"

Sunset Insurance Agency
601 N Anderson.....5-8811

PRUDENTIAL INSURANCE CO OF AMERICA

D Ken Martin - Dist Agent

Ellensburg:
Ofc & Res.....5-5365
Yakima Ofc.....Yakima-3-5573
13 Vista Road.....5-5365

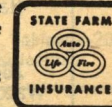
Snowden H Agcy 426 N Pine.....2-4066

STATE FARM INSURANCE

Famous careful-driver auto insurance
at rock-bottom rates. We insure more
cars than any other company.

Fast, fair claim service. 7000 agents
in U.S. and Canada.

Also life and fire insurance; residence liability.



"FOR INFORMATION CALL"

STATE FARM INSURANCE COMPANIES

310 N Pine.....2-7786

State Farm Insurance Companies

Donald F Jones-Agent
310 N Pine.....2-7786

STEWART G R

INSURANCE
SURETY - FIDELITY BONDS

— Agent —

United States Fidelity & Guaranty Co.

Davidson Bldg.
408½ N Pearl.....2-2726

Sunset Insurance Agency 601 N Anderson...5-8811
THAYER BERT A REALTY CO 217 E 4th.....2-6121
Tiffany Agency Inc Insurance 304 N Pearl...2-6251
TURLEY WAYNE Cascade Wy.....2-2386
White-Fitterer Co 318 N Pearl.....2-4921

Insurance Consultants

Burrage Insurance Agency 219 E 4th.....2-3676

Interior Decorators

FITTERER BROS 4th & Main.....2-6411

Investments

MUNDY REAL ESTATE CO

Agent for John R Lewis, Inc Investment

Securities Seattle Washington
302 N Pearl.....2-7171

Iron Ornamental Work

Community Hardware
S 11th Av & Division St Yakima
Call Opr for.....Yakima 3-9927

Iron Scrap—See Junk Dealers

Irrigation District

See Water Companies—Public Utility

Janitor's Supplies**HELEN'S SUPPLY CO**

Brooms - Brushes - Sweeping Compounds
Soaps - Detergents - Disinfectants
Waxes - All Types
Mop Buckets - Waste Receptacles
Paper and Soap Dispensers
Vacuum Cleaners - Polishing Machines

611 W 11th.....21-6306

Jewelers—Retail**BUTTON JEWELERS**

WATCHES - Elgin - Bulova - Waltham
Gruen - Hamilton - Wyler
STERLING - Wallace - Gorham - Towle
International - Heirloom - Reed & Barton
CHINA - Lenox - Franciscan - Castleton
DIAMONDS By Keepsake

119 E 4th.....5-8106

DICKSON JEWELERS

Hamilton - Bulova - Elgin - Croton
LeCoultrre

Columbia Diamond Rings

1847 Rogers - Silver - Community

Watchmakers - Jewelers - Engravers

Registered Cronograph Watch Technician

"The Little Store with the Merchandise"

418 N Pine.....2-2661

Junk Dealers

Middleton Gus 213 S Water.....21-6416

VALLEY JUNK CO 1801 E Moxee Av Yakima

Call Opr for.....Yakima-3-3555

Kitchen Equipment**SURLEY KITCHEN EQUIPMENT—****RAMSAY HARDWARE CO**

416-418 N Pearl.....2-4736

Labor Organizations

Culinary & Bartenders Local No 296

213 W 3rd.....5-8026

Laundries**MODEL LAUNDRY & CLEANERS INC**

207 N Pine.....2-6216

Leather Goods—Retail

Helen's Supply Co 611 West 11th.....21-6306

Shelton's Saddlery 4th & Main.....2-6048

Letter & Addressing Service**PRITCHARD'S MAILING SERVICE**

COMPLETE DIRECT MAIL SERVICE

Over 35,000 Addresses Available

LETTER COMPOSITION - MAILING

SERVICE

SALES PROMOTION

9 N 2nd Yakima

Call Opr for.....Yakima 5766

Libraries—Public

Library Public 3rd & Ruby.....2-3876

Lime**JACK J A & SONS INC**

Industrial-Commercial-Agricultural

Limestone Flour Bulk or Sack

7309½ E Marginal Wy Seattle

Call Opr for.....Lander 6340

Linoleum—Laying**WASHINGTON CONSTRUCTION CO**

"The Covering Makes the Difference"

Armstrong - Pabco - Robbins

— TILE —

CORK — RUBBER — ASPHALT

Linoleum for Every Flooring Need

Free Estimates - No Obligation

706 N Sprague.....2-4166

Linoleum—Retail**FITTERER BROS** 4th & Main.....2-6411**Livestock****BUSBY ORREN E****LIVESTOCK DEALER**

Cash Buyer of

HORSES

CATTLE

SHEEP

HOGS

S Maple.....2-6661

Clerf Livestock Co Kittitas.....8-3831

ROBBINS PACKING COMPANY INC RFD 1.....5-8821**SCHAAKE PACKING CO** RFD 1.....2-1484**Livestock Breeding**

Dunlop Arthur C 401 E Helena.....2-7159

Evergreen Northwest Breeders Inc

4th & Main.....2-2171

NORTHWEST CO-OP BREEDERS

The Best of Artificial Breeding
from Sires selected for Type and
Production from America's
outstanding blood lines.

Guernsey - Holstein - Jersey
Hereford - Milking Shorthorn

*"WHERE TO CALL"***EVERGREEN NORTHWEST BREEDERS INC**

4th & Main.....2-2171

Livestock Buyers

Ellensburg Sales Yard Vantage Hwy.....2-2186

Livestock Hauling**HIGHFILL D M****GENERAL HAULING**

Licensed for State of Washington

LIVESTOCK - FERTILIZERS - SILICA

HAY - GRAIN - STRAW

Insured Carrier

Kittitas.....8-3821

You're
never alone
with a telephone!

Loans**ELLENSBURG FEDERAL SAVINGS & LOAN ASSN****SAVINGS**

Each Account Insured Up to \$10,000

REAL ESTATE LOANS

F.H.A. - G.I. & CONVENTIONAL

A W Crisp - Manager

403 N Pearl.....2-4631

ELLENSBURG FINANCE & LOAN COMPANY

Money! If You Need It!

Signature Loans - Personal Loans

Salary Loans - Furniture Loans

\$50.00 to \$500.00

402 N Pearl.....2-6911

NATIONAL BANK OF COMMERCE**BANK LOANS**

All Purpose - Attractive Rates

Business - Personal - Home

FHA LOANS**CHECKING - SAVINGS**

Friendly - Complete Service

TRUST SERVICE*"FOR INFORMATION CALL"***NATIONAL BANK OF COMMERCE**

5th & Pearl.....2-1421

Production Credit Association 221 E 4th...2-3025

Loans—Real Estate

See Banks, Mortgages & Real Estate Loans

Locksmiths

Lock Shop The 914 E Capital.....5-8353

Logging Companies

Cascade Lumber Co 109 N Kittitas.....2-3921

Holmes Spur RFD 2.....2-7346

Cascade Lumber Co Logging Dept

109 N Kittitas.....2-7346

Lumber—Retail**ELLENSBURG LUMBER COMPANY**

109 N Kittitas.....2-1443

Knudson Carl Mill & Lumber Yard RFD 2...2-6276

TANEUM CREEK LUMBER CO Thorp.....5-9702

If no answer call.....5-9945

Tum-A-Lum Lumber Co 601 W 5th.....2-4851

Lumber—Whsle

Knudson Carl Mill & Lumber Yard RFD 2...2-6276

Taneum Creek Lumber Co Thorp.....5-9702

Machine Shops

Ellensburg Iron Works 201 N Pearl.....5-8356

Hasco Bowers Field.....21-6511

Smith S L Machine Shop 1505 N Water...2-4862

WALKER C J & SONS

Lathe Work - Drilling - Milling

Welding

Sprockets & V-Pulleys

Shafting & Supplies

Motor Rebuilding and Rebuilding

We Specialize in Precision Work

201 N Main.....5-8651

Machinery**HAAGEN FRANK A & SON** 202 N Pine.....2-3786

Reimer's Farm Equipment Main & Manitoba 2-2686

Webb Tractor & Equipment Co 1004 S Main 2-2901

Magnetos

Heinrich Auto Electric 405 N Main.....2-3176

Mail Order Houses**SEARS ROEBUCK & CO CATALOG**

SALES OFFICE 107 E 4th.....2-1441

Mailing Service

See Letter & Addressing Service

Markets

Christie's Market 5th & Dollarway.....2-6326

Davis Glenn Meats Kittitas.....8-3891

Ray's Market 421 N Pearl.....2-4606

RED & WHITE MEAT DEPT Kittitas.....8-3891

Valley Locker Market 310 N Main.....2-3426

Massage

Ellensburg Health Center 605 N Ruby....21-6741

Mattresses—Renovating

Patton Mattress Co

2302 Nob Hill Blvd Yakima

Call Opr for.....Yakima 2-2052

(See Advertisement This Classification)

Good Party-Line Neighbors
Remember to Space
Their Calls

**MATTRESSES
RENOVATED****MATTRESSES****BOX SPRINGS**

● Rebuilt
● Custom Built
● New



SATISFACTION GUARANTEED

28 YEARS EXPERIENCE

Free Pick-Up & Delivery Service

"We Sell Sleep"

**PATTON
MATTRESS CO.**

Yakima 2-2052

or

Ellensburg 2-7736

2302 NOB HILL BLVD., YAKIMA
IN ELLENSBURG CALL
BILL'S UPHOLSTERY - 5th & Dollarway
ELLENSBURG 2-7736