

*An*

# ALBUM

*OF KLINKITAT COUNTY*

# MEMORIES



**KLINKITAT COUNTY  
HISTORICAL MUSEUM**

*Established 1963*

127 West Broadway  
Goldendale, Washington





The Parlor contains organ, "talking machine," albums



Marble-top sideboard, chandelier, highlight Dining Room



This 20-room mansion of 1902 vintage was built by William B. Presby, early day attorney. With the exception of new interior decorating the beautiful mansion is in its original state. The home was purchased by the Klickitat County Historical Society in 1961 with ample funds, donated by the citizens of Klickitat County.

Operation and maintenance of the Museum is financed through a yearly membership fee of only \$1.00 and the 50 cent admission charge.

Visitors will find one of the finest exhibits of antique furnishings and relics used during the 100 years of the county's settlement prior to the opening of the museum in April, 1962.

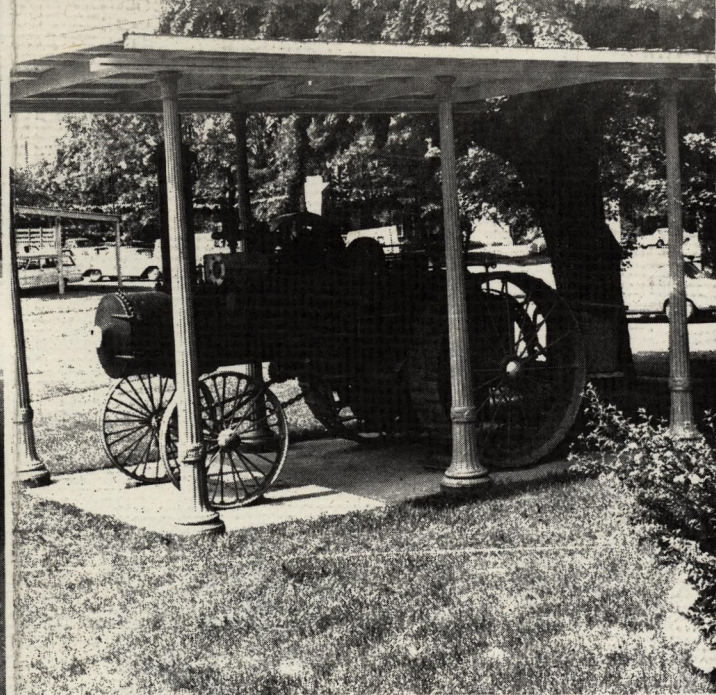
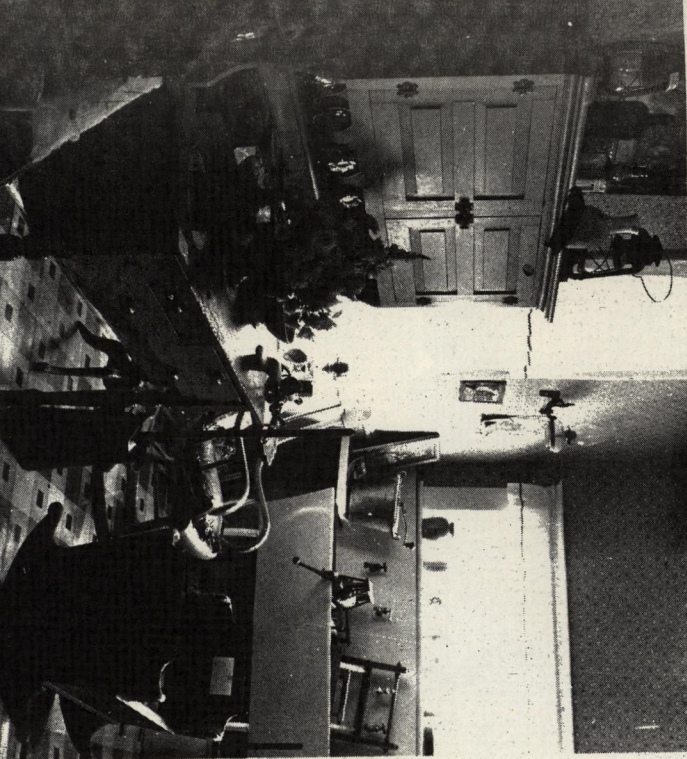
The various rooms are tastefully furnished in pieces which harmonize with a certain period of time or location within the county.

Regardless of your interests in pioneer lore you will find it on display in this massive beautiful old structure.

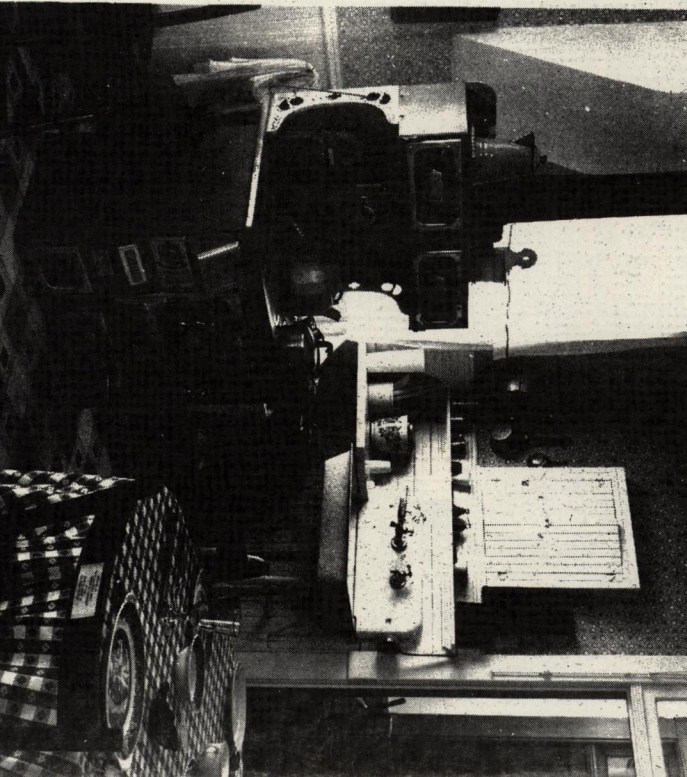


The wood-paneled bathroom contains marble-topped sink with lead-piping for drains, heavy cast-iron tub. Numerous "accessories" are included in the room.





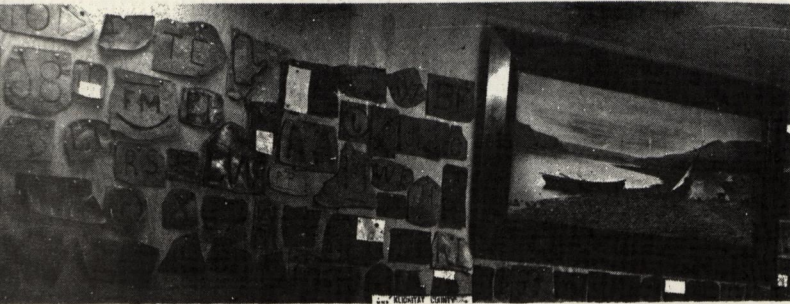
Russell Steam Traction Engine decorates front lawn



Handsome "Golden Toned" Organ in East Klickitat Room



The large, spacious Kitchen is a delight to the memory. It is stocked with many home utensils which were essential equipment in the home of 70 years ago, including cradle, rocking chairs, rawhide-laced kitchen chairs. Also to be seen are Willoware, heavy glass, checkered tablecloth. Over 300 Klickitat county brands are displayed on leather patches, on walls of "McEwen's Brand Room." (at left)



---

## SPECIAL EXHIBITS

At least once a year the Museum will feature special exhibits. One room of the upper floors has been reserved for this purpose.