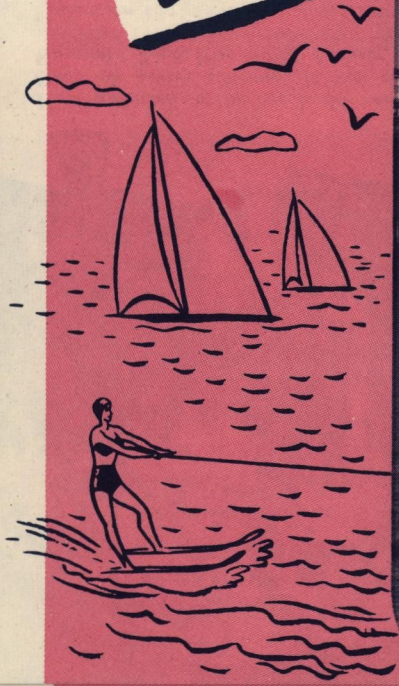


Seattle

WELCOMES YOU



SEATTLE - A "MUST" for Vacationers





Location

JUST to jog your memory, Seattle is located on Puget Sound, an arm of the Pacific Ocean, between the Cascade Mountains on the east and the Olympic range on the west. We have a population in our metropolitan area of approximately 625,000 and the city itself spreads out over almost 74 square miles of land.

There are two fresh-water lakes within the city—Lake Union and Green Lake—and a third, 26-mile-long Lake Washington, forms our eastern boundary. Lakes Union and Washington are connected with Puget Sound by the eight-mile long Lake Washington ship canal and locks, the second largest in the Americas. Seattle has a total waterfront of 193 miles.

Time Table to Seattle

From—	PLANE (Hours)	TRAIN (Hours)	BUS (Hours)	AUTO (Days)
San Francisco	3	24	25 ¾	2
Los Angeles	4 ¾	33 ½	34 ¼	3
Twin Cities	6	38	49 ¾	5
Chicago	10	45	62	6
New York	10 ¼	63	87	8
New Orleans	17 ½	64	90	8
Anchorage	6			8
Honolulu	12 hours by Air—4½ days by ship			

Check these Vacation Highlights

PARKS & BEACHES

IT'S a land of magnificent city parks; of recreation areas lovely beyond description. There are 45 parks in Seattle, 55 playfields and 9 field houses. The city operates 10 public bathing beaches, three on salt water and seven on fresh water. We invite you to use these facilities.

FLOWERS

THE University of Washington Arboretum is one of the community's many attractions. You will enjoy it. It covers fifty-four blocks in the heart of the city, has more than 2000 varieties of trees, shrubs and plants from all parts of the world.

RECREATION

THE mild year-round climate makes outdoor recreation possible in every season. You can play golf on one of the many scenic, tree-lined courses, sail on inland seas, or sparkling lakes—in any week of the year. Swim, fish, hunt, ski, ride the range—whatever you desire. For spectator sports, the famed intercollegiate crew regattas on beautiful Lake Washington, professional baseball games, horse racing, thrilling ski meets, and motor boat races add to your holiday enjoyment.

A CHARMED LAND

HERE'S a land of endless enchantment, varied wonders, scenic grandeurs. It's impossible to put Seattle in a few words—you must see it to believe it. Seattle has virgin evergreen forests, breath-taking snow-crowned mountains, giant rivers, sheltered inland seas, a cosmopolitan seaport, rich farms. For the vacation of your dreams, come to Seattle.

EDUCATION

HERE are vigorous, hardy people with the highest regard for education and cultural advancement. Universities, colleges and other institutions of higher learning are among the finest in the nation. With our school system complete as it is, our children can attend school from kindergarten through University without leaving the city.

SPECIAL EVENTS

ONE of the city's most exciting celebrations is the Salmon Derby held in September. Here you may catch the finest of deep water fish, the King or the Tyee salmon. A short drive from Seattle one may view the agricultural and other riches of Washington at the Western Washington Fair held in Puyallup in September. Just over the Cascade mountains in the spring is the famous Washington State Apple Blossom Festival. And all around the area, one may partake of the festive spirit that abounds.

Address Inquiries to

SEATTLE CHAMBER OF COMMERCE

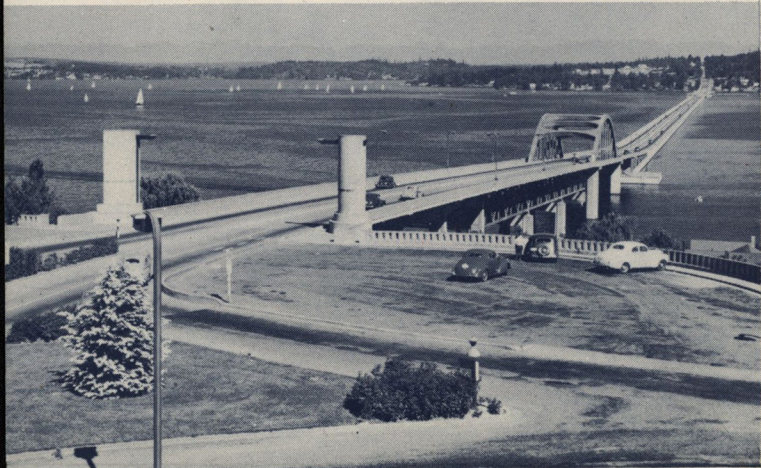
215 Columbia Street

• Seattle 4, Washington

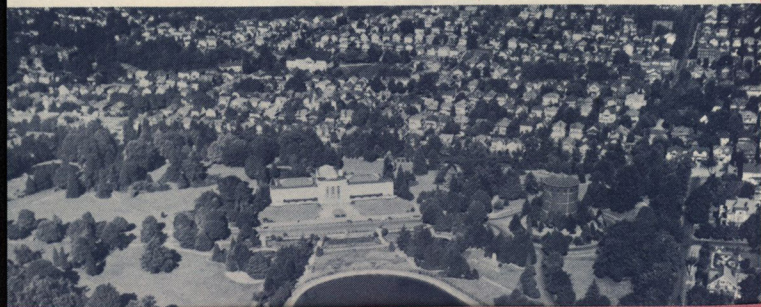




Here unfurled to the eye is the vast expanse of Mount Rainier. Once an active volcano, it was called by the Indians "The Mountain That Was God." Rainier is perpetually snow covered and rises 14,408 feet above sea level. Picture taken at Paradise Valley, on the mountain's slopes, during the middle of summer. A trip to Mount Rainier during your visit should be a "must."



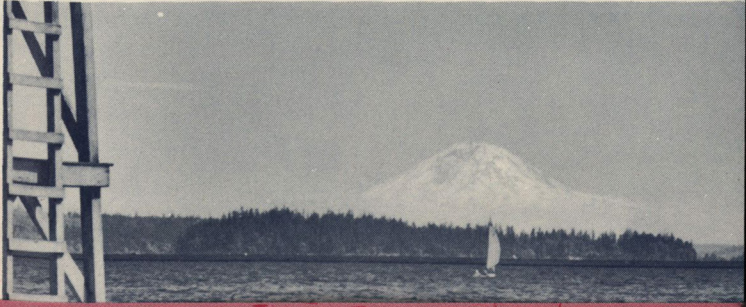
The Lake Washington Floating Bridge at Seattle is unique among the bridges of the world. Composed of 25 concrete and steel pontoons, this four-lane highway, a mile and a quarter long, floats on the surface of the lake. This view, looking east from Seattle, shows the full length of the bridge from Seattle to Mercer Island, with the Cascade Mountains in the background.



Salmon fishing is a popular year 'round sport on Puget Sound. This trio lands an 18-pound Silver in Elliott Bay—in full view of the Seattle skyline. The other popular fishing area is just off the U. S. Government Locks in Puget Sound. Lake and stream fishing are just as exciting and lures thousands of enthusiastic Isaac Waltons to Seattle each year.



This is a striking air view of Seattle with the city's harbor, Elliott Bay, in the right foreground and its metropolitan business district spread out in the central left foreground. Towering in the background is beautiful Mount Rainier and to the left can be seen part of 26-mile-long Lake Washington, which forms the city's eastern boundary.



Accommodations

SEATTLE has many excellent hotels famous for comfort, fine service, good food and reasonable rates the year around. On the outskirts of the business district and located on primary highways are many superb motor courts catering to your every wish. Several trailer camps are located just out of the city. As for fine restaurants, the city has long been famous for fine food. Ask for our hotel, motor court and restaurant list.



What to Wear

SEATTLE'S mild climate, comfortable and pleasant day and night makes the problem of clothes for wear in this region very simple. Just wear the same clothes you wear at home during the spring. We suggest comfortable sport clothing for the summer months, heavier clothing for the winter months including a light coat. Bring a light wrap for night wear during summer months and your visit in Seattle will be outstandingly pleasant.

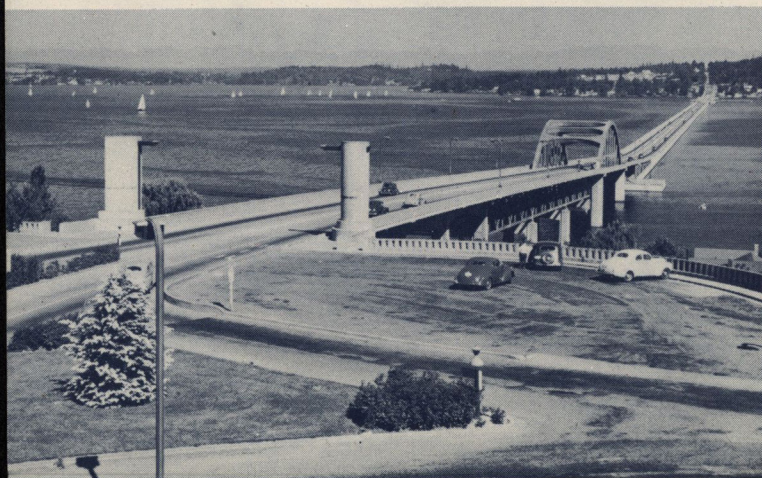
Climate

ALTHOUGH Seattle is one of the most northerly cities, it has a mild, stimulating climate that is ideal for work or play. Here is climatic variety but no extremes. Cool evenings and nights are characteristic. With ocean winds blowing from one side, mountain ranges giving protection on the other, Seattle's climate is "air-conditioned" blending, as it does, the air of the mountain, sea and forest. Seattle has never experienced temperatures of 100 degrees or zero.





Here unfurled to the eye is the vast expanse of Mount Rainier. Once an active volcano, it was called by the Indians "The Mountain That Was God." Rainier is perpetually snow covered and rises 14,408 feet above sea level. Picture taken at Paradise Valley, on the mountain's slopes, during the middle of summer. A trip to Mount Rainier during your visit should be a "must."



The Lake Washington Floating Bridge at Seattle is unique among the bridges of the world. Composed of 25 concrete and steel pontoons, this four-lane highway, a mile and a quarter long, floats on the surface of the lake. This view, looking east from Seattle, shows the full length of the bridge from Seattle to Mercer Island, with the Cascade Mountains in the background.



Beautiful Volunteer Park on Capitol Hill, Seattle. Within the park are an observatory, the Seattle Art Museum, conservatories and greenhouses. The park is noted for its lovely formal gardens and for the sweeping view which can be obtained of the city, the lakes and the mountains. This is one of Seattle's 45 parks.



Here you get a striking air view of a major portion of the 682-acre University of Washington Campus. The buildings in the lower foreground are those of the new Medical and Dental School, which were completed during 1949. The pool of water in the center is "Frosh Pond" where in years past unsuspecting freshmen were bathed as an indoctrination to Campus life.



Skies may be sunny and the evergreens throwing shadows across the highway but Mount Rainier presents a snow-capped picture the year around. Here's how Rainier looks from Chinook Pass, just two hours' drive from Seattle, on a sunny afternoon. Chinook Pass is on one of the three major east-west highways leading from eastern Washington to Seattle.



**FUN!
FOR EVERYONE!**

**IN THE
EVERGREEN PLAYGROUND**

SEATTLE is the vacation playground air-conditioned by Nature! The city nestles between two of the greatest mountain ranges of the world, the stately Cascades and the rugged Olympics and between the salt waters of Puget Sound and the fresh waters of Lake Washington. Seattle is within a few hours drive of snow-capped Mt. Rainier, of 250 fresh water lakes and of 2,000 miles of Puget Sound's beach area. Within her city limits she offers indoor and outdoor sport and entertainment facilities on land and water the year 'round. At every turn, scenic beauties and wonders come into view. Mountains, beaches, forests, lakes, skiing, fishing, boating and hunting country are near at hand.

Bring the entire family. They'll find so much to enjoy. It's a fairyland for children. The gentle climate makes travel and outings so pleasant you'll want to return again and again.

Just as a precaution, we suggest you make your lodging reservations in advance. It isn't necessary, in most cases, but in order that you might better enjoy your trip to Seattle we suggest that you write for reservations in advance of your arrival. We also suggest that you call at our Tourist Information Desk when you arrive for interesting suggestions on what to do and what to see while in Seattle.



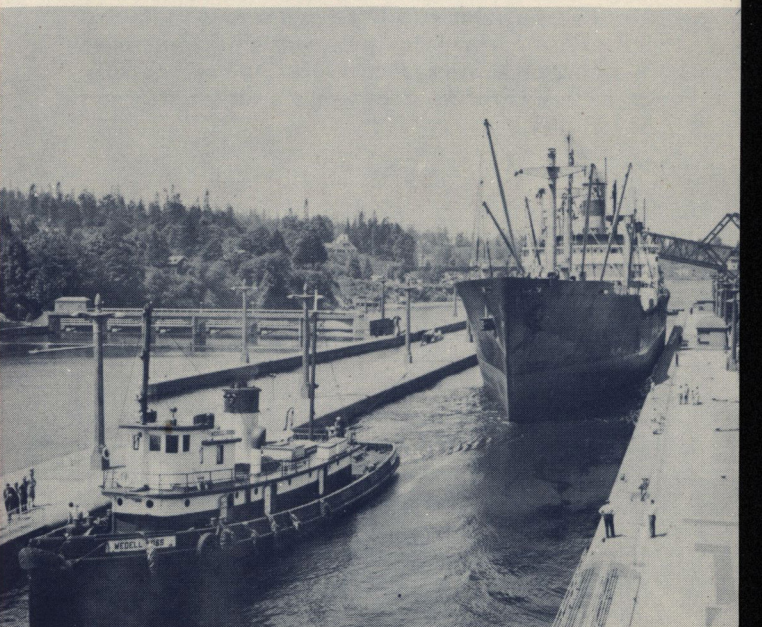
Salmon fishing is a popular year 'round sport on Puget Sound. This trio lands an 18-pound Silver in Elliott Bay—in full view of the Seattle skyline. The other popular fishing area is just off the U. S. Government Locks in Puget Sound. Lake and stream fishing are just as exciting and lures thousands of enthusiastic Isaac Waltons to Seattle each year.



This is a striking air view of Seattle with the city's harbor, Elliott Bay, in the right foreground and its metropolitan business district spread out in the central left foreground. Towering in the background is beautiful Mount Rainier and to the left can be seen part of 26-mile-long Lake Washington, which forms the city's eastern boundary.



It is always pleasure time in Seattle. Basking in the warm summer sun on beautiful Lake Washington which forms Seattle's eastern boundary are a trio of swimmers on one of the many floats which dot the lake. The dark line running across the center of the photograph is the Lake Washington Floating Bridge, largest of its kind in the world.



A scene of boating activity every day of the year is the United States Government Locks located in Northwest Seattle. Here on weekends hundreds of pleasure craft go from Lake Union into Puget Sound and return. This picture shows a Victory ship being towed through the Locks by a bustling tug. This ship has just risen 12 feet from the salt water below the railroad bridge.



Here is a spectacular view of the sky-line of Seattle taken from West Seattle. Totem poles are numerous in Seattle and the view is a typical one. The mountains beneath the clouds are the Cascades where one may ski the year around. It is often said that in two hours from Seattle one may travel by car or bus from Sea-level to Ski-level.