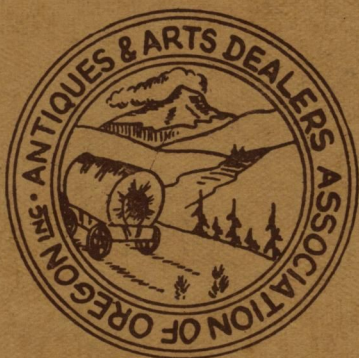


**Antiques and Art
Dealers Association of Oregon,
Inc. (Since 1951)**



The Antique Dealers belonging to this
Association take pride in their business
and guarantee that their merchandise is
as represented.

These Are Good Shops To Visit

GREATER PORTLAND AREA

OFFICERS

PRESIDENT

Virginia Thompson
1007 S. E. 12th Avenue
Portland, Oregon

VICE-PRESIDENT

William F. Boubel
1116 N. E. 21st Avenue
Portland 12, Oregon

SECRETARY

Elaine Hilby
2136 N. E. 42nd Avenue
Portland, Oregon

TREASURER

Clara Rinearson
2016 Jefferson Street
Milwaukie, Oregon

TRUSTEES

Ruth Ellison
Grace Gray
Esther Crull
Grace Wilkins
Lucille Green
Bill Jackson

HISTORIAN

Betty Martin
14311 N. E. Knott
Portland, Oregon

AGENT OF RECORD

William F. Boubel
1116 N. E. 21st Avenue
Portland, Oregon

GREATER PORTLAND AREA

ANTIQUES & "HAS BEENS" - The Joneses
Primitives, Stoves, Glass, Furniture
9661 S.W. Canyon Rd. (97225) - CY 2-1797
Open Daily and Sun. P.M. - Closed Mon.

BURNETT'S COTTAGE ANTIQUES
Glass, China, Furniture
3216 N. Lombard (97217)
289-9998

THE CANDELIER SHOP—ANTIQUES*
Virginia A. Thompson
Glass, China and Oriental Art
1007 S.E. 12th Ave. (97214) - 232-6654

CATHY'S ANTIQUE SHOP*
Cathy Bloch, Owner
2425 N.W. Lovejoy (97210) - 223-1767
Imports - Orientals - French Cameo

CANYON TREASURE TROVE
Antiques Direct From England
3380 S.W. Underwood Dr. (97225) - 292-5719
Marguerite-David West Call for appointment

COLD COMFORT FARM ANTIQUES*
Early American Country Things
9300 N.W. Cornell Rd. - CY 2-4936
Call for appointments (Change of address in Spring)

CONKLIN'S ANTIQUES
Vivian Conklin
Furniture, Haviland, Cut Glass
1212 N. E. 122nd (97220) - AL 3-6064

*See display ad.

EVILO EATON'S ANTIQUES

General Line

7928 S.E. Stark (97215) - 252-6268

RUTH EDHOLM ANTIQUES

Antique Dolls and Miscellaneous Antiques

6829 S.E. 82nd Ave. - (97266)

PR 1-7940

FIRESIDE ANTIQUES SHOP*

Art Glass, Silver, Jewelry, Cut Glass, China

Corner 39th & N.E. Sandy (97232)

AT 1-8482

HILBY'S ANTIQUES*

Art Glass and General Line

2136 N.E. 42nd Ave. - (97213)

Tel. 288-2273

HOLLYHOCK COTTAGE ANTIQUES*

Hours: 1:30 to 6 p.m. - Eves and Sun. by appt.

2914 N.E. 50th Ave. (97213)

AT 7-1300 (Mrs. Tschanz)

JEANETTE'S ANTIQUES*

5925 N.E. Gilson (97213)

Mrs. Jeanette Dryer 236-5852

General Line

THE LAMPLIGHTERS*

We specialize in electrifying Antique Lamps

2937 E. Burnside (97214)

BE 5-5157 - BE 4-2303

M. ELIZABETH SACKETT

Prints and Maps

10 N.W. 23rd Ave. (97210)

CA 2-6642 (A.M.)

*See display ad.

FRED SIEDOW

American Antique Furniture and General Line

Also Repairing and Refinishing

5744 E. Burnside (97215) - BE 6-0336

TREASURES TO TRIFLES*

Diversified Antiques and Thingamees

Glass, China, Paintings, Furniture

1216 S.E. Belmont (97214) - 235-0547

MILWAUKIE ANTIQUES*

Grace Gray - Clara Rinearson

2016 Jefferson St., Milwaukie, Ore. (97222)

OL 4-2612

BAKER'S BRIDGE ANTIQUES*

Audrey B. Cheney

P.O. Box 65

Clackamas, Oregon

Phone: 658-3563

EARLY AMERICAN SHOP*

Specializing in Primitives

14004 S.E. Schroeder Ave., Milwaukie, Ore. (97222)

Esther Crull - OL 4-3875

ESTELLE'S ANTIQUES*

Jewelry - Lamps - Art Glass - China - Silver

19407 S.E. River Road (97222)

656-4533

Appointment advised

GLENN DAUGHERTY

THE BARCLAY HOUSE

Antiques and Decorative Arts

Oregon City, Oregon - 656-0796

ANTIQUES — SPECIAL SERVICES**WILLIAM F. BOUBEL**

Expert Repairing and Refinishing

1116 N.E. 21st Ave. (12) - AT 1-6144

Between Sandy and Broadway

*See display ad.

ALOHA, OREGON

DOROTHY DEE'S ANTIQUES
18125 S.W. Alexander, Aloha - MI 4-1216
Art Glass - Primitives - Fine China
Dorothy Dee LaMear

ASHLAND, OREGON

FLINT'S ANTIQUES AND COUNTRY STORE
Early American primitives, oldtime candles
1st & B Streets
Phone: 482-2466

HEIRLOOM ANTIQUES
Main Street - Center of town
Bette Hampton - Reba Whittle
Tel. 482-2496

BEND, OREGON

THE DEANS' ANTIQUE
and Elephant Hobby Shop
3 1/2 miles south on Hiway 97
EV 2-0474

EUGENE, OREGON

EDITH M. DROSTE ANTIQUES
China, Glass, Postcards, Paper Items
987 E. 19th Ave. (97403)
DI 4-0208

GREENE'S ANTIQUES*

Rt. 1, Box 634
U. S. 99 - 7 mi. N. of Eugene
On Aubrey Lane (97401)
PHONE: 688-1540

JESSIE HALL ANTIQUES
General Line of Antiques
1817 Garden Ave. DI 5-6605
Turn 1 Blk. at Ford's Drive-In

*See display ad.

EUGENE, OREGON

HAWTHORNE FARM ANTIQUES
Esther Ramsey
McKenzie River Hwy. - U. S. 126 - Vida, Oregon
(36 miles East of Eugene)
Tel. Blue River 822-3422

HARRISBURG, OREGON

GILMOUR'S ANTIQUES*
Antiques for the Home and the Collector
Opposite the City Hall
Ph: 995-6546

HUBBARD, OREGON

ENGLISH'S ANTIQUES*
Route 1, Box 299 - 981-9821
Closed Monday-Tuesday 4 Miles North of Woodburn

JACKSONVILLE, OREGON

OESTREICH'S
709 No. 5th St.—Next to Pioneer Village
Mrs. Carl (Letha) Oestreich
Mailing Address—30 S. Central, Medford, Ore.

RAINIER, OREGON

LOOKOUT ANTIQUES
2 1/2 Miles West of Rainier on Highway 30
China, Glass, Silver & Furniture
Telephone 6-7140 Ross and Irene Nafus

SALEM, OREGON

JACKSON'S RED BARN ANTIQUES
Furniture, Colored Glass, Primitives
Refinishing, Caning, Decorating
6030 Culver Dr. S.E. (97331) - 364-8916

*See display ad.

SALEM, OREGON

KIBBE'S ANTIQUES*

Colored Glass, China, Jewelry

140 - 17th St. N. E.

EM 4-9414

LAMBERT'S ANTIQUES

Fine Furniture and General Stock

124 S. E. Lancaster Drive - 362-7862

John B. Lambert

WAYSIDE ANTIQUE SHOP

Glass, China, Choice Antiques

193 Juedes Ave. N. (Keizer)

EM 4-0710

WARREN, OREGON

THE COUNTRY ANTIQUE SHOP*

1 1/2 miles off U. S. Highway 30

Route 1, Box 275, Warren, Ore. (97053)

Ruth Ellison - Tel: 397-3660

CRAMER'S ANTIQUES

Specializing in Art Glass

Hi-way 30, Warren, Ore. (97053)

Tel: 397-0108

*See display ad.

HILBY'S ANTIQUES

2136 N. E. 42nd Ave.

Tel. 288-2273

Fairy Lamps
Cut Glass

Art Glass
Furniture

Toys

Coins

Colored Glass
Pattern Glass

Lamps

Jewelry

Paper Items

Open 10:00 a. m.
to 5:00 p. m.

Buy
Appraise

Jeanette's Antiques

5925 N. E. GLISAN

Bus. BE6-5852 Res: BE2-8679

Carnival Steins
Haviland Colored Glass
Pattern Glass Bric-a-brac
Lamps Orientals
Cut Glass Hand-painted China
Furniture Dolls

General Line

Open Daily 10-5:00 Closed Sunday
Evenings by Appointment
Discount to Dealers

FIRESIDE ANTIQUES SHOP

Corner 39th at Sandy Blvd. AT 1-8482

Res: BE 4-7617

ART GLASS

FURNITURE

CUT GLASS

LAMPS

PATTERN GLASS

ORIENTAL ITEMS

JEWELRY

STEINS

OLD PEWTER

HAVILAND CHINA

OPEN 10:00 A. M.- 5:00 P. M. DAILY

Evenings Wednesday & Saturday

7:00 to 9:00 P. M.

DISCOUNT TO DEALERS

CATHY'S ANTIQUE SHOP

2425 N. W. Lovejoy Street

PORTLAND 10, OREGON

TELEPHONE 223-1767

10 Minutes from Downtown

Buying Estates and
Individual Pieces

Specializing in Collectors
Pieces at All Price Levels

GOOD SELECTION OF
FRENCH CAMEO GLASS
ORIENTALS AND IMPORTS

Open 12 Noon till 5:00 P. M.
Closed Sunday and Monday
Except by Appointment

CATHY BLOCH

GREENE'S ANTIQUES

RT. 1, BOX 634

U.S. 99 - 7 mi. No. of Eugene
on Aubrey Lane DI 4-7911

American and English Antiques

Cut Glass, Colored Glass, Art Glass

Hanging Lamps, China, Silver

Jewelry and Furniture

Gilmour's Antiques

A Home Full of Antiques

18 MILES NORTH OF EUGENE ON 99E

Cut Glass

Pattern Glass

Art Glass

China

Furniture

Lamps

Appointment or by Chance

353 Smith St.

Phone 995-6546

Opposite the City Hall
Harrisburg, Oregon

The Candelier Shop

1007 SE 12th Avenue Portland 14, Ore.
Bet. Yamhill & Taylor Sts.

Oriental Art

Gen'l Line of Antiques

-- Appraisals --

Open Daily
at 11:00 a. m.
Closed Sunday

VIRGINIA A. THOMPSON

Phone: BE 2-6654

Early American Shop

Specialize in Primitives

FURNITURE and AMERICANA

Sundays by Appointment

ESTHER CRULL
OL. 4-3875

14004 S. E. SCHROEDER
MILWAUKIE 22, OREGON



THE LAMPLIGHTERS CUSTOM MADE LAMPS ANTIQUES

Burnishing - Stripping
Electrifying

Let us Re-Vamp your Lamps

ANTIQUÉ LAMPS-VASES-FIGURINES
OUR SPECIALTY

Bus. BE 5-5157

Res. BE 4-2303

GRACE & HAROLD
WILKINS

2937 E. Burnside
Portland 14, Ore.

KIBBE'S ANTIQUES

OLD FLINT AND SANDWICH GLASS
CUT GLASS, ART GLASS
COLORED GLASS
HANGING LAMPS

CHINA, SILVER AND JEWELRY

Visitors Cordially Welcomed.

Located near

Oregon's beautiful Capitol building

140 17th St. N. E. Salem, Oregon Ph. EM 4-9414

English's Antiques

Beautiful Art Glass - Colored Glass
Cut Glass - Pattern Glass and China
Lamps - Silver - Steins - Bric a Brac
Furniture - Frames - Chandeliers

CLINTON ENGLISH

Hwy 99E - 4 mi. No. of Woodburn
Rt. 1, Box 299-Hubbard, Cre. 981-9821

Closed Monday - Tuesday
Estates bought and sold

HOLLYHOCK COTTAGE ANTIQUES SHOP

MRS. E. G. TSCHANZ
2914 N. E. 50th Avenue
PORTLAND 13, OREGON

GLASS
CHINA
BRASS

COVERLETS
STAFFORDSHIRE
PICTURES

From Fremont St. Open 1:30 to 6 p. m.
Turn So. at 50th Ave Evenings by apptment.
From Sandy Blvd. AT 7-1300, after
Turn No. at 54th Ave. 1:30 p. m.

BAKER'S BRIDGE FARM ANTIQUES CARVER, OREGON

16 Miles from Downtown Portland

American Country Furniture
Pioneer Oregon Primitives
and
Antique Accessories

P.O. BOX 65 Clackamas, Oregon
Phone 658-3563

82nd Freeway to Estacada Cut Off
4 Miles to Carver

Ruth M. Ellison

The Country Antiques Shop

Route 1 Box 275
WARREN, OREGON

1-1/2 miles off US Hwy 30 on Hazen Road
Across from new St. Helens Golf Course
Telephone: 397-3660

GENERAL LINE

Cut glass, colored glass, art glass
hand-painted china
Furniture, copper, brass, primitives
Buy Sell Appraise

Estelle's Antiques

19407 S.E. RIVER ROAD, JENNINGS LODGE, OREGON

10 min. south of Portland on 99E
1 block west on Glen Echo Ave.
1 block south on River Road

Antique Jewelry - Lamps
Glass - China - Silver
Furniture - Etc.

ESTELLE GRADE Appointment Advised
Telephone: 656-4533

TREASURES TO TRIFLES *Antiques & Thingamees*

2¢
DEPOSIT



TODD WILSHIRE
&
PHILIP GAULT

1216 S. E. Belmont
Phone: 235-0547

-FREE POKING-

Grace Gray

Clara Rinearson

Milwaukie Antiques

2016 Jefferson St.

Milwaukie, Oregon

American Antiques our Specialty
We Buy, Sell and Appraise
Visitors Welcomed

Hrs: 10:30 A. M. to 5 P. M. PH: 654-2612
Mon. through Sat.

ONLY SHOP IN DOWNTOWN MILWAUKIE

COLD COMFORT FARM



Antiques

Early American Country Furniture and Accessories

9300 N. W. Cornell Road

Call for appt.

Closed Mondays

Change of Address in the Spring

Dorothy C. Tyrrell

CYpress 2-4936

NON-MEMBER ALLIED SERVICES - - -

ART CRAFT SILVERSMITHS

Established 1914

Repair & Re-plating of all Gold, Silver
Copper, Brass & Nickle

Complete restoration of prized
possessions

Missing trim, knobs, legs and handles
supplied and replaced

Silver, brass and copper polished and
lacquered

All work handled carefully by skilled
workmen

907 SW 9th Ave., near Taylor-Portland 5, Ore.

Phone CA3-0936

Out of town work solicited
Authorized for church work

KALESSE STUDIOS

Mr. and Mrs. J. A. Murphy

RESTORERS OF FINE PORCELAIN
FOR OVER 25 YEARS

OPEN FIRST MONDAY THROUGH
FRIDAY OF EACH MONTH ONLY

522 New Fliedner Bldg.
1017 S. W. Washington St.
Portland 5, Oregon