

The Rocky Mountains Forest Reserve

The area of the Rocky Mountains Forest Reserve is 8,619 square miles. Most of this was set aside by two acts of the Parliament of Canada, one passed in 1887 and the other in 1902. These lands have always been recognized as of major importance for timber, grazing, coal, fish, game and fur. In recent years another resource began to receive attention—water. A few far-sighted gentlemen saw the outstanding value of water from this area in the national economy and their efforts culminated, in 1947, in the establishment of the Eastern Rockies Forest Conservation Board. This agency was set up by agreement between Canada and the Province of Alberta.

This forest reserve together with the Waterton, Banff, and a portion of Jasper National Parks supplies by far the greater portion of the water in the Saskatchewan river. This water is vital to the semi-arid regions of the plains to the east for irrigation, power and domestic or industrial use. It effects the economy of the provinces of Alberta, Saskatchewan and Manitoba.

It is the duty of the Board to protect and manage the Reserve in such a manner that the yield of water will be maintained, particularly the summer flow, and that its quality is assured through the prevention of soil erosion.

USE OF ROADS IN THE RESERVE

The Forest Reserve is open to the public for recreational use whether this be fishing, hunting or merely enjoyment of the magnificent scenery.

A permit (free) is required to enter the Reserve. You may get one at any entrance gate or Ranger Station.

Roads in the Reserve are not designed for pleasure driving. There are few guard rails or road signs. Drive carefully at speeds much below what you are accustomed to and heed all warning signs implicitly—they are placed only where the need is great. You use these roads at your own risk. Roads are narrow, do not use them for parking and guard against running into cattle or game animals on the road.

A few roads and trails in the Reserve are closed to unauthorized traffic. This is done because they were built to low standards and excessive use might make them impassable in the event of fire or other emergency. Sometimes, too, closure is needed to protect the traveller from abnormally dangerous road conditions.

Steep grades and high altitudes in the Forest Reserves cause slightly increased gasoline consumption. Highwood Service Ltd. offers complete Service Station facilities at the Highwood Junction.

BE CAREFUL WITH FIRE

Never throw matches, cigarette or cigar butts, or pipe ashes from a vehicle. Use your ash tray.

Never smoke while walking or riding in the woods. Sit down and enjoy your smoke in a good, safe place—and leave no live sparks behind you.

Camp grounds and picnic places are provided for your convenience. Please use these facilities where proper stoves are provided, rather than camp just anywhere. Failing this, use a gasoline stove rather than an open fire, whenever possible.

If you MUST have an open fire, be very sure to observe the following points:

- Build on rock, gravel, or mineral soil;
- Locate well away from inflammable litter (at least five feet);
- Locate close to a good supply of water at a point sheltered from the wind;
- Before you leave it, be sure that it is out . . . DEAD OUT.

Put out any unattended fire you discover, if you can. In any event report it at the nearest Ranger Station.

HUNTING

The Reserve is a famous hunting ground for big game and sportsmen come from a considerable distance to enjoy the hunt or secure trophies. The elk population is high in some places, Mule deer, big-horn sheep and mountain goats are in fair supply and there are also a considerable number of bear.

Except in the hunting season, the carrying of firearms is discouraged. These is no difficulty about obtaining a permit if you have a hunting license, and the season is open for big game. At other times you must show need for carrying a gun. If passing through the Reserve with firearms which you are not entitled to use, these must be sealed by a Ranger.

For particulars with respect to open season, areas open for hunting, and other regulations consult the local Ranger or write to the Fish and Game Commissioner, Department of Lands and Forests at Edmonton.

FISHING

Fishing for trout in the streams of this Reserve is a very popular sport enjoyed by thousands. In the fall many of these streams are noted for Rocky Mountain Whitefish. Lake trout occur locally.

Not all streams in the Reserve are open for fishing; the pattern of open streams changes each year. Consult a Ranger, a Fish and Game Officer or write the Fish and Game Commissioner for particulars of fishing regulations.

Road Mileages on Trunk Road

COLEMAN-BOW VALLEY SECTION

Read Up		Read Down
136	Coleman	0
134	Reserve Boundary	2
112	Gap Ranger Station	24
107	Junction Northwest Branch Road	29
89	Junction Johnson Creek Road	47
85	Wilkinson Summit	51
69	HIGHWOOD SERVICE CORNER	67
45	Highwood Summit	91
33	Junction Kananaskis Lakes Road	103
17	Kananaskis Ranger Station	119
8	Forest Experimental Station	128
7	Junction Jumping Pound Road	129
1	Seebe	135
0	Provincial Highway No. 1	136

Mileage posts on this road show distances from Coleman.

BOW VALLEY-NORDEGG SECTION

Read Up		Read Down
165	Provincial Highway No. 1	0
149	Reserve Boundary	16
147	Ghost Ranger Station	18
140	Junction Waiparous Creek Road	25
136	Harold Creek Road	29
115	Red Deer River Bridge	50
113	Red Deer Ranger Station	52
86	Junction James River Road	79
73	Clearwater Ranger Station	92
56	Junction Baseline Lookout Road	109
37	South Ram River Crossing	128
16	Junction Meadows Road	149
6	Saskatchewan River Crossing	159
0	Nordegg	165

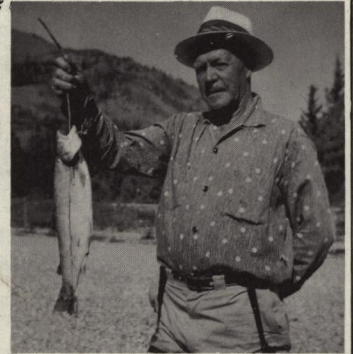
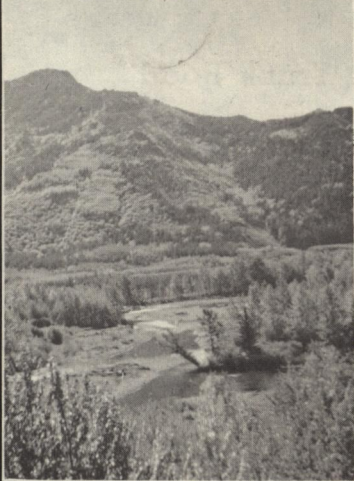
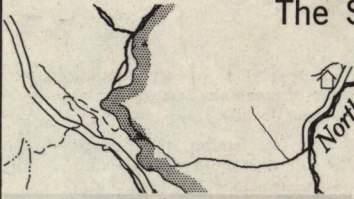
Mileage posts on this road show distances from the Reserve boundary which is 16 miles from No. 1 highway.

DISTANCES BETWEEN PLACES NOTES

	Miles
Along No. 1 highway between junctions with roads going south to Coleman and north to Nordegg	23
Pincher Creek to Castlemount Ranger Station	32
Coleman to Castlemount Ranger Station	23
Lundbreck to Gap Ranger Station	34
Lundbreck to New Porcupine Ranger Station	25
Claresholm to New Porcupine Ranger Station	28
Nanton to Willow Creek Ranger Station	32
Nanton to Junction with Trunk Road	43
Longview to Highwood Ranger Station	26
Longview to Junction with Coleman-Bow Valley Road	28
Black Diamond to Bighorn Ranger Station	21
Calgary to Elbow Ranger Station	36
Calgary to Jumping Pound Ranger Station	35
Jumping Pound Ranger Station to Elbow Ranger Station	42
Jumping Pound Ranger Station to Junction with Coleman-Bow Valley Road	17
Calgary to Junction with Bow Valley-Nordegg Road	32
Sundre to Red Deer Ranger Station	35
Caroline to Clearwater Ranger Station	29
Rocky Mountain House to Nordegg	57
Nordegg to Blackstone River	17
Blackstone River to Chungo Creek	8

COLEMAN - KANANASKIS ROAD

The Scenic Route Between Waterton and Banff National Parks



HIGHWOOD SERVICE

P. O. Box 66

LONGVIEW, ALBERTA

Owned and Operated by ELSIE SNYDER



HIGHWOOD SERVICE TENT AND TRAILER GROUNDS

Midway between Coleman and Seebe at the Junction of the access road to High River, Alta. Hot and Cold Running Water — Toilets — Showers — Electricity — 50-foot Shelter with Cook Stoves, Picnic Tables and Barbecues.

Gas — Oil — Tires — Repairs
Groceries — Meats — Confectionery — Ice
Fishing Tackle — Fishing and Hunting Licenses
High Test Camp Gas — Propane Bottles Filled

Trailer Accommodation Available.

OPEN MAY 15th
To End of Big Game Hunting Season

INTERNATIONAL BOUNDARY