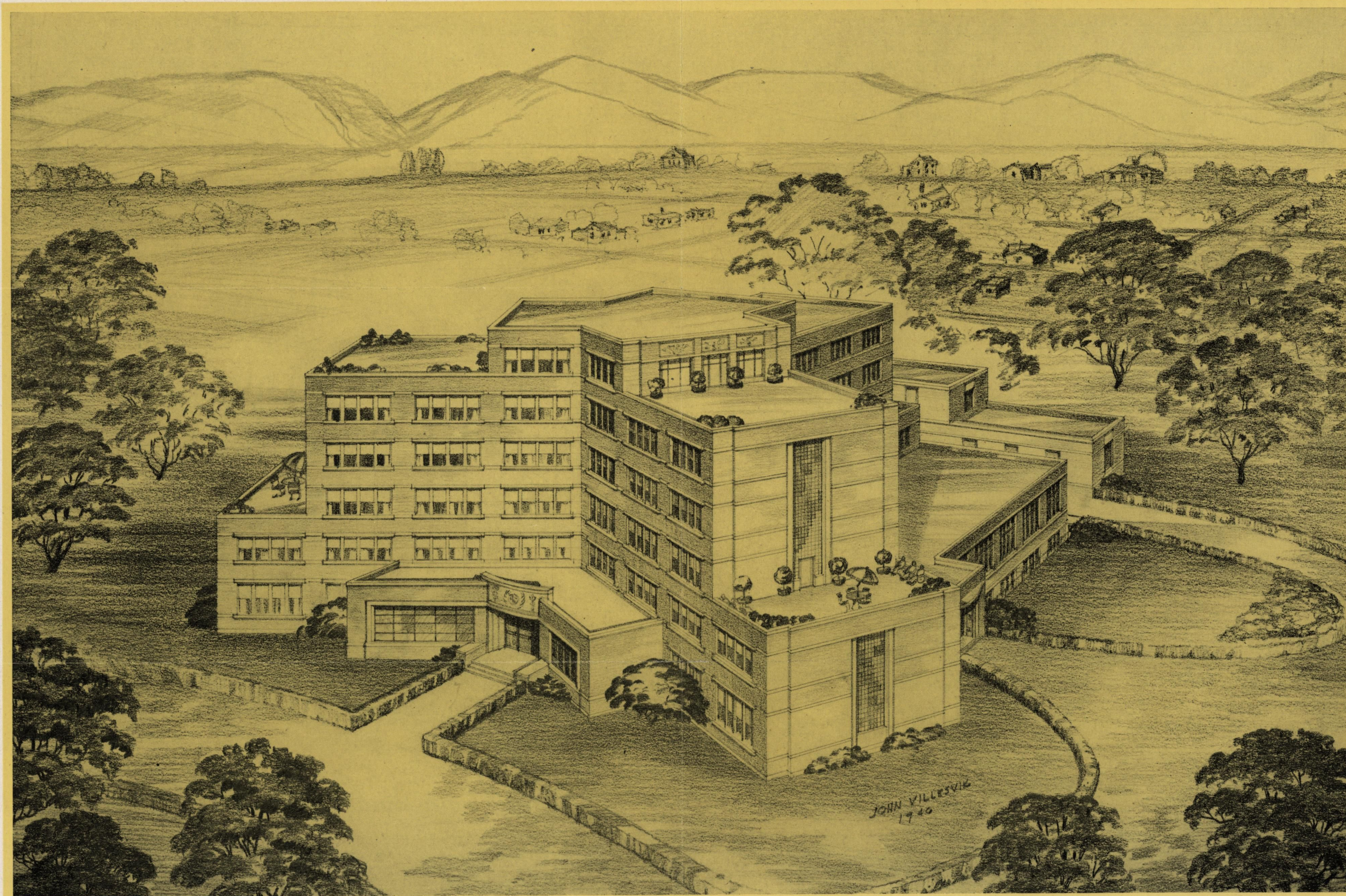




## *How long should this Young American live?*

IN THE MEMORY OF LIVING MAN his chances of seeing forty years would have been less than one out of two. Today he has an even chance of reaching sixty-five. And with the length of life still increasing, the average of his generation may reach the Biblical age of "three score years and ten." For this we are indebted to modern physicians and surgeons, modern hospitals and modern nurses, and modernly-trained parents — especially the mothers.





*Yakima Valley Memorial Hospital*



## *Is the New Hospital Needed?*

FOR ADEQUATE GENERAL HOSPITAL SERVICE the accepted number of hospital beds, excluding nursery bassinets, is four and one-half per thousand population. This standard of general hospital beds is over and above special hospitals such as hospitals for tuberculosis, government hospitals for veterans, and sanatoriums.

Counting every general hospital bed in Yakima County, it will still require the beds and special services contemplated in YAKIMA VALLEY MEMORIAL HOSPITAL to meet the needs. Also the spacious grounds of the new hospital make it possible to expand its facilities as the community grows in population and calls upon it for increased services.

It is a public embarrassment for the sick of Yakima and surrounding communities to be crowded into its hospitals beyond the possibility of good service and the best chance of rapid recovery. To remain in such a situation becomes more than just an embarrassment.

Patients are being overcrowded into rooms to their discomfort and placed in corridors and rooms never meant for the sick. Many needing hospitalization but not in immediate danger are put off until some longed-for lucky day when a bed may be available. Some are sent home earlier than they should be to make room for new ones who could not otherwise be admitted. Private rooms for some patients who should be alone are often not to be had.

Yakima Valley does not have to live on that level of hospital care. The new hospital will bring the desired relief.

## *Will I Use the Hospital?*

ONE PERSON IN EVERY EIGHT in the United States is now becoming a patient in a general hospital each year for childbirth, treatment for injuries resulting from accidents, or acute illnesses; and nearly all go home fully recovered or greatly improved.

Modern medicine, modern surgery, and modern obstetrics are impossible without modern hospitals. Hospitals furnish the facilities with which the doctors work and train internes and nurses who care for their patients.

In critical illness the hospital becomes the sickroom of the home.

The hospital, with its trained staff of workers, saves much precious time for busy doctors. Through the nursing staff the doctor can know any hour, day or night, how his patient is getting along and direct necessary medications, food, and treatments. Family and friend can also call by telephone and get the latest report on the patient's condition.

Modern hospitals are indispensable in modern civilization. There should be enough beds and other facilities to take good care of all who need hospitalization. You may be one of those fortunate persons who has never needed a hospital, but the law of averages sooner or later gives nearly all of us one or more calls.

## *Who Will Own the Hospital?*

EVERY PERSON CONTRIBUTING TWENTY-FIVE DOLLARS OR MORE will be furnished a certificate of membership in the YAKIMA VALLEY MEMORIAL HOSPITAL ASSOCIATION. This Association will be the owning corporation of the YAKIMA VALLEY MEMORIAL HOSPITAL and will elect the trustees, who have the responsibility of seeing that the hospital is properly operated. All members of the Association regardless of the size of their contribution, whether \$25.00 or \$25,000.00 will have equal voting power in the election of the trustees who *serve without pay*.

The service of Yakima Valley Memorial Hospital will extend beyond the borders of Yakima County and this appeal for funds to build and equip it is being presented to all the valley within the Hospital's service area.