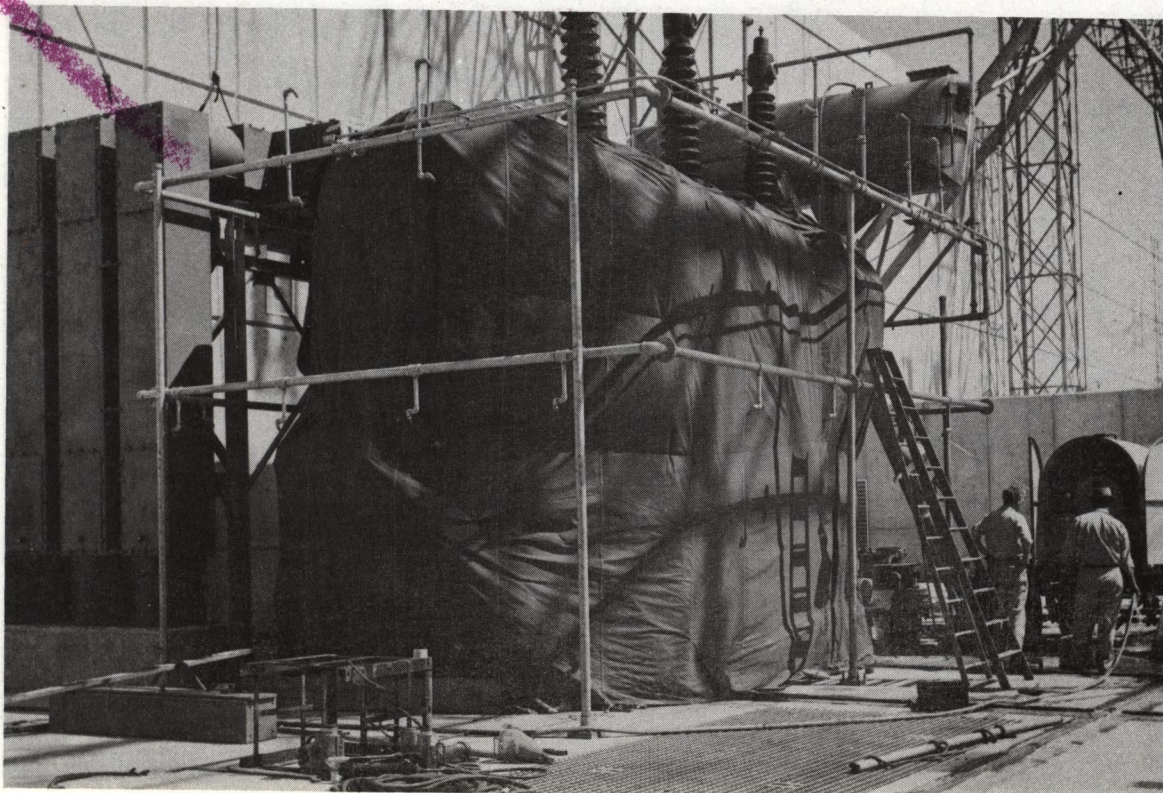
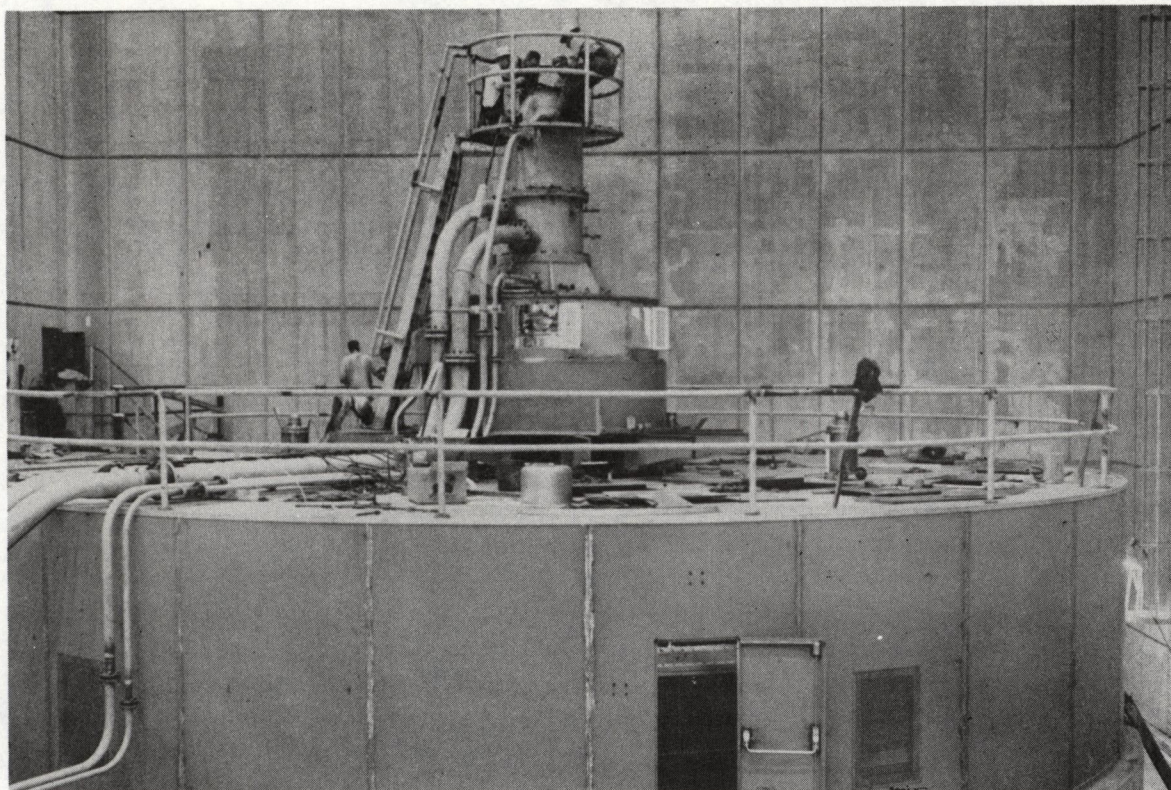


Right (west) bank fish ladder - Operating during total river flow of 457,200 cfs

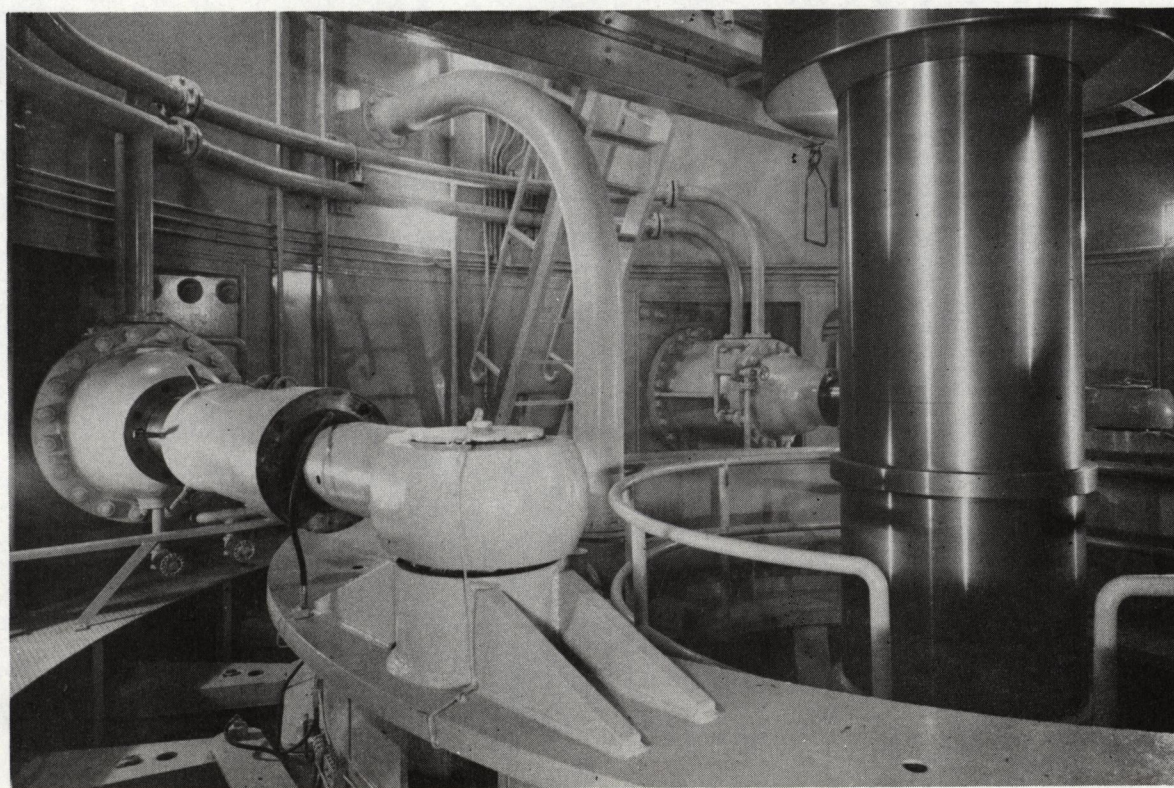
Priest Rapids



Dryout of transformer Serial No. /102 after fire damage



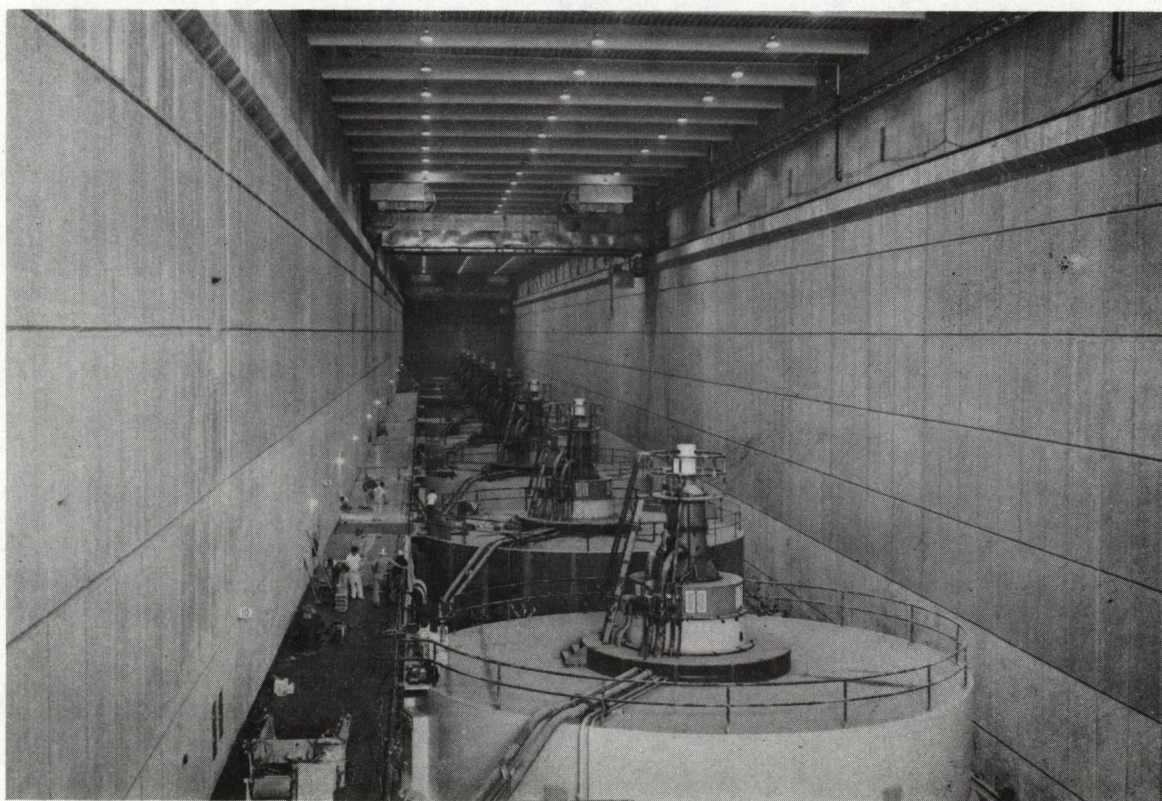
Erection of last unit (No. 1) nearing completion



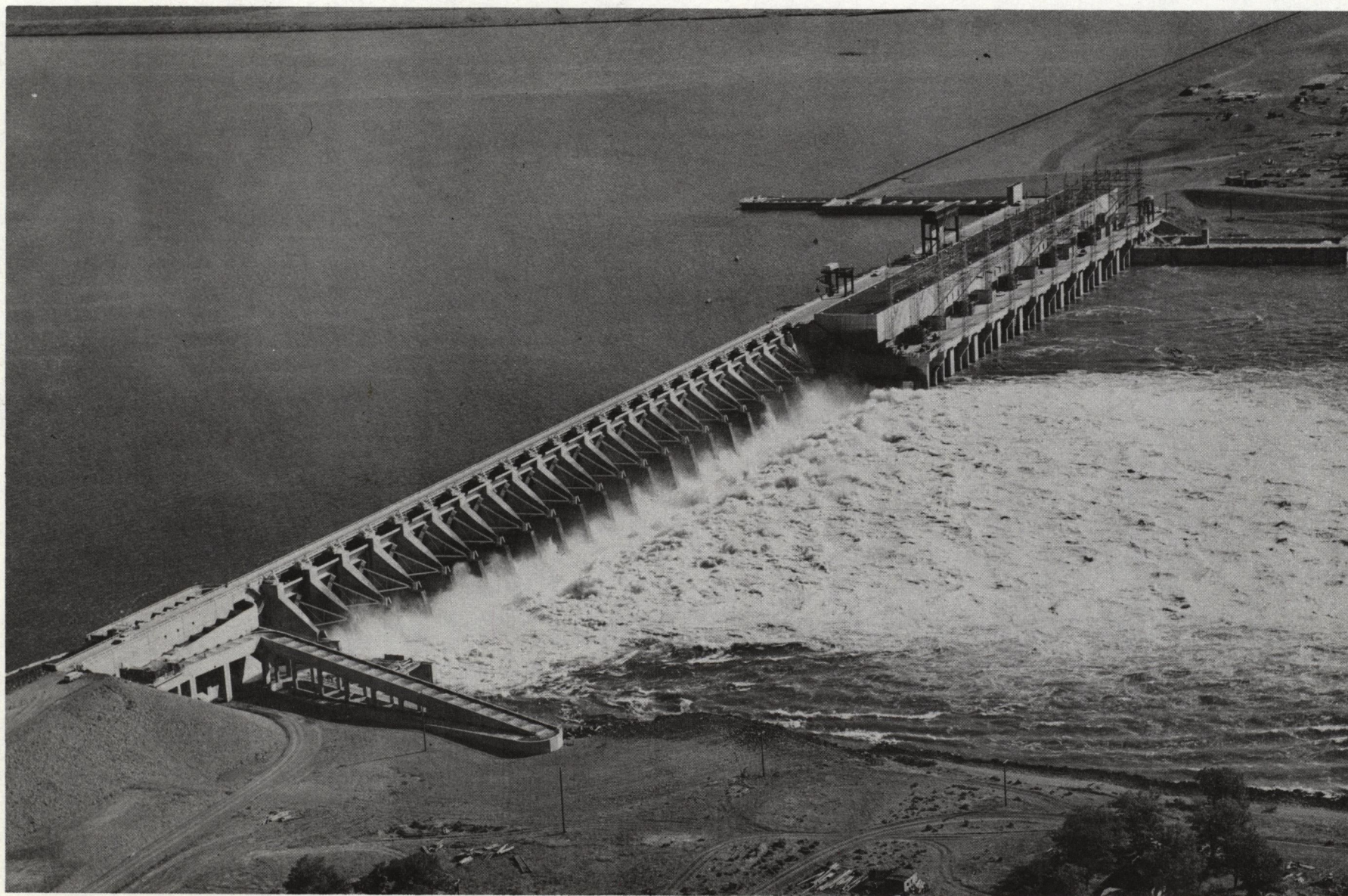
Turbine pit of Unit 2



Powerhouse control room



Generator hall - Balcony floor tile being placed



P-R

General View - Total discharge of 350,000 cfs
(326,000 cfs over the spillway - 24,000 cfs through the powerhouse units)