

\$11  
TAX EXTRA

## ANNUAL EVENTS

Fairbanks Winter Ice Carnival. Gulkana Dog Derby  
 Anchorage Fur Rendezvous. Ketchikan Salmon Derby

# INDEXED TRAVELOGUE

# WATERWAYS

# HIGHWAYS

# RAILWAYS

# AIRWAYS



WIKSTRÖM

Copyright 1946, by Gene Fugitt—Patent Pending—All Rights Reserved

CORDOVA  
SECRET  
KODIAK  
KODIAK  
KODIAK

SCOUT THE EASTERN ALASKA MAP  
AND MAP THE KODIAK SCENICS

RICHARDSON HIGHWAY  
VALDERZ HIGHWAY  
ANCHORAGE GLENN  
ANCHORAGE GLENN  
ANCHORAGE GLENN  
ANCHORAGE GLENN  
ANCHORAGE GLENN

GLENN HIGHWAY  
GLENN HIGHWAY  
GLENN HIGHWAY  
GLENN HIGHWAY

FAIRBANKS TO FAIRBANKS  
 ULLMAN TO ULLMAN





## ALASKA'S FLAG

Eight stars of gold on a field of blue —  
 Alaska's flag. May it mean to you  
 The blue of the sea, the evening sky,  
 The mountain lakes and the flows nearby,  
 The gold of the early sourdough's dreams,  
 The precious gold of the hills and streams,  
 The brilliant stars in the northern sky,  
 The Bear — the Dipper — and shining high,  
 The great North Star with its steady light,  
 Over land and sea a beacon bright  
 Alaska's flag — to Alaskans dear.  
 The simple flag of a last frontier.

Marie Drake

## ALASKA HAS

546,400 Sq. Miles; Wildlife Resources \$100,000,000; Fish, \$64,000,000 Annually; Minerals Mined to Date, \$800,000,000; Furs Taken to Date, \$65,000,000; 25,000 Miles of Waterways; 120 Canneries; 650 Farms; 250,000 Reindeer; \$60,000,000 Bank Resources; Standing Timber, 100,000,000,000 Board Feet.

Wildlife including: Brown, Black, Grizzly and Polar Bear, Moose, Caribou, Reindeer, Mt. Sheep and Goats, Elk, Buffalo, Deer and Wolves.

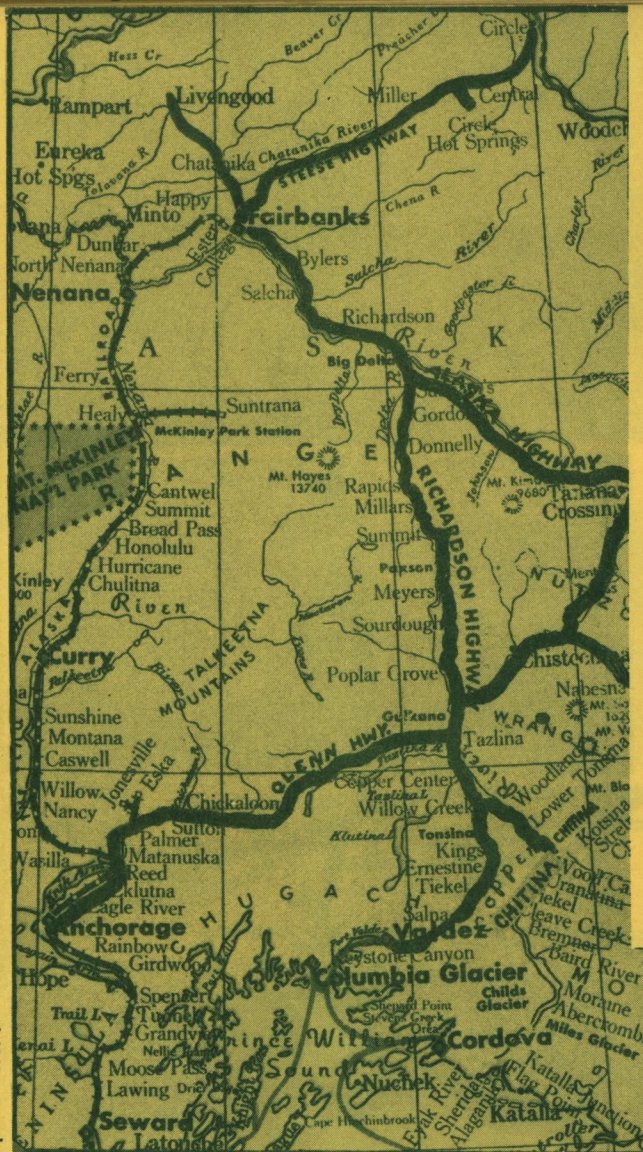
Fur Animals: Mink, Fox, Beaver, Muskrat, Lynx, Martin, Land Otter, Ermine, Wolves, Coyote and Squirrel.

Game Birds: Geese and Ducks, Pheasants, Sage Hen, Ptarmigan.

Fish and Seafood: Whales, Salmon, Trout, Halibut, Herring, Cod, Crabs, Oysters, Clams, Shrimp and Red Snapper.

*There's a land where the mountains are nameless,  
 And the rivers all run God knows where;  
 There are lives that are erring and aimless,  
 And deaths that just hang by a hair;  
 There are hardships that nobody reckons;  
 There are valleys unpeopled and still;  
 There's a land—oh, it beckons and beckons,  
 And I want to go back—and I will.*

—Robert W. Service.



## ALASKA RAILROAD MILEAGE

Seward to Anchorage.....	114
Anchorage to Matanuska.....	36
Matanuska to Wasilla.....	10
Wasilla to Curry.....	88
Curry to McKinley Park.....	100
McKinley Park to Healy.....	10
Healy to Nenana.....	54
Nenana to College.....	55
College to Fairbanks.....	3
<b>SEWARD TO FAIRBANKS.....</b>	<b>470</b>

ALASKA RAIL & HIGHWAY SYSTEM

JUNE AU HAINES

SWIRETCH  
 TACKLE  
 AGEL  
 L  
 PESTO  
 TURSH  
 BEA  
 URS  
 GT  
 ERN  
 ALASKA  
 MAP



# ALASKA HIGHWAY MAP



# THE BOARD OF TRADE



40 Years of Friendship

## REFRESHMENTS

Finest in liquors and wines

JOE V. BALDRIDGE and  
ARVO SAARIO

NOME, ALASKA

# LINCOLN HOTEL

Where the Sourdoughs Meet

AN OLD LANDMARK

Bar in connection

EMILE LAURIN, Prop.

NOME, ALASKA

## MODERN CLEANERS

PAUL A. MANDEVILLE

6 Hr. Service for Travelers

NOME, ALASKA



## NOME

On the shores of Bering Sea with a population of 2500. Headquarters of Second Territorial Division. On Seward Peninsula, famous as sight of gold rush days and today a thriving mining town, 22% of all gold mined in Alaska came from Seward Peninsula. Modern buildings, stores, churches, and schools. Auto Agencies, Airplane service shops and air fields. Charter Air service for tourists and business men. Clubs, lodges, theatre, communication system, bank and a semi-weekly newspaper. Does an annual business of \$5,000,000. Big game includes Polar bear, walrus, wolves, rabbits, reindeer and Grizzly bear. 500 miles west of Hawaiian Islands.



## U. S. MERCANTILE CO.

Eskimo Arts and Crafts Dealers since 1900

Whalebone, Walrus Ivory — Seal Skins — Polar Bear Hides — Raw Lashings  
Mukluks — Fur Parkas — Ivory Curios — Arctic Furs — Dried Salmon — Seal Oil  
Rifles — Ammunition — Hardware. Catalogue upon request.

Farther West than Honolulu

Nome, Alaska

NOME  
JUNE 1911  
SWEET'S  
ALASKA  
MAP

HAINES  
PES TO EU RT SH BE UA RS GT ER N ALASKA MAP





PHOTO BY  
PILOT-BOB RICE

## WIEN ALASKA AIR LINES

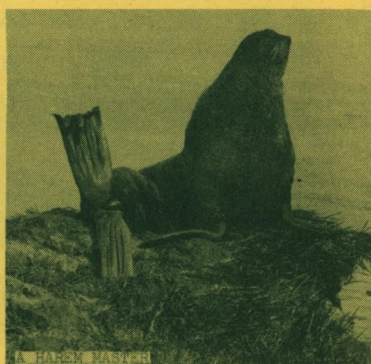
Pioneered by Sig and Noel Wien. Alaska's first Air Line. Passengers, express and mail. Vacation trips to any point in the North. Carrying mining equipment and supplies. Twin-Engine Transports, Single Engines.

NOME

ALASKA



GOLD DREDGE NEAR NOME



HAIRY MASH

## POLAR CURIO SHOP



Ivory—Alaska Gold  
Gifts—Souvenirs  
Jewelry  
Watches—Diamonds

GEO. MADSEN and  
KEITH HEDREED, Props.

NOME, ALASKA

## WALLACE HOTEL

On the shore of the  
Bering Sea  
NOME, ALASKA

## THE GLUE POT

Ice Cream—Pints or Quarts  
Candy—Soft Drinks  
TOBACCOS  
NICK SIMEON, Prop.  
NOME, ALASKA

## NOME LAUNDRY

Personal and family service

JOE AMAROK, Prop.  
Main 29 NOME, ALASKA



DEDMAN'S

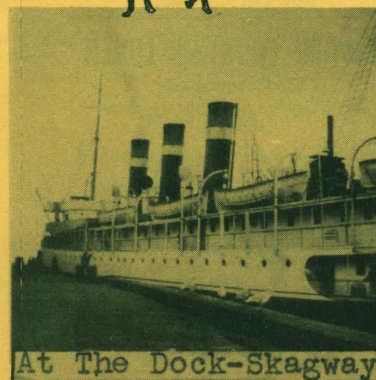
## SKAGWAY

Northern Port on Inside Passage.  
Southern Terminus of White Pass and  
Yukon Railroad running to Whitehorse.  
Headquarters for Tourist travel into  
interior of Yukon and Alaskan Territor-  
ies. Scenic Attractions: Dahlia Gar-  
dens, Grave of Soapy Smith, (Early day  
Desperado) Reid's Falls, Smuggler's  
Cove, Lower Lake Dewey and Black  
Lake. Here you start on a 10 day trip  
to the historic spots of the Klondike  
Gold Rush that made Dawson and Rob-  
ert Service Famous.



LAKE BENNET B. C.

Dedman's



At The Dock-Skagway

## DEDMAN'S PHOTO SHOP



Films, Cameras  
Postcards  
Kodachrome Slides  
Alaskan Scenics  
Photo Supplies  
Alaskan Souvenirs  
SKAGWAY, ALASKA

SKAGWAY

JUNEAU

SWIRTA  
KNAG  
ELE  
LAN

NOME

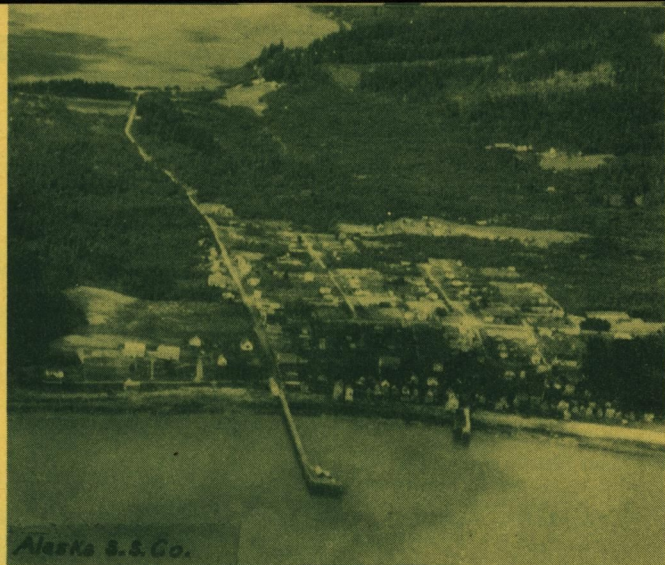
HAINES

PES  
TOUR  
SHBE  
URST  
GTER  
N

ALASKA

MAP





Alaska S.S. Co.

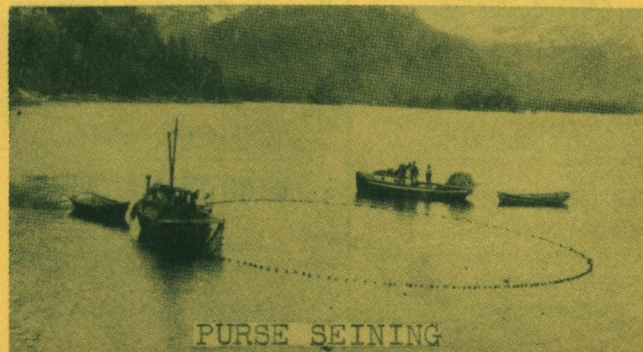
## HAINES

Southern Terminus of Haines Cut-off. 145 miles to Alaska Highway, where a left turn will mean Fairbanks and on to Circle City, while a right turn could land you in New York or San Francisco.



HAINES HIGHWAY

THE CONNECTING LINK WITH SOUTHEASTERN ALASKA.



PURSE SEINING



310 Juneau, Alaska Looking West

## JUNEAU

Territorial Capital of Alaska, on Gastineau Channel, in Southeastern Alaska. A beautiful modern city of 5000 population. Headquarters for most of the Federal and Territorial agencies. Has large sawmills, canneries, cold storage plants and one of the largest quartz gold mines in the world. Headquarters for sportsmen and big game hunters. Large stores and shops for the tourist and traveler. Excellent hotels and restaurants. The large and well kept Museum is located in the Federal building. Has daily newspapers with leased wire service and Weekly News-Letter issuing news on business trends. Radio station, a large air port, buses, cabs, charter boats and planes.

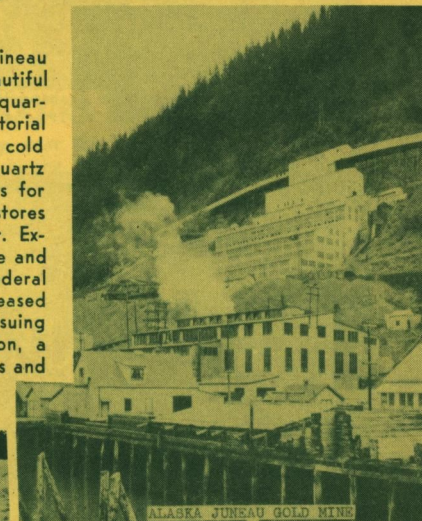


Mendenhall Glacier

Winter No Pond Photo



Lumber Mill  
Southeastern Alaska



ALASKA JUNEAU GOLD MINE

## THE NUGGET SHOP

Largest Collection of  
Native-made Baskets

Totem poles, Eskimo carved ivory, Eskimo made fur parkas and garments. Moccasins, mukluks, diamonds, watches, natural pure gold nugget jewelry.

Sidney Lawrence Paintings

Alaskan Books

Photos, Novelties

JUNEAU, ALASKA

J  
U  
N  
E  
A  
U  
  
S  
W  
I  
T  
Z  
E  
R  
L  
A  
N  
D

H  
A  
I  
N  
E  
S

P  
E  
S  
T  
O  
U  
R  
T  
S  
H  
B  
E  
U  
R  
S  
T  
E  
R  
N  
A  
L  
A  
S  
K  
A

M  
A  
P



# Sitka Music AND Electric Store

Alaskan Curios  
Novelties and Jewelry  
Tourist Headquarters

Rent a Bicycle and tour  
Totem Pole Park

Apartments for rent  
CLARENCE R. RANDS  
SITKA, ALASKA

# PHOTO SHOP STUDIO

"HOUSE OF PICTURES"

Largest Display of Views and  
Postcards in Alaska  
Cameras, Film  
Photographic Supplies

"The Land of Scenic Beauty"

SITKA, ALASKA



Sitka

Mercantile Co.



Fancy-Staple Groceries  
Meats  
Commercial Fishing Gear

Sitka, Alaska

TILSON & SON



Men's Furnishings  
Supplies for Sportsmen  
Hardware  
Hunters' Headquarters

SITKA, ALASKA



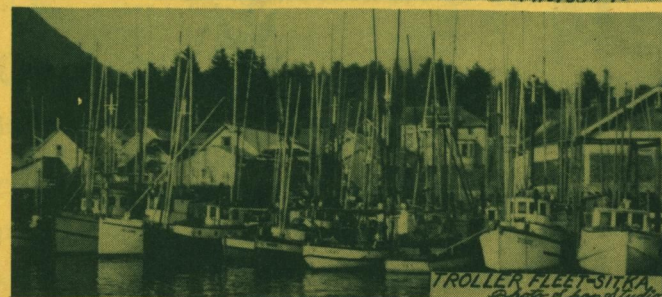
SITKA

1335 miles Northwest of Seattle on the Baranof Island with a population of 1800, lies the beautiful city of Sitka, steeped in historical interest.

Not only is it a processing center for Salmon, Halibut and other varieties of seafood, but it also has large timber resources nearby.

Its sportsman and tourist attractions are many including fishing for Rainbow and Cutthroat trout and salmon, hunting ducks, geese, grouse, ptarmigan, deer and brown bear, Mountain climbing and boating.

Don't miss visiting Sitka Hot Springs, Lover's Lane in Sitka National Monument with its many beautiful totem poles and many other points of historical interest nearby.



SW  
IRE  
TA  
KN  
AG  
E  
L  
A  
N

P  
E  
S  
T  
O  
U  
R  
T  
S  
H  
B  
E  
U  
A  
R  
S  
G  
T  
E  
R  
N

A  
L  
A  
S  
K  
A

M  
A  
P





## PETERSBURG

Population 1600. On Mitkof Island, north end of Wrangell Narrows on Inside Passage. Home of large salmon trolling and halibut fleets. A cold storage plant, salmon cannery and crab and shrimp cannery. Lumbering; University of Alaska Fur Farming Experimental Station is located here. City owned hydro-electric light and power plant. Modern schools, stores and shops, restaurants, and hotels. Small boat harbor and machine shops. Sport fishing, hunting and boating. Petersburg Air Service to all Southeastern points. Regular scheduled boat service.

## PETERSBURG AIR SERVICE

TONY SCHWAMM, Pilot

*Serving Southeast Alaska*

Passengers — Mail — Express — Two Way Radio

Ambulance Equipment — Seaplanes

Charter Trips — Hunting — Fishing — Mining

Operating radio ground stations in Wrangell and Petersburg  
PETERSBURG, ALASKA



## DEDMAN'S PHOTO SHOP



Films, Cameras

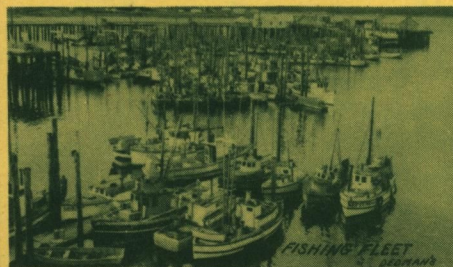
Postcards

Kodachrome Slides

Alaskan Scenics

Photo Supplies

PETERSBURG, ALASKA



## WRANGELL

859 miles, by way of the Inside Passage, from Seattle is Wrangell with a population of 1400. City owned water, light and power. Small boat harbor, air field, four canneries, two ship yards and two machine shops. Large dock and cold storage plant. Truck farming.

Fishing and trapping; halibut, salmon, trout, ducks, geese, beaver, fox, mink, ermine, martin, moose, bear. Saltries, lumber, pulp mill sights and gold mining. Where you photograph the bear as they fish. Gateway to Stikine River which is navigable for 160 miles into the B. C. wilderness. A haven for big game hunters, sportsmen and trappers.



WR  
R  
A  
N  
G  
E  
L  
A  
N

P  
E  
S  
T  
O  
U  
R  
T  
S  
B  
E  
U  
A  
R  
S  
G  
T  
E  
R  
N

A  
L  
A  
S  
K  
A  
M  
A  
P







## KETCHIKAN

### The Salmon Capital of the World

Population 6000. 775 mi. N. W. of Seattle. Incorporated. Assessed Val. \$10,000,000. 117 Retail and 8 Wholesale establishments. Bank clearings approximately \$5,000,000. Modern grade and high school. Hospital. Municipally owned public utilities. Modern stores and gift, photo, jewelry and curio shops await the tourist. Four air lines handle local air travel. Taxi cabs meet all boats, and arrange for scenic trips.

Although Salmon fishing and canning ranks first in major industry there are lumber manufacturing, fresh and frozen fish packing plants, mining, boat building and repair; ice, bait and cold storage plants; fish oil meal reduction plants; brass foundry, oar manufacturing; dairy products; mink farming and trapping. Five steamship cos. handle approximately 40,000 passengers to and from Alaska. Guide service; air-plane and yacht chartering plays an important part here.

Two daily newspapers, a sports magazine, and a broadcasting co. keeps everyone informed on local, national and sports news.

Largest Totem Pole park in the world. Tourist attractions. Trapping and big game hunting. Offers many and varied opportunities for those seeking a new and undeveloped land. Needs housing accommodations badly. Write the Chamber of Commerce. Wire your reservations.



### Fishing Fleet In Thomas Basin And Ketchikan Spruce Mills



When in Ketchikan see us  
for your flower needs  
"Say It With Flowers  
and Music"



## Rand's Flower and Music Shop

204 Main St.  
KETCHIKAN, ALASKA



### BOB WIKSTROM

Bob Wikstrom designed and sketched the covers for our Alaska Indexed Travelogue shortly before departing for the Art Center School at Los Angeles, which he is now attending. Bob was born in Ketchikan, Alaska and is a graduate of that High School where he majored in Art. His many friends are happy to know that he is now where his heart has always been.

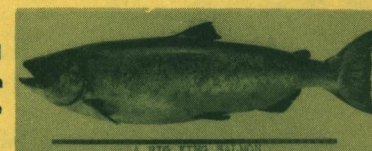
## RYUS DRUG STORE

Adjoining Alaska SS Dock



Sundries—Tobaccos  
Magazines—Books  
Alaskan Postcards  
Drugs and Toiletries  
Canadian Pacific Agency

KETCHIKAN, ALASKA



## BLUE FOX CAFE



Alaska's Leading Restaurant

Headquarters for the  
Discriminating



AL LACOSSE, Prop.  
KETCHIKAN, ALASKA



## SHAMROCK BAR LIQUOR STORE



Choice Liquors, Wines  
and Beers

THOMAS BASIN HARBOR

217 Stedman St.  
KETCHIKAN, ALASKA



K  
E  
T  
C  
H  
I  
K  
A  
N  
  
S  
O  
U  
T  
H  
E  
A  
S  
T  
E  
R  
N  
A  
L  
A  
S  
K  
A

M  
A  
P





HERRING—FROM BOAT  
TO QUICK FREEZE



Seining For Herring



S.S. Baranof—Columbia Glacier



SAXMON PARK  
Near Ketchikan



Purse Seining For Salmon  
Near Ketchikan

Dedman's



Cannery  
Near Ketchikan

Dedman's



## ENGAGE A GUIDE

A Registered Guide is required for all non-residents hunting big game in Alaska. Prospective hunters should contact one or more in advance. A list of Licensed Guides follows.

### ANCHORAGE

Adams, John Q.  
Anderson, Carl  
Branham, E. G.  
Collins, Grenold  
Elwell, Lewis M.  
Gay, Ward I.  
Hancock, Lee  
Hunt, William E.  
Judd, Fred C.  
Morgan, Victor  
O'Dale, Tom  
Parker, E. W.  
Pennington, Lloyd L.  
Rising, F. W.  
Tousley, C. C. "Dick"  
Vogel, Oscar H.

### COOPERS LANDING

Nelson, George B.

### CORDOVA

Chase, Will H.

### FAIRBANKS

Buzby, Bob  
Cripe, Calvin  
Warren, Jack

### HEALY FORKS

Colvin, John

### HOMER

Hersee, Ted

### JUNEAU

Harris, Frederick B.  
Harris, W. John  
Ober, Oscar

### KASLOF

Berg, Emil

### KETCHIKAN

Anderson, K. A.  
Kinnan, Arthur H.  
Wilkins, Warren M.

### KODIAK

Cannon, W. "Pat"  
Madsen, Alf  
Madsen, Chas.  
Metrokin, Eli

### LAKEVIEW (via Seward)

Revell, Frank S.  
Simons, Andrew A.

### MOOSE PASS

Bolam, Alex

### PETERSBURG

Philbin, D. O.  
Wooten, Ralph E.

### SEWARD

Henton, Fred A.  
Hornor, M. A.

### SKWENTNA

Shellabarger, Max

### UNGA

Peterson, Allan L.

### WRANGELL

Ellis, Lee

### YAKUTAT

Mallot, Jay B.

## LICENSES

RESIDENT—Fishing \$1; Hunting \$2; Trapping \$3.  
NON-RESIDENT—Hunting, Trapping and Fishing, \$50.  
ALIEN—Special Hunting, Fishing and Trapping, \$100.

## WATERWAY DISTANCES

### SEATTLE TO:

Ketchikan ..... 757  
Wrangell ..... 859  
Petersburg ..... 907  
Juneau ..... 1033  
Haines ..... 1137  
Skagway ..... 1153  
Sitka ..... 1335  
Cordova ..... 1559  
Valdez ..... 1686  
Seward ..... 1856  
Kodiak  
(via Seward).....2060  
Nome .....2621  
St. Michael .....2623

Ketchikan to Wrangell..... 89  
Ketchikan to Sitka..... 280  
Wrangell to Petersburg ..113  
Petersburg to Juneau.....108  
Juneau to Skagway.....126  
Juneau to Sitka.....200  
Juneau to Yakutat.....216  
Yakutat to Cordova.....224  
Cordova to Valdez..... 93  
Valdez to Seward.....170  
Seward to Kodiak.....200



**Hunt Alaska Big Game**

With gun or  
Camera



Moose Sheep

Caribou Goat

Black Brown

Bear Bear

Kodiak Bear a Specialty



Sport Fishing and  
Charter Trips

(PAT) W. CANNON

Registered Alaska Guide



GIANT KODIAK BEAR  
PHOTO BY FREYMUELLER

P.O. Box A 33

Kodiak, Alaska



COOKING SALMON

Freymueller



SPRUCE TIMBER-KODIAK IS.

## KODIAK MERCANTILE CO.

CARL W. PAJOMAN, Owner

"Where Your Dollars Have  
More Cents"

Electric Appliances

Auto Supplies

AGENTS

Ford - Evinrude - Dupont

Radio Sales and Service

KODIAK, ALASKA

**THE CASINO**

Steaks and Fried Chicken

Sea Foods—Sandwiches

Cocktails

Centrally Located

KODIAK, ALASKA

**NORTHLAND PHOTO SERVICE**

Eastman, Bell & Howell, Argus,

Anso, Graflex, etc.

Scenic Views—Photo Finishing

"In the heart of the Big Kodiak  
Bear Country."

KODIAK, ALASKA

**ISLAND FOUNTAIN**

"Deliciously Different"

Most modern fountain and ice cream  
factory. Supplying leading restaurants  
of the city.

KODIAK, ALASKA

## KODIAK VARIETY STORE

Carved Ivory

Eskimo Made Moccasins

Pillow Tops

Map of Alaska Tablecloths

Postcards, Alaska Pennants

Complete stock of

Fishing Tackle

Largest Variety Store  
in Alaska

KODIAK, ALASKA



Kodiak School

## BEACHCOMBER'S CLUB

Mixed Drinks

Chicken and

Steak Dinners

Dancing

KODIAK, ALASKA



BEATING A SALMON TRAP-KODIAK Freymueller

Discovered on Sept. 8, 1763, Kodiak Island is about 120 miles long and 60 miles wide.

The eruption of Mt. Katmai in 1912 covered the northern half of Kodiak Island with a blanket of ashes many feet deep and even today, under the lush growth of grass, ashes four to six inches deep can be found.

Katmai National Monument (inaccessible to tourists) contains the largest and most awesome group of associated volcanic phenomena to be seen anywhere in the world.



Beach Seining for Salmon

Alaska S.S. Co. Photo





## KODIAK

Kodiak with a population of about 1200 is located on the Northeast corner of Kodiak Island, "Alaska's Sunshine Isle." About 2000 miles from Seattle by steamer, it is known the world over for its huge bear, the largest carnivorous animal in the world.

Its main source of income, like most of the other small towns of Alaska, is from the processing of seafoods which include salmon, cod, herring, halibut, king crab and other varieties. Over a dozen salmon canneries alone are scattered around the Island with Kodiak serving as supply center.

Kodiak is a wealthy little town with a current tax evaluation of over two million dollars. Contributing no small part to this wealth are the dairy farms and cattle and sheep ranches on Kodiak and adjacent Islands. Soon to be built, a cold storage plant will also add much to the economic growth of the town.

Due to the construction of the Kodiak Naval Air Station about five miles from town, Kodiak has enjoyed a boom during the war years but is now settling back into a more routine way of life.

Modern in every sense of the word, Kodiak has its own water and sewage systems, REA electrification, and will soon have a modern automatic telephone system.

Twin engined planes maintain a weekly schedule of four flights to the mainland. Kodiak is also served by a radio station and newspaper with leased wire facilities.

Besides hunting the Kodiak Bear, the sportsman can fish the many varieties of trout which abound in the streams of the Island. A trip to Katmai National Monument and the Valley of Ten Thousand Smokes is one never to be forgotten by the sportsman who has the stamina and time to undertake it.

Other interesting side trips may be taken to visit old historical Russian settlements and other places of interest around the Island.

A temperature and equitable climate, an excellent harbor and central location, bid fair to make Kodiak the commercial center of the North Pacific area.

## WODLINGER DRUGS

Two Stores

"THE ONLY  
DRUG STORES  
IN THE  
ALEUTIAN AREA"

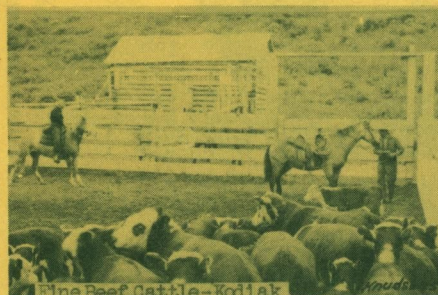
KODIAK, ALASKA

## CLUB LIQUOR STORE

RAY MARTIN, Owner

Wines—Liquors—Beers

KODIAK, ALASKA



## JACK'S CAFE

At Tony's Bar

JACQUE PARDIEU, Prop.

KODIAK, ALASKA

Idle Time??

Then make it

## THE IDLE HOUR BAR

MAX LA LANDE, Prop.

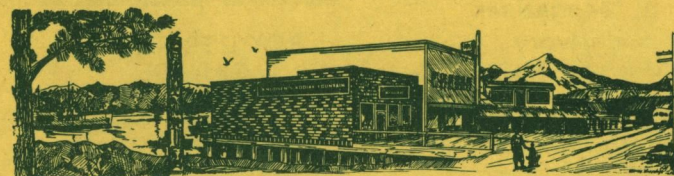
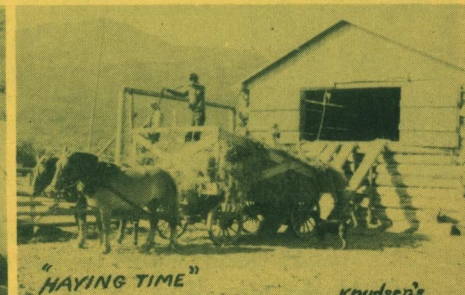
KODIAK, ALASKA

## KODIAK CLEANERS

EMMET JENNINGS

P. O. Box 247

KODIAK, ALASKA



## KNUDSEN'S AT KODIAK

Have many useful, interesting and decorative items for the discriminating buyer of Alaskan gifts and curios.

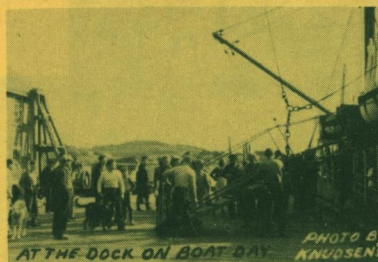
Just to mention a few: Ivory, parkas, mukluks, polar bear rugs, fox furs, baskets, moccasins, map of Alaska table cloths, Eskimo dolls, Alaskan books, canned salmon (12 to a box).

Send for our new catalogue of Alaskan Gifts

Box 77 E, KODIAK, ALASKA

Be sure to include Kodiak on your trip to Alaska.





## VICTORY CAFE



Dining Room, Booths  
and Stools

AL MILLER, Prop.  
FRED C. MILLER, Chef

P. O. Box 1156

KODIAK, ALASKA

## BANK OF KODIAK

Financial Statement as of Dec. 1, 1945

### RESOURCES

Cash and due from Banks.....	\$ 516,309.67
United States Bonds .....	1,230,453.61
Municipal Bonds .....	13,597.98
Loans .....	266,466.34
Banking House, Fur. & Fix. ....	48,243.05
Other Assets .....	1,628.69

\$2,076,699.34

### LIABILITIES

Deposits .....	\$1,907,083.20
Capital Stock .....	60,000.00
Surplus .....	60,000.00
Undivided Profits .....	22,629.67
Reserves .....	22,986.47

\$2,076,699.34

## YUM YUM CAFE

"When in Kodiak, if it's good eatin'  
you're missin', it's because you are  
missin' that YUM YUM specialty"

CAMILLA C. WIER, Prop.  
KODIAK, ALASKA

## CITY MARKET

L. J. WHITTINGTON

Quality Meats  
KODIAK, ALASKA

## CLUB UNIQUE

"Home of Moose Milk"

BUD METZGAR, Prop.  
KODIAK, ALASKA

## B & B BAR

Established 1899



First Bar on Kodiak Island

Drinks, Pool, Billiards  
Dance Hall

JESS AND GEORGE BLINN

KODIAK, ALASKA



## THE MECCA

KODIAK, ALASKA  
See our beautiful  
Cocktail Lounge."

ROY SNYDER,  
Owner

## THE MECCA

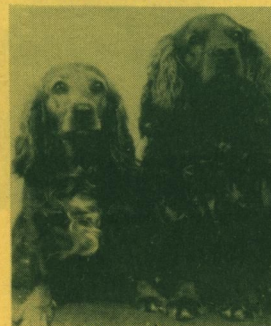
FAIRBANKS, ALASKA  
"Where discriminating  
people gather."

ROY SNYDER and  
JOE MAINELLA



## THE MEN'S STORE

R. D. RUSSELL, Prop.



Mr. and Mrs.

PENNY & RUSTY  
KODIAK, ALASKA

"The Home of the Kodiak Bear"

## RHOADES FURNITURE STORE

"Pleasing you keeps us  
in business."

W. RHOADES, Prop.  
KODIAK, ALASKA

## CHEECHAKO GRILL

"Home Cooking our Specialty"

VIVIENNE CLASON, Prop.  
KODIAK, ALASKA

## KODIAK AIR SERVICE

Serving Kodiak and  
Afognak Island Groups  
CARL E. MARTIN  
P. O. Box 1144  
KODIAK, ALASKA











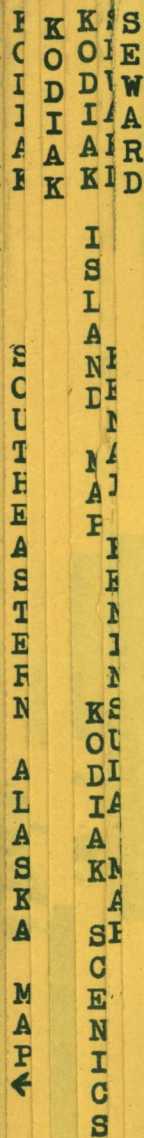


PHOTO BY E. BEDFORD

## SEWARD

Gateway to Kenai Peninsula, southern terminus of Alaska Railroad, northern terminus of the Alaska Steamship Co. A modern city with up-to-date stores, shops, hotels and restaurants, movie theatre, bank, laundries, cleaning plants, Air field, hospital, schools, churches, small boat harbor, canneries, machine shops, auto sales and service, clubs, lodges, chamber of commerce and newspaper with leased wire services.

Headquarters for big game hunters. Home of the Kenai Moose. Largest variety of big game animals in Alaska. Excellent highways to beautiful lakes and streams.



THE LOOP DISTRICT-ALASKA R. R.



KENAI LAKE

**CORN FORT**

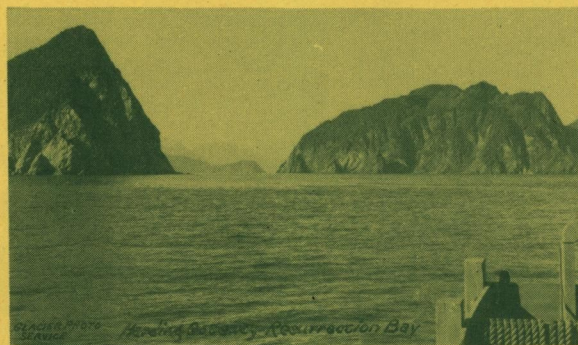
## KENAI ROD AND GUN CLUB

Shackleford Bay on Kenai Lake

Three Camps—Skilak Lake, Cooper Lake and Upper Russian Lake. Special 5 day trip from Seward. (Only \$100 each to parties of three or more.)

On to Anchorage by plane.

Write P.O. Box 365, Seward, Alaska for full details.



# Glacier Photo Service



E. BEDFORD and G. McCREARY

## Retail and Wholesale

Alaska Photos are true  
souvenirs—Complete Selec-  
tion of Alaskan Scenics

Box 396

SEWARD, ALASKA





## CORDOVA

A fishing and cannery town on the East shore of Prince William Sound. Population 2000. Salmon, clam, and crab canneries and herring packing plants are the chief industries. 12 canneries pack 570,000 cases of salmon per year. 3 crab canneries pack 6,600 cases per year. 400 boats anchor in the small boat harbor which cost \$295,000 to build.



Salmon Cannery Near Cordova



CORDOVA PHOTO SER.

## CORDOVA AIR SERVICE

CORDOVA, ALASKA

Service to: (Route 1) Valdez, Chitina, Copper Center, Anchorage, Prince William Sound Points, Gulkana, Gakona, Chestochina, Nabesna, Chisana, McCarthy, Rapids, Big Delta, Fairbanks. (Route 2) Valdez, Prince William Sound Points and Anchorage. (Route 3) Katalla, Yagata. Service Hunting, Fishing Parties; floats, skis, wheels.

Offices—Valdez, Anchorage, Fairbanks



PHOTO BY CORNFORTH

## THE IMPERIAL

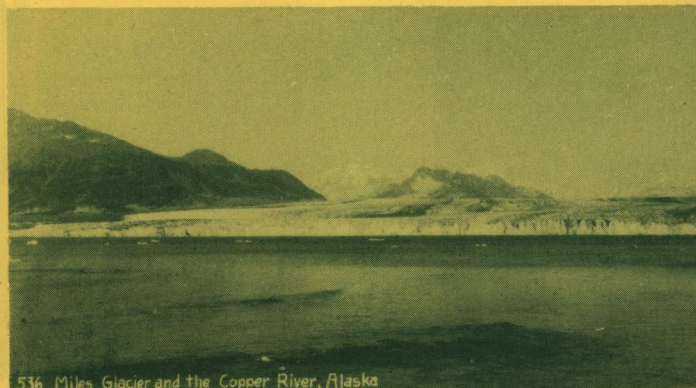
Recreation — Refreshments

R. W. "BOB" KORN



CORDOVA

ALASKA



536 Miles Glacier and the Copper River, Alaska

## CORDOVA DRUG CO.



A friendly drug store  
in a friendly city

## THE REXALL STORE

CORDOVA, ALASKA

## NORTHERN HOTEL

50 Rooms — Down Town  
Popular Prices  
Deep in the Heart of the Fish Industry  
MYERS & OBERMEYER, Props.

CORDOVA, ALASKA



## CRYSTAL LIQUOR STORE

FINE WINES, LIQUORS, BEERS  
Rooming house in connection  
O. M. STROM, Prop.  
CORDOVA, ALASKA

## CORDOVA STEAM LAUNDRY

Woolens Our Specialty  
Pickup—Delivery Service on  
Mondays, Saturdays  
MR. AND MRS. C. W. IHRIG  
Phone 66 Cordova, Alaska



## Windsor Hotel

W

Where the  
"Alaska Spirit Abounds"

100 Rooms with bath

20 Apartments

Friendly, Comfortable

\* \* \*

CORDOVA, ALASKA



### CORDOVA

By HELEN JACKSON

Cordova High School Senior  
Tucked snugly at the foot of  
snow-plushed Eccles Range  
overlooking a bay of aqua-blue  
and surrounded by spruce covered  
mountains, lies the picturesque  
town of Cordova.

## ROSSWOG'S



For:

Alaskan Books

Moccasins — Slippers

Alaska Stationery

Ivory Curios

Postcards



Genuine Gifts from the North

## HARVEY'S CAFE GOOD FOOD COURTEOUS SERVICE

Open 6 A.M. to 8 P.M.

Fresh Local Fish

CORDOVA, ALASKA

## HALVORSEN'S

Men's Furnishing and  
Dry Cleaning

CORDOVA, ALASKA

## MODEL CAFE AND BAKERY

Open 6 A.M. to 2 A.M.

A Pioneer Land Mark



CORDOVA, ALASKA

Here the post-war traveler will  
find the realization of all his  
dreams as he gazes at the  
wonderous beauty of these  
majestic mountains — just one  
example of Alaska's splendor.

In summer's prime, along a  
winding lake-side lane, leading  
several miles into nature's loveliness,  
the nature-lover finds a  
new wonder at every turn.  
Shimmering lake waters reflect  
a gorgeous elevated scene.  
Wriggling and splashing in  
the shallow places, salmon  
play as they make their way  
upstream to spawn; over-  
shadowing the water are bushes  
laden with berries awaiting  
to be plucked. Wild flowers of  
all colors and hues glorify the  
scene. Above, robins and  
sparrows chirp in the hemlocks  
so recently washed with rain.  
Here and there cottages dot  
the landscape, where summer  
visitors may take up residence.

But this area surrounding  
Cordova is also a wonderland  
in winter. Window-panes often  
show the labors of a visit from  
Jack-Frost; but more often rain  
patters down, leaving glistening  
pools to be rippled by the  
wind which sweeps down over  
the northern glaciers, but never  
bringing temperatures zero  
and seldom below 32 degrees  
above.

For those who love the sun  
and the rain, the sea and the  
sky, and the mountains, Cordova  
is the place.

WHILE TRAFFIC IS LIMITED, IT IS NOW POSSIBLE TO  
MOTOR TO ALASKA VIA EDMONTON, CAN.

## ALASKA'S ANNUAL PRIZE

Typically Alaskan is the yearly Nenana Ice Sweepstakes. Each year thousands of Alaskans attempt to guess the month, day, hour and minute, A.M. or P.M. of the break-up of the ice on the Tanana River at Nenana. Tickets are \$1.00 each with no limit on the number an individual can purchase. The exact minute of the break-up is determined by a system in which wires are attached to a clock on shore and then run out to a tripod anchored on the ice. When the ice moves, the wires tighten, opening a switch, stopping the clock.

Accurate data has been kept since 1917.



## ALASKA HIGHWAY TRAVEL

Over a hundred persons traveled the Alaska Highway by car and more than 400 people rode the Buses the first 90 days of this year.

A permit is necessary. Get one at Edmonton, Canada, or Fairbanks, Alaska.

NO. 1

VOL. 1

DEDICATED  
To Charter Member  
Advertisers

Copyright 1946 by  
GENE FUGITT

Patent Pending. All rights reserved.

Published by  
ALASKA INDEXED  
TRAVELOGUE SERVICE

P. O. Box 1151

Fairbanks, Alaska





C  
O  
R  
D  
O  
V  
A  
  
 K  
O  
D  
I  
A  
K  
  
 I  
S  
L  
A  
N  
D  
S  
  
 S  
O  
U  
T  
H  
E  
A  
S  
T  
E  
R  
N  
  
 A  
L  
A  
S  
K  
A  
  
 M  
A  
P



### CORDOVA

A fishing and cannery town on the East shore of Prince William Sound. Population 2000. Salmon, clam, and crab canneries and herring packing plants are the chief industries. 12 canneries pack 570,000 cases of salmon per year. 3 crab canneries pack 6,600 cases per year. 400 boats anchor in the small boat harbor which cost \$295,000 to build.



Salmon Cannery Near Cordova



### CORDOVA AIR SERVICE

CORDOVA, ALASKA

Service to: (Route 1) Valdez, Chitina, Copper Center, Anchorage, Prince William Sound Points, Gulkana, Gakona, Chestochina, Nabesna, Chisana, McCarthy, Rapids, Big Delta, Fairbanks. (Route 2) Valdez, Prince William Sound Points and Anchorage. (Route 3) Katalla, Yagata. Service Hunting, Fishing Parties; floats, skis, wheels.

Offices—Valdez, Anchorage, Fairbanks



PHOTO BY CORNFORTH

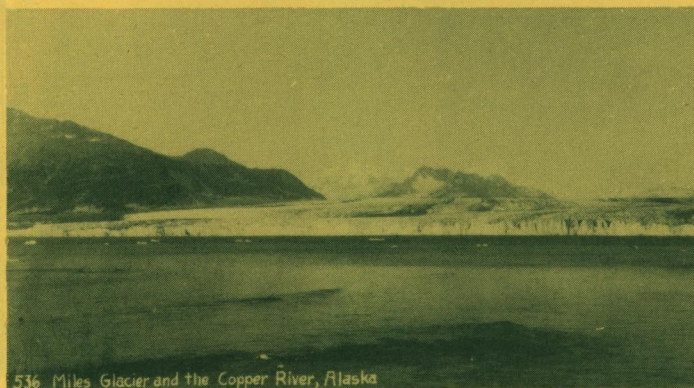
### THE IMPERIAL

Recreation — Refreshments

R. W. "BOB" KORN

CORDOVA

ALASKA



536 Miles Glacier and the Copper River, Alaska

### CORDOVA DRUG CO.

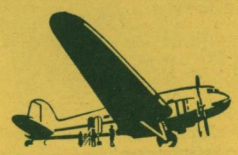
A friendly drug store  
in a friendly city

### THE REXALL STORE

CORDOVA, ALASKA

### NORTHERN HOTEL

50 Rooms — Down Town  
Popular Prices  
Deep in the Heart of the Fish Industry  
MYERS & OBERMEYER, Props.  
CORDOVA, ALASKA



### CRYSTAL LIQUOR STORE

FINE WINES, LIQUORS, BEERS  
Rooming house in connection  
O. M. STROM, Prop.  
CORDOVA, ALASKA

### CORDOVA STEAM LAUNDRY

Woolens Our Specialty  
Pickup—Delivery Service on  
Mondays, Saturdays  
MR. AND MRS. C. W. IHRIG  
Phone 66 Cordova, Alaska

### Windsor Hotel

W

Where the  
"Alaska Spirit Abounds"  
100 Rooms with bath  
20 Apartments  
Friendly, Comfortable

\* \* \*

CORDOVA, ALASKA



### CORDOVA

By HELEN JACKSON  
Cordova High School Senior  
Tucked snugly at the foot of snow-plushed Eccles Range overlooking a bay of aqua-blue and surrounded by spruce covered mountains, lies the picturesque town of Cordova.

### ROSSWOG'S

For:

Alaskan Books  
Moccasins — Slippers  
Alaska Stationery  
Ivory Curios  
Postcards

★

Genuine Gifts from the North

HARVEY'S CAFE  
GOOD FOOD  
COURTEOUS SERVICE  
Open 6 A.M. to 8 P.M.  
Fresh Local Fish  
CORDOVA, ALASKA

HALVORSEN'S  
Men's Furnishing and  
Dry Cleaning  
CORDOVA, ALASKA

### MODEL CAFE AND BAKERY

Open 6 A.M. to 2 A.M.  
A Pioneer Land Mark

W

CORDOVA, ALASKA

Here the post-war traveler will find the realization of all his dreams as he gazes at the wondrous beauty of these majestic mountains—just one example of Alaska's splendor.

In summer's prime, along a winding lake-side lane, leading several miles into nature's loveliness, the nature-lover finds a new wonder at every turn. Shimmering lake waters reflect a gorgeous elevated scene. Wriggling and splashing in the shallow places, salmon play as they make their way upstream to spawn; overshadowing the water are bushes laden with berries awaiting to be plucked. Wild flowers of all colors and hues glorify the scene. Above, robins and sparrows chirp in the hemlocks so recently washed with rain. Here and there cottages dot the landscape, where summer visitors may take up residence.

But this area surrounding Cordova is also a wonderland in winter. Window-panes often show the labors of a visit from Jack-Frost; but more often rain patters down, leaving glistening pools to be rippled by the wind which sweeps down over the northern glaciers, but never bringing temperatures zero and seldom below 32 degrees above.

For those who love the sun and the rain, the sea and the sky, and the mountains, Cordova is the place.

WHILE TRAFFIC IS LIMITED, IT IS NOW POSSIBLE TO MOTOR TO ALASKA VIA EDMONTON, CAN.

### ALASKA'S ANNUAL PRIZE

Typically Alaskan is the yearly Nenana Ice Sweepstakes. Each year thousands of Alaskans attempt to guess the month, day, hour and minute, A.M. or P.M. of the break-up of the ice on the Tanana River at Nenana. Tickets are \$1.00 each with no limit on the number an individual can purchase. The exact minute of the break-up is determined by a system in which wires are attached to a clock on shore and then run out to a tripod anchored on the ice. When the ice moves, the wires tighten, opening a switch, stopping the clock.

Accurate data has been kept since 1917.



### ALASKA HIGHWAY TRAVEL

Over a hundred persons traveled the Alaska Highway by car and more than 400 people rode the Buses the first 90 days of this year.

A permit is necessary. Get one at Edmonton, Canada, or Fairbanks, Alaska.

NO. 1

VOL. 1

DEDICATED  
To Charter Member  
Advertisers

Copyright 1946 by  
GENE FUGITT  
Patent Pending. All rights reserved.

Published by  
ALASKA INDEXED  
TRAVELOGUE SERVICE

P. O. Box 1151 Fairbanks, Alaska





**\$11** **SOUVENIR EDITION**  
**TAX EXTRA** **ANNUAL EVENTS**  
 Fairbanks Winter Ice Carnival. Gulkana Dog Derby  
 Anchorage Fur Rendezvous. Ketchikan Salmon Derby



Copyright 1946, by Gene Fugitt—Patent Pending—All Rights Reserved

## ALASKA-BUS, RAILROAD AND STEAMSHIP SERVICE

Main Offices  
 STEAMSHIP LINES

ALASKA STEAMSHIP CO., Seattle, Wash.  
 ALASKA TRANSPORTATION CO., Seattle, Wash.  
 NORTHLAND TRANSPORTATION CO., Seattle, Wash.  
 CANADIAN PACIFIC STEAMSHIP CO., Seattle, Wash.  
 CANADIAN NATIONAL STEAMSHIP CO., Vancouver, B. C.

### RAILROADS

ALASKA RAILROAD, Anchorage, Alaska  
 WHITE PASS AND YUKON RAILROAD, Seattle, Wash.

### BUS LINES

UNIVERSITY BUS LINES, Fairbanks, Alaska  
 O'HARRA BUS LINES, Anchorage, Alaska  
 MATANUSKA BUS LINES, Anchorage, Alaska



365,000,000 acres in Alaska are in federal ownership.

230,000,000 acres in Alaska are vacant, unappropriated and unreserved. 363,000,000 acres are still unsurveyed.

Alaska has 434 fish traps. 396 are owned by people who are not residents of Alaska.

The Matanuska Valley Farmers Co-operative ass'n sales were \$1,335,016 last year.

The Alaska Railroad grossed \$8,603,546 in revenue last year.

Alaska produced 120,000,000 pounds of herring last year.

Alaska produces over 4,302,000 cases of salmon annually.

Alaska's Indexed Trav-Log  
 Box 574  
 Seattle Wn.

When mailing the

Alaska Indexed

Travelogue,

Mount your

Favorite Photograph

In this space.

## TABLE OF HIGHWAY DISTANCES

ALASKA HIGHWAY  
 Mileage

Fairbanks to  
 Whitehorse.....604

Whitehorse to  
 Dawson Creek.....917

Dawson Creek  
 to Edmonton.....500

RICHARDSON  
 HIGHWAY  
 Valdez to  
 Fairbanks.....371

Valdez to  
 Glenallen Junction.....118

Glenallen Junction  
 to Fairbanks.....253

GLENN HIGHWAY  
 Anchorage to Fair-  
 banks (via Glenn and  
 Richardson  
 Highways).....442

Anchorage to Glen-  
 allen Junction.....190

STEESE HIGHWAY  
 Fairbanks to Circle  
 City.....163

Fairbanks to Circle  
 Hot Springs.....138

ELLIOTT HIGHWAY  
 Fairbanks to Liven-  
 good (via Steese and  
 Elliott Highways).....82

HAINES HIGHWAY  
 Haines to Haines  
 Junction on Alaska  
 Highway.....145

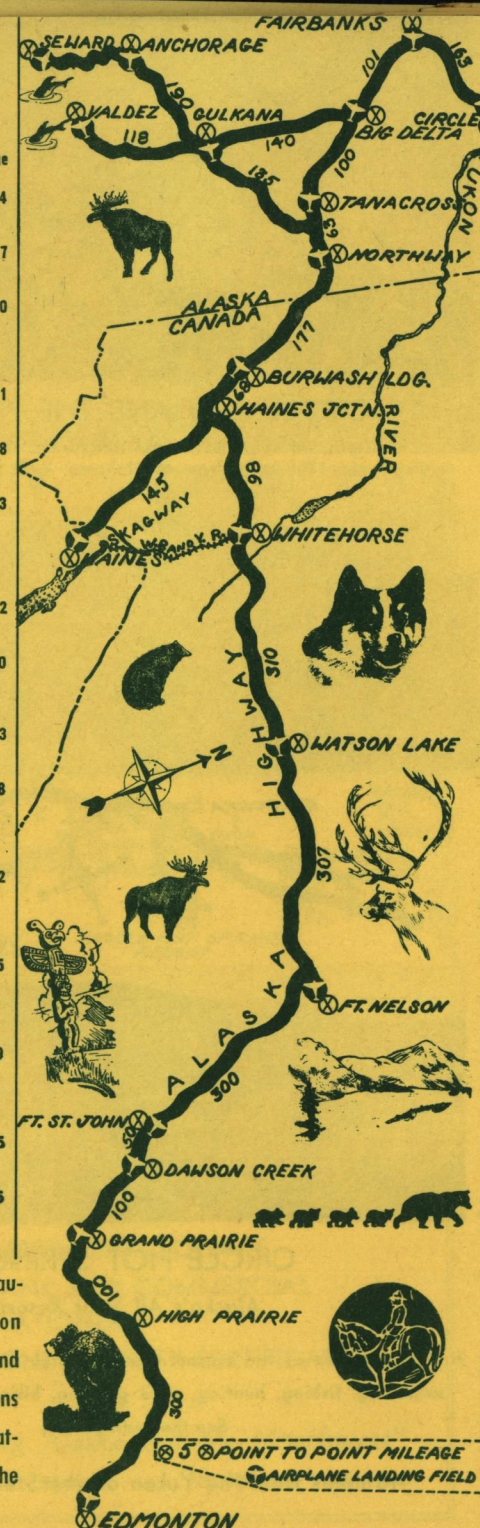
CHITINA ROAD  
 Chitina Junction on  
 Richardson Highway  
 to Chitina.....39

TOK CUTOFF  
 Gakona Junction to  
 Tok Junction on  
 Alaska Highway.....135

SEWARD HIGHWAY  
 Seward to Hope.....75



Contact the proper au-  
 thorities in Edmonton  
 and make hotel and  
 roadhouse reservations  
 in advance before at-  
 tempting a trip over the  
 Alaska Highway.

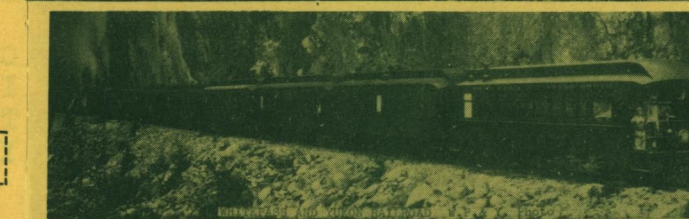


## WHITEHORSE, Y. T.

Strategically located on the Alaska Highway, 604 miles from Fairbanks and 1417 miles from Edmonton, is one of the most rapidly growing cities of the great North. Here the traveler pauses to rest after a long journey as he stops long enough to refuel the car or has arrived from Skagway by rail, or is a passenger north or south bound by bus or plane.

Modern in every detail, with stores and shops to serve the tourist, big game hunter, fisherman and traveler. Excellent hotels, restaurants, gas stations and service shops for the tourist to enjoy. Big game guides are available here to take you on that long planned fishing and hunting trip. All-year bus service to Fairbanks and Anchorage, Dawson Creek and all points to Edmonton. Don't miss the Yukon boat excursion.

River Steamer At Five Finger  
 Rapids - YUKON RIVER Alaska S.S. Photo



WHITEHORSE

ALASKA HIGHWAY MAP

JUNEAU

HAINES

SWIRTAKELE

PESTERBURSTERN

ALASKA MAP



EXTRA ANNUAL EVENTS  
Fairbanks Winter Ice Carnival. Gulkana Dog Derby  
Anchorage Fur Rendezvous. Ketchikan Salmon Derby

# INDEXED TRAVELOGUE

# HIGHWAYS

# RAILWAYS

# AIRWAYS



WIKSTRÖM