

U. S. DEPARTMENT OF THE INTERIOR
BUREAU OF RECLAMATION
COLUMBIA BASIN PROJECT

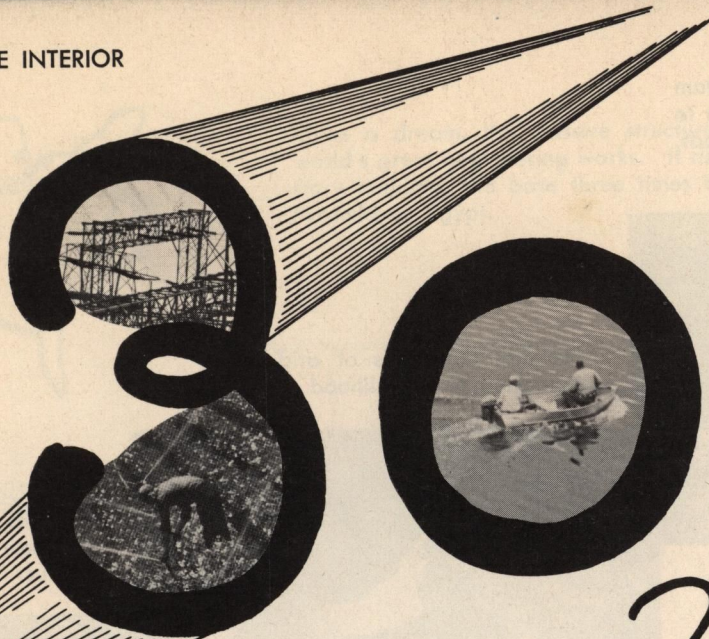
1941

1933



1963

19__



Years
WITH

GRAND COULEE DAM

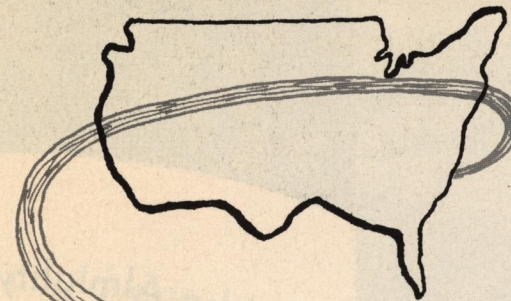
The multi-purpose Grand Coulee Dam disciplines and releases the waters to the thirsty land . . . reduces floods, helps navigation . . .



reclaims thousands of arid acres, unlocking new livelihood.

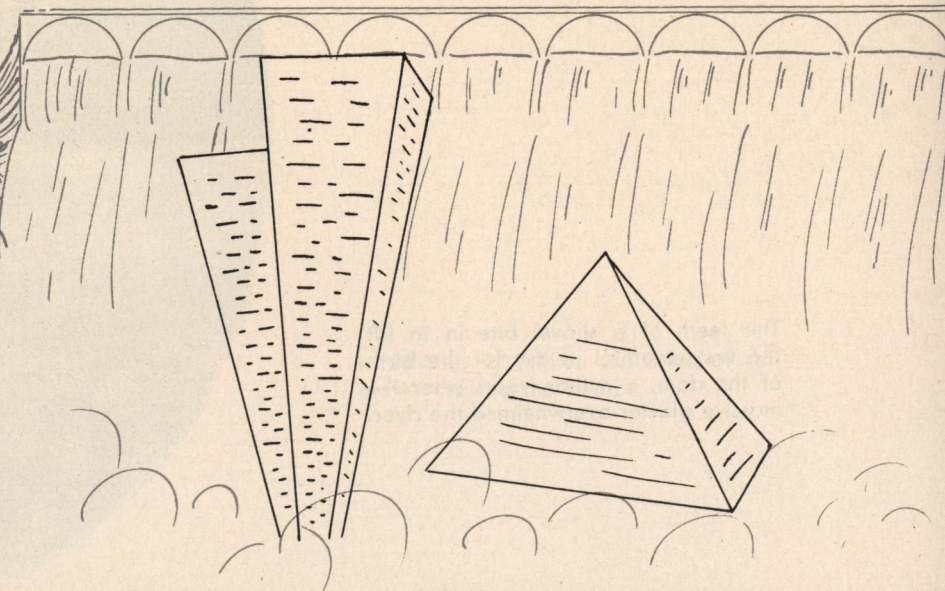


It carries opportunity -- transforming a desert into a possibility and a productive reality.

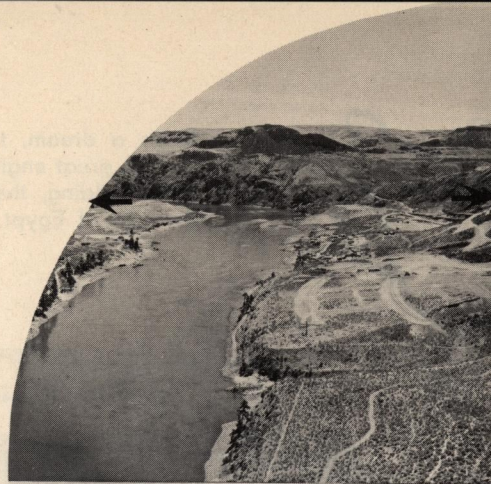


Once a dream, the massive structure materialized into one of the world's great engineering works. It rises in height equal to a forty-six story building, the base three times the area covered by the Great Pyramid of Egypt.

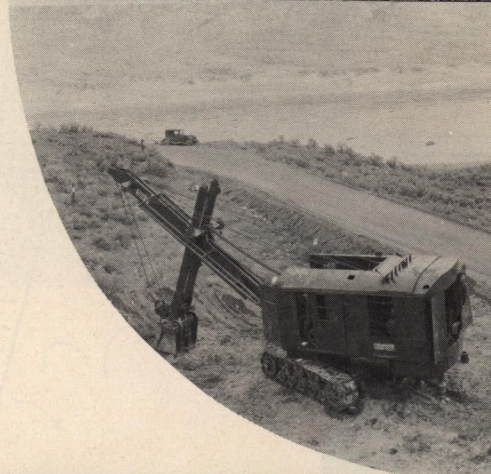
Water thunders downward twice the height of Niagara and the dam's 10 million cubic yards of concrete would build a highway looping the United States.



An early view of the Columbia River before Grand Coulee Dam. Arrows indicate the dam's later location, above the site of an ancient glacier dam.

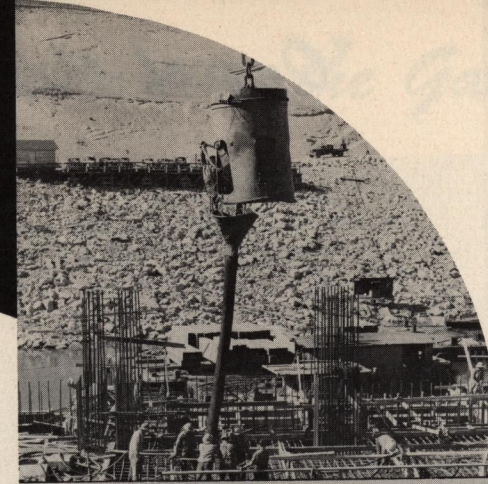


The teeth of a shovel bite in to lift the first mouthful of dirt for the birth of the dam, a million years after the massive glacier overwhelmed the river.

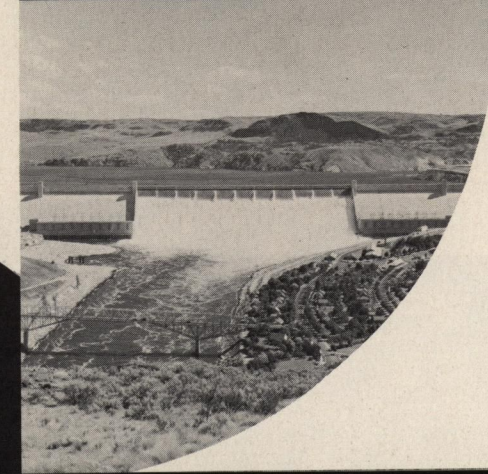


"If the Almighty could dam the Columbia with a cake of ice, why couldn't man do it with Concrete?"

Construction finally begun in the thirties, is shown here in an advanced stage.

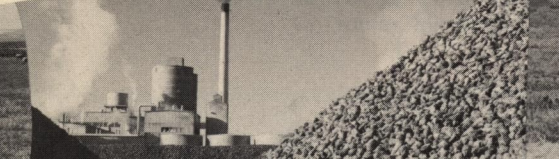
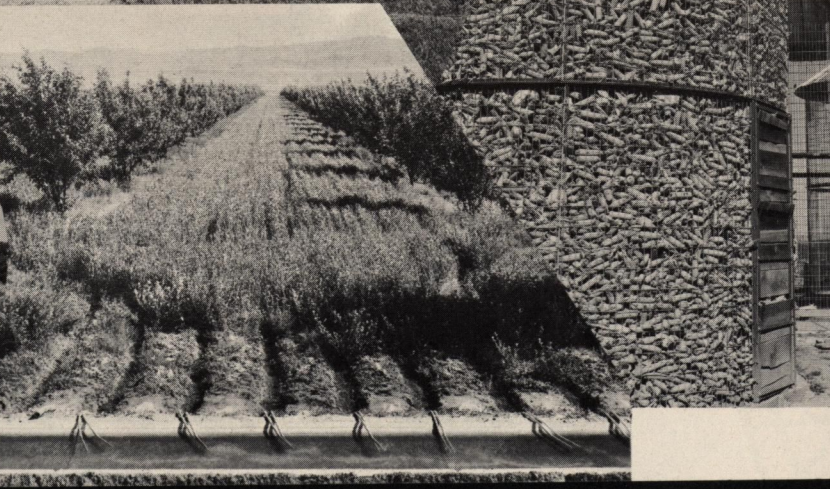


In 1941 a 22 million ton "slab of concrete" crossed the river.



"One of these days the desert will bloom like the Garden of Eden"

The stored waters of Grand Coulee Dam are successfully irrigating almost half a million acres of land in the nation's largest reclamation project. New opportunities for an expanding population await continued development of the Columbia Basin Project.

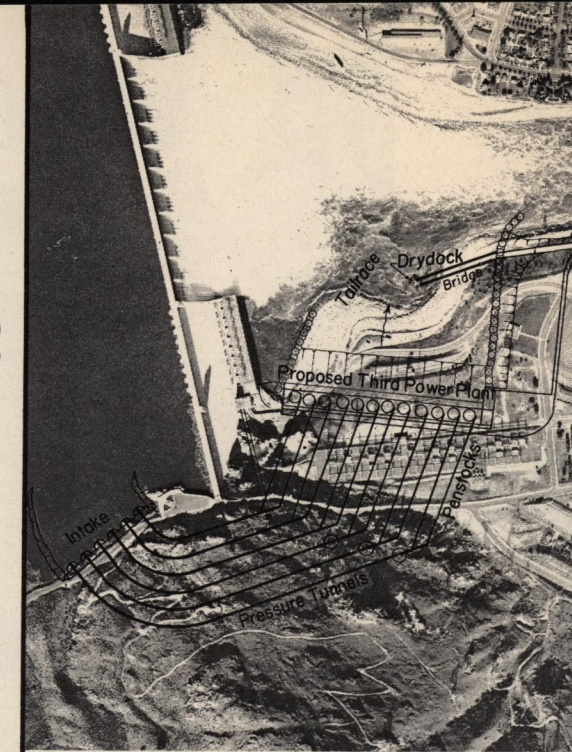
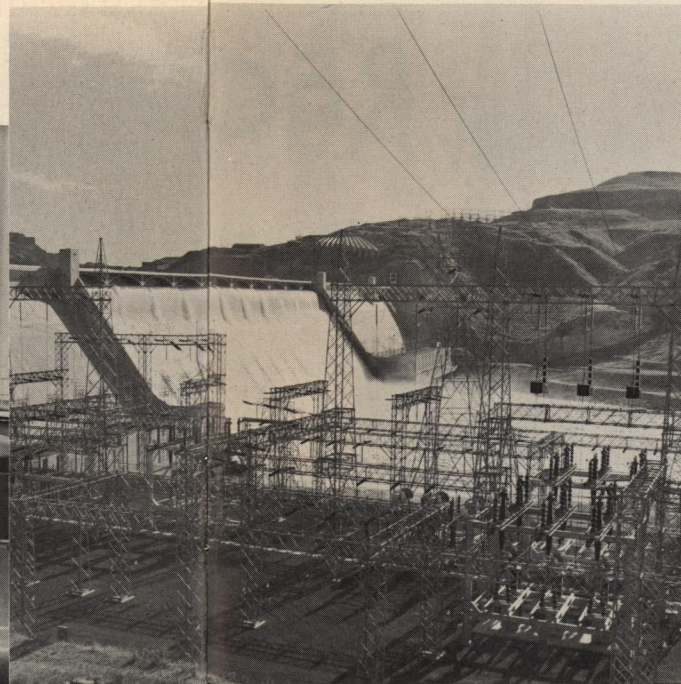
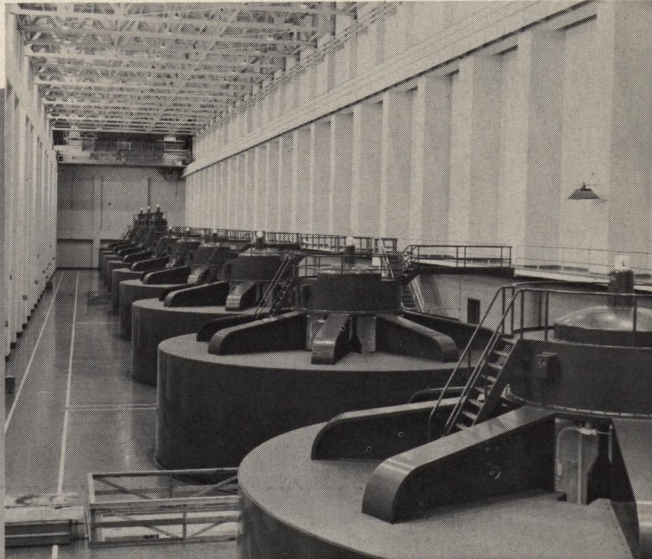
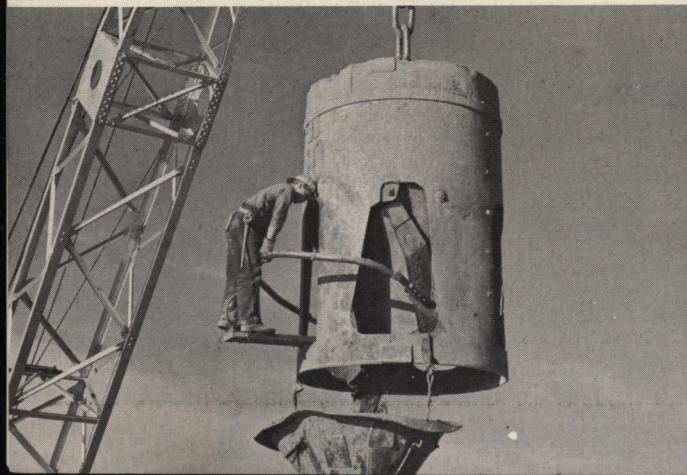


Begun thirty years ago, and
stepping into the future,

the power generated yields
commercial return,

it's multiple purpose
a stable foundation

for the nation's future.

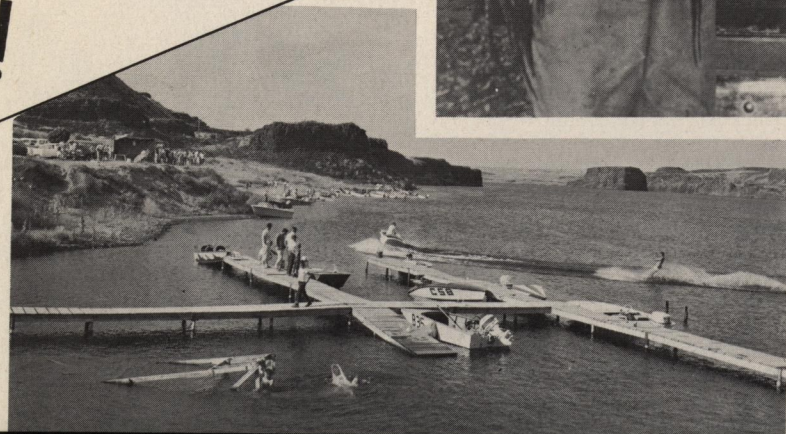


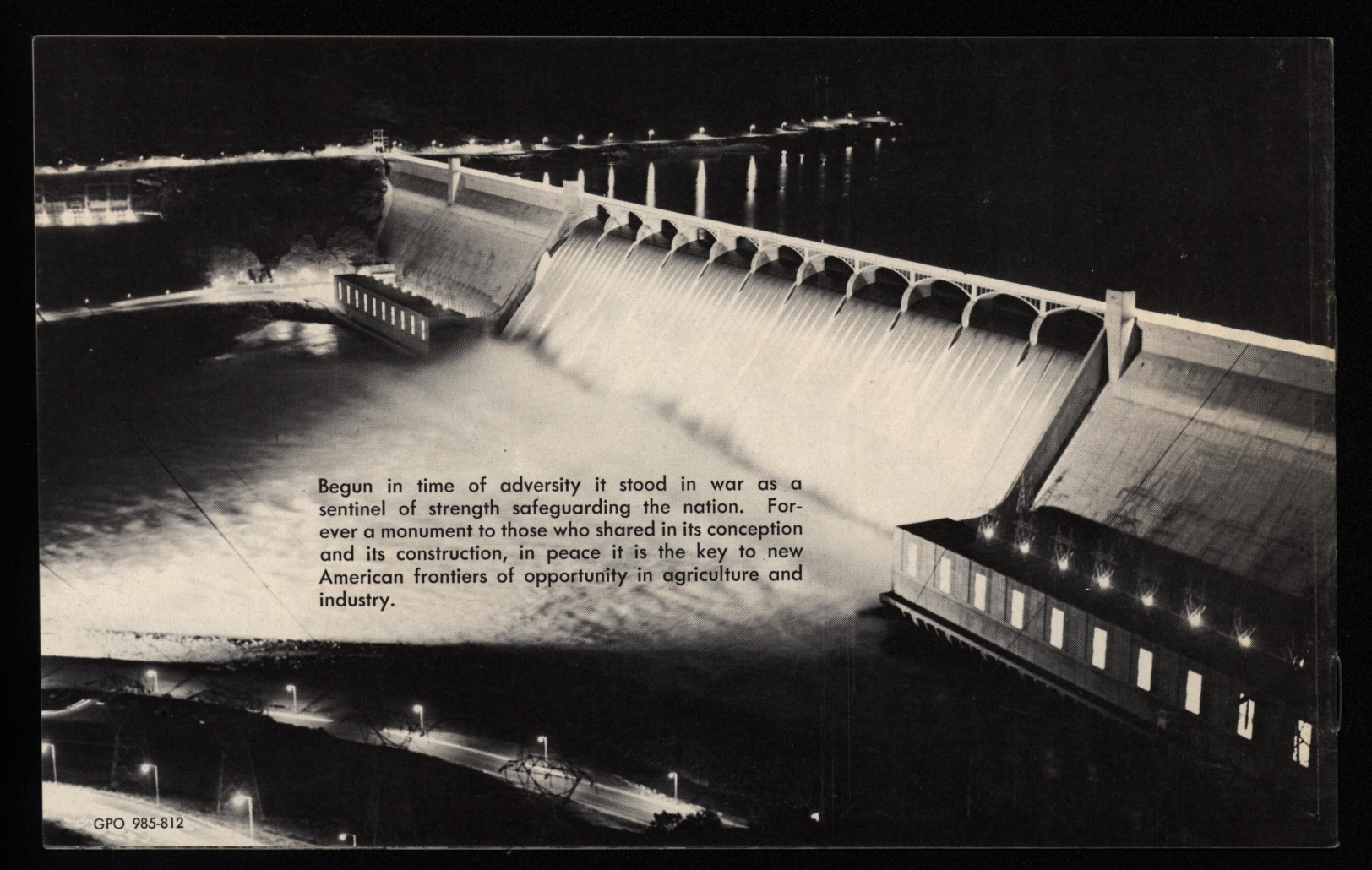
THIRD POWER HOUSE

3.6 million KW additional



RECREATION
TOO!





Begun in time of adversity it stood in war as a sentinel of strength safeguarding the nation. Forever a monument to those who shared in its conception and its construction, in peace it is the key to new American frontiers of opportunity in agriculture and industry.