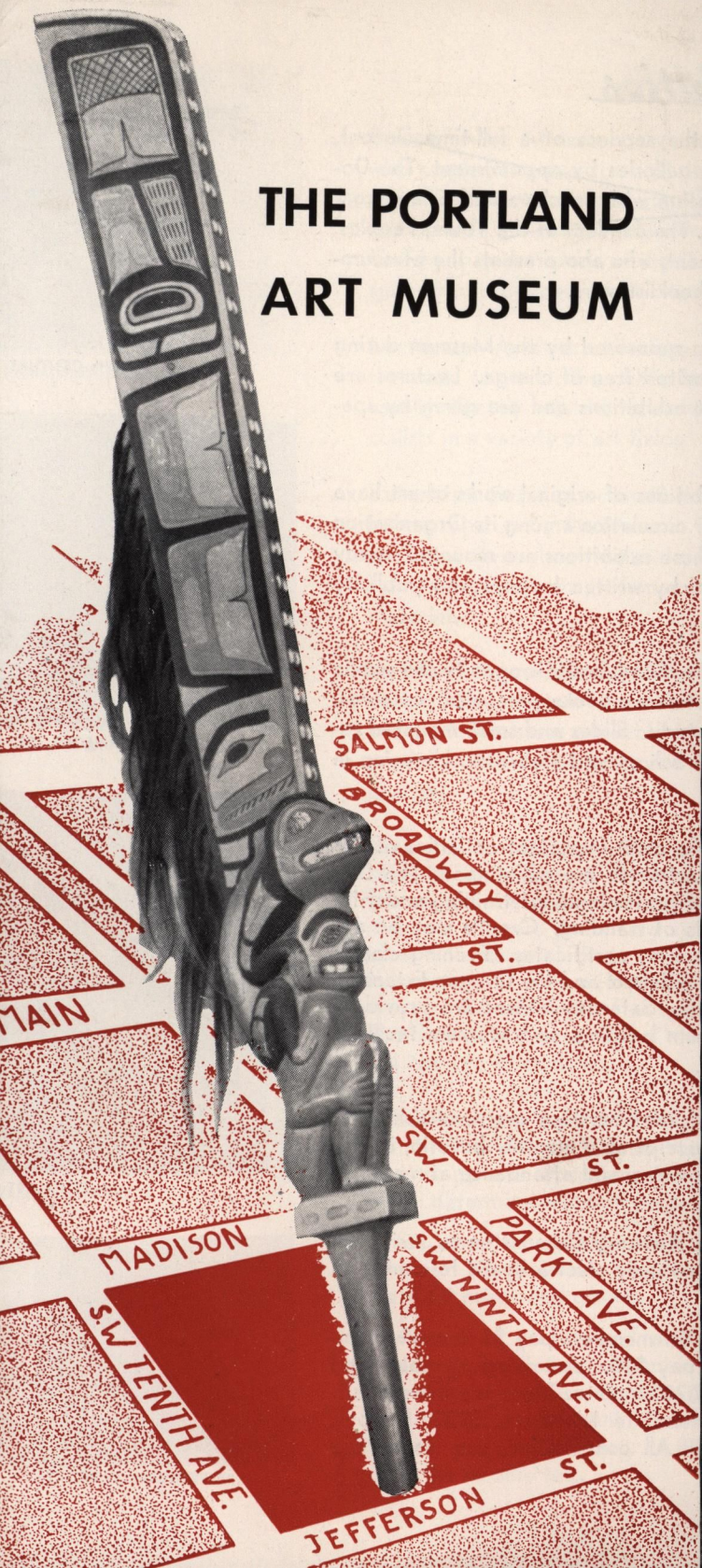


THE PORTLAND ART MUSEUM



PORTLAND ART ASSOCIATION MEMBERSHIP

CLASSIFICATIONS

Endowment—

1. Benefactors—a contribution of \$5,000 or more.
2. Patrons—a contribution of \$1,000 or more.
3. Life Members—a contribution of \$500 or more.

Annual—

1. Sustaining—\$25 annually.
2. Annual—\$10 annually.
3. Non-resident—\$5 annually. Legal residence more than 25 miles from Museum.
4. Professional—\$5 annually. For active clergymen and school teachers.
5. Artist—\$5 annually. For serious artists who submit work for certification.
6. Organization Members—\$10 annual registration fee for non-commercial associations.
7. Commercial Members—Not less than \$25 annually.

PRIVILEGES

1. Members attending meetings of the Association elect the Trustees and determine Museum and Art School policy. The members are owners of a three million dollar institution.
2. Close personal contact with the Museum and its work through a Monthly Bulletin and correspondence.
3. Private receptions and previews of special exhibitions and events.
4. Special lectures, lecture courses and study groups.
5. Artist Members annually elect an Advisory Committee to assist the Director.
6. Organization Members annually elect a Board to confer on state art needs and growth.
7. Association and support of the development of art and culture in Oregon.

All Contributions are deductible from your income tax.

PORTLAND ART MUSEUM

APPLICATION FOR MEMBERSHIP

Date: _____

I hereby apply for _____ membership
(Designate Class)

☐ I enclose remittance of \$ _____ ☐ Please send bill
(Indicate one)

Name _____

Address _____

Telephone _____

Collections

Northwest Coast Indian Art

A comprehensive collection of the work of the Indians inhabiting the narrow coastal strip north of Puget Sound. Objects of everyday use show the imagination and craftsmanship which make this art unique. The collection is permanently installed in a special setting designed by Yeffe Kimball.

Japanese Prints—The Mary Andrews Ladd collection of Japanese Prints is acknowledged to be one of the finest in the West. It is unusually rich in Primitives, and includes examples from each period up to the present century.

Painting and Sculpture—

The Museum's painting galleries, recently enlarged and redesigned, display a variety of painting. Recent additions of Italian and Dutch works were made possible by a long term loan from the Metropolitan Museum.

Metropolitan loans have also greatly enriched the Museum's small collection of sculpture. Contemporary Oregon sculptors' works and the Children's Collection of Small Animal Sculpture are owned by the Museum.

Northwest Artists—Particular emphasis is given to work by Oregon and Northwest artists, which has been collected by the Museum for many years.

Greek and Roman Antiquities—Greek vases in the Sally Lewis Collection are of outstanding quality. Roman lamps and glass, and Egyptian scarabs are of interest.

Chinese Sculpture and Ceramics trace the history of the art from prehistoric times, through terra cotta tomb sculptures, to modern times.



KWAKIUTL MASK, RASMUSSEN COLLECTION



FRANZ HALS PORTRAIT



CYPRIOI SCULPTURE



ART REFERENCE LIBRARY



GREEK VASES



ORIENTAL GALLERY

Activities

Docent—The Museum provides the services of a full-time Docent, who conducts group tours of the galleries by appointment. The Docent is also available for consultation with teachers and others concerned with art and art education. The conduct of the Young Peoples' Gallery is in the hands of the Docent, who also presents the Museum-sponsored broadcast for public school listeners.

Lectures—A series of lectures is sponsored by the Museum during the year, to which the public is invited free of charge. Lectures are usually directly related to current exhibitions and are given by specialists in a variety of art fields.

Extension Services—Small exhibitions of original works of art have been prepared by the Museum for circulation among its Organization Members throughout the state. These exhibitions are mounted, ready for display, and are accompanied by written lectures and publicity material.

Art Reference Library—The Museum Library is open to the public during Museum open hours. Art reference books, pamphlets, catalogs, and periodicals are available for study. Slides and small mounted reproductions may be borrowed for school and club use. Librarian in charge.

Museum Art School—One of the most important activities of the Museum is its School. Three departments are maintained. The Day School offers a four-year course of professional art training under instructors who are practicing artists of standing. Credits may be applied on college degrees and teaching certificates. Evening classes for adults are offered jointly by the School and the Oregon Extension Center. For children of school age, Saturday classes are provided. The School is a part of the Museum building, and Museum facilities are open to its students.

Membership—Several classes of Memberships are available. All members' privileges include the receipt of a monthly bulletin, invitations to private receptions and previews, and attendance at meetings which determine Museum policy.

Artist members annually elect an Advisory Committee to assist the Director. Organization members annually elect a Board to confer on state art needs and growth.

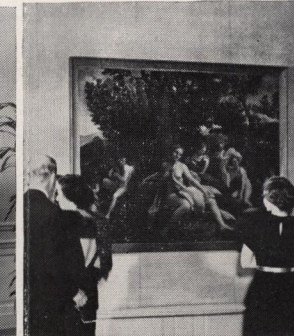
Non-resident, professional, and artist members pay \$5 annually. Annual and Organization members pay \$10. Sustaining members and Commercial members contribute \$25 or more. There are three classifications of Endowment Members: Life Members, \$500; Patrons, \$1,000, and Benefactors, \$5,000. All contributions are deductible from the income tax.



19th CENTURY WEATHER VANE



FRENCH MASTERPIECES, 1941



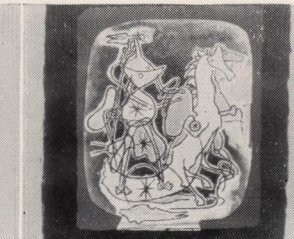
BERLIN MASTERPIECES, 1948



MUSEUM ART SCHOOL CLASS



PERUVIAN TAPESTRY



BRAQUE LITHOGRAPH

Exhibitions

Temporary and Loan Exhibitions

The Museum carries on a regular schedule of exhibitions, which usually change monthly. These changing shows keep Portland in contact with the art achievements of other sections of the world. Dates of current exhibitions are announced in newspapers and by radio, or may be ascertained by inquiry at the Information Desk.

Over a period of several years many outstanding shows have been brought to Portland, such as: MASTERPIECES OF FRENCH PAINTING, 1941, SHIPS FOR VICTORY, 1943, and the BERLIN MASTERPIECES, 1948.

Oregon Artists' Gallery

A gallery is set aside to show works by Oregon artists. The schedule is arranged by the Artist Committee, a group elected by the Artist Membership of the Museum to advise with the Director and the Board of Trustees on matters affecting local artists. Monthly exhibitions are shown. These may be one-man or group shows of painting, sculpture, prints, or drawings.

Young People's Gallery

This gallery furnishes space for exhibitions of appeal to younger Museum visitors. Monthly exhibitions are planned, some of which are made up of the work of children themselves. A young people's board forms a committee of selection for exhibitions of local work.

Print Cabinet

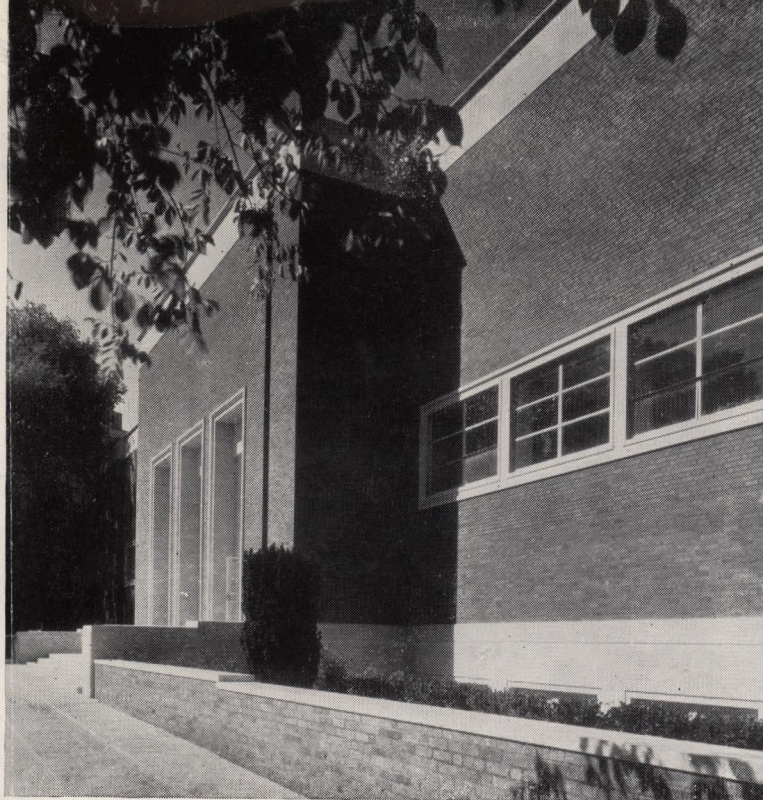
Monthly exhibitions are selected from the Museum's collections for exhibition in the Print Cabinet. Etchings, lithographs and serigraphs, chiefly of the contemporary period, provide quality and variety.

THE PORTLAND ART MUSEUM

For over half a century the Portland Art Museum has been an important factor in Portland's cultural life. On December 12, 1892, a meeting was held to organize the Portland Art Association. Shortly afterward the first Board of Trustees was elected, the members being Henry Failing, W. M. Ladd, W. B. Ayer, Rev. T. L. Eliot, C. E. S. Wood, Dr. Holt C. Wilson and H. W. Corbett.

The Museum is privately owned and maintained by the Art Association and its members. Its aim is to collect and preserve works of art and to further the knowledge and enjoyment of art. Its policy is to serve the public free of charge.

The chronology below tells briefly the story of a Portland institution, founded by a group of Portland citizens, nourished by them, their friends and their families, but devoted to the good of the community at large. It indicates what has been accomplished by their faith and by the enthusiasm that faith has engendered in those with similar ideals throughout the city and the state. Membership in the Portland Art Association is offered to all. The members elect the Trustees who govern its policies and appoint the Director of the Museum. Portland today is a different community from the Portland of 1892. The Museum reflects this change, and looks forward to the coming years of growth and progress.



CHRONOLOGY

- 1892—Portland Art Association organized.
- 1894—Acquisition of Henry W. Corbett Collection of casts of Greek and Roman sculpture. Installed in upper hall of Library building on Stark St.
- 1895—Acquisition of 15,000 Braun photographs of works of art, gift of the family of W. S. Ladd.
- 1905—Museum acquired its first building. Land at corner of 5th and Taylor Streets bequeathed by Henry W. Corbett; money for building given by Mrs. W. S. Ladd.
- 1909—Museum Art School established.
- 1913—Seventeen paintings came to Museum as memorial to Mrs. W. S. Ladd. Dr. Eliot secured anonymous gifts of \$100,000 to complete bequest of \$50,000 left by Henry W. Corbett as endowment available when sum was doubled.
- 1926—Collection of classical antiquities presented by Miss Sally Lewis in memory of her mother.
- 1929—Gayer-Anderson Collection of Egyptian scarabs presented by 26 donors.
- 1930—Fund given by W. B. Ayer for construction of Ayer Wing on S. W. Park Street. Plans drawn by A. E. Doyle and Associate.
- 1932—Mary Andrews Ladd Collection of Japanese Prints presented by anonymous donor.
- 1935—American and European paintings, drawings, prints and objects of art bequeathed to Museum by W. B. Ayer.
- 1937—Oriental rug collection, bequest of Miss Ella Hirsch.
- 1939—Completion of Hirsch Wing on Jefferson and 10th Streets. Architect, Pietro Belluschi. Acquisition of Lehmbruck sculpture, "Standing Woman."
- 1940—First acquisitions in field of Northwest Coast Indian Art. Collection of 30 baskets.
- 1942—Children's Collection of Small Animal Sculpture inaugurated through an anonymous fund.
- 1943—C. F. Adams Bequest: paintings of Barbizon school. Long term loan from Government: prints, paintings, tapestries produced under Federal Arts Project of W.P.A., made through Public Library.
- 1948—Mary F. Failing Bequest: paintings and objects of art. Purchase of Rasmussen Collection of Northwest Indian Art.
- 1949—Long term loans from the Metropolitan Museum of Art.

MUSEUM HOURS—12 noon to 5 P.M. daily; 12 noon to 10 P.M. Wednesdays.

LOCATION—Southwest Park Avenue between Madison and Jefferson Streets.

DIRECTORY

FIRST FLOOR

Information desk
Offices
Museum Art School
Library
Exhibition galleries

SECOND FLOOR

Northwest Coast Indian Art
Classical Art
Oriental Art
Painting and Sculpture Collections

LOWER FLOOR

Packing room
Carpenter shop
Auditorium
Storage
Print cabinet
Cast gallery

BOARD OF TRUSTEES

Dr. Wm. K. Livingston, President; L. Hawley Hoffman, First Vice-President; Mrs. E. B. MacNaughton, Second Vice-President; S. Mason Ehrman, Treasurer; Thomas C. Colt, Jr., Secretary; Pietro Belluschi, R. F. Bessey, Alfred Corbett, David L. Davies, Jan De Graaff, Walter Gordon, Ruth E. Halvorsen, Edmund Hayes, Mrs. D. V. Jennings, Philip Joss, Lloyd J. Reynolds.

ADMINISTRATION

Thomas C. Colt, Jr., Director; Hedley Hill, Comptroller; Max Buhmann, Registrar; Yeffe Kimball, Consultant on Indian Art; Mrs. Lois Diehm, Docent; Mrs. Charlotte Montgomery, Publicity; Miss Maida Heath, Membership Secretary; Miss Phyllis Harvey, Librarian; Miss Jacqueline Rayot, Secretary to the Director; Miss Catherine Powers, Secretary to the Assistant Director and Comptroller; Miss Betsy Jones, Assistant Registrar; Mrs. Lee Lester, Receptionist.

ART SCHOOL

William H. Givler, Dean, Composition, Graphic Arts; Louis Bunce, Painting, Serigraphy; Rachael Griffin, Sculpture, Supervisor of Children's Classes; Leta M. Kennedy, Design, Ceramics; Frederic Littman, Sculpture; Douglas Lynch, Commercial Design; Jack McLarty, Drawing, Painting, Composition; Michele Russo, Painting, History of Art; Mary Taylor, Painting, Design; Charles Voorhies, Drawing, Painting; Lucia Wiley, Drawing, Painting; Jane K. Chase, Registrar; Audrey Quinn, Office Assistant.

MAINTENANCE

Leon A. Craig, Superintendent; C. L. Oviatt, Assistant Superintendent; Eva Martin, Janitor; R. A. Bunn, G. W. Burge, Roy McNeil, H. O. Miller, Guards; F. J. Noble, Gardener; P. P. Timmins, School Janitor; John D. Wells, Night Watchman.