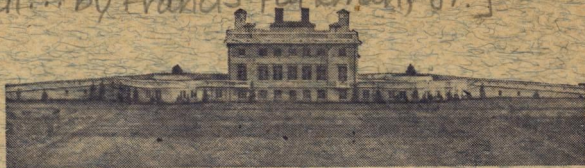


Removed from The California and Oregon Trail... by Francis Parkman, Jr.



Maryhill Museum of Fine Arts

MARYHILL, WASHINGTON

Directory of the Three Floors

ENTRANCE FLOOR—The main galleries, Rodin group, Cardinal Mercier's room, Marshall Joffre collection, and the room of Queen Marie.

UPPER FLOOR—The room of rare bindings, gallery of paintings, statutory group, Mayflower room and the Founder's room. Stairways at either end.

LOWER FLOOR—The early Indian and stone age department; and special exhibits. Stairways at either end.

ROOF TERRACE—Splendid view of the historic Columbia Gorge, Mt. Hood and the Museum's 7,000 acre farm. Stairway, west end only.

MUSEUM HOURS—Open daily 9:30 A. M. — 5:30 P. M. (6:00 P. M. Sundays and Holidays).

DRINKING FOUNTAIN—Entrance floor west.

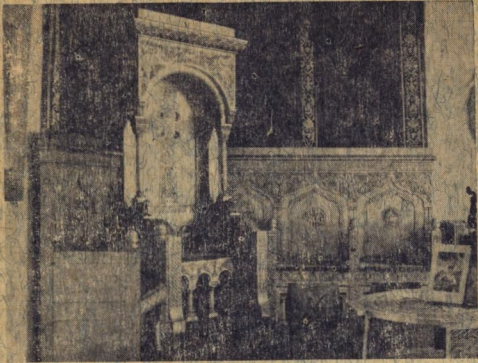
REST ROOMS—Lower floor hall, ladies to the west, men to the east.

PICNIC GROUNDS—Available in shade, tables and water. Parking, west of building.

MAY WE REQUEST—That you refrain from touching exhibits, glass cases and the walls? No smoking in the building.

The unusually modest charge is expended for upkeep, maintenance and betterments, as the Museum organization is non-profit in nature.

(over)



The Throne Room

The Maryhill Museum of Fine Arts, it has been said, is unique in many respects, owing to its location and the variety of objects of unusual interest. Many ask us as to the background of the institution.

The late Samuel Hill, its donor, located at Maryhill in 1908, and purchased 7,000 acres of land, now the property of the Museum. The building was started in 1914, as a residence, but work was stopped in 1917, when America went to war. In 1922 the Museum was incorporated, non-profit in nature, with the plan of gradual development of an institution of worth, where the art from various parts of the world could be studied and international friendships fostered. Upon his death in 1931, the Trustees chosen by him began plans for its completion and after years of building and preparation, it was opened in May of 1940, and over 150,000 visitors have enjoyed it since, excepting the war years, when we felt it should be closed.

The building was dedicated by the late Queen Marie of Rumania in 1926, while on her American trip as the guest of Mr. Hill.

It is hoped that with the passing of the years, it will grow, both in service and in interest to its visitors.

STONEHENGE—Located three miles to the east, the American Stonehenge is one of, if not the first World War Memorials in America. It is an exact replica of the ancient Stonehenge on Salisbury Plain, in England, as it originally was. Built by the ancient Druids over 4,000 years ago, as a place of sacrifice to their Gods of War, Stonehenge has had a place in the literature of the ages, and is said to be a "sermon in stones." Mr. Hill thought it fitting after 4,000 years, to renew the sermon, for nations are still making sacrifices to the war Gods, and he chose it as the model for this memorial, in 1917.