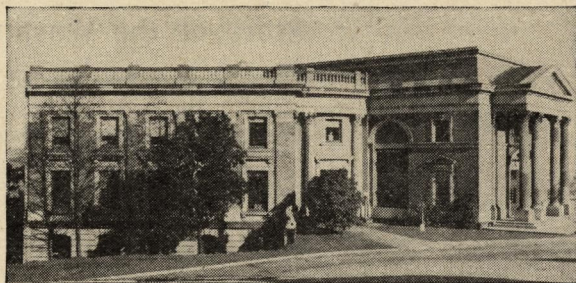


Building Directory

Washington State Historical Society

State Historical Society Building

Tacoma, Washington



WELCOME TO OUR BUILDING We wish to extend a cordial welcome to the Society's building. You will find here a bit of the drama of the Pacific Northwest's beginning, fragments of its pioneer heritage as evidence of the heroic labor, unswerving courage and indomitable fortitude of those who blazed the first trails into this Northwest wilderness and whittled out a new civilization upon these western shores which, until a few years before their coming, constituted the most unknown portion of the globe. While not large, as museums go, we are endeavoring to make this one of the most interesting museums you can visit.

Here you will find something from Washington's yesterdays, also interesting artifacts from many other parts of the world. Each department has much to offer that will be of interest. Members of our staff will be glad to assist you.

FIRST FLOOR

EZRA MEEKER OX TEAM AND WAGON The most famous ox team and wagon in America. To enlist public support for the preservation of the Oregon Trail, along which he had traveled west in 1852 with his wife and baby, Ezra Meeker drove this outfit across the country in 1906-8, to both New York and Washington, D. C. Out of this trip came the Oregon Trail Association, a most active historical organization, which developed into the American Pioneer Trails Association, a strong organization today.

MODEL OF PIONEER SCHOOL On this floor will be seen a model of an early pioneer log school house. The original stood in Puyallup and was 12x16 feet. This one is 9x12 feet and was built according to directions given by the late Chas. H. Ross, who was born on the Oregon Trail in 1852 and attended school in the original building. The logs for the building were donated by the St. Paul & Tacoma Lumber Co.

OFFICE OF PIONEER NEWSPAPER The press which printed the oldest newspaper in Washington, published in the town in which it started, is seen here, also the type used to "set" the paper—the Montesano Vidette. An old Franklin press, imposing stone which started as a tombstone, old typewriter, cabinets, etc., placed here by the Washington Newspaper Publishers Association members.

RELICS OF EARLY WASHINGTON First automobile driven in Washington; cab and cutter owned by Colonel Chauncey M. Griggs of Tacoma; Allen Porter wagon which crossed the plains in 1852 and which he used for 50 years; wheel from wagon in first wagon-train to cross the Cascades—before there was a road; stage coach; first desks used by Governors Ferry of Washington and Wallace of Idaho; pioneer furniture; dugout canoes; kayaks; pioneer tools; pictures of Washington pioneers. First electric dynamo in Tacoma has been made the center of a striking exhibit by City Light of Tacoma, the exhibit tracing by means of transparencies the development of the city light department.

SECOND FLOOR

BOWLES COLLECTION EGGS, NESTS, BIRDS The Bowles Collection is recognized as one of the finest in the United States. We have added modern display in the form of new cases and 10 outstanding habitat exhibits. Taxidermy was by J. H. Gipple and art work by Kenn Johnson. Display cases were built by Wm. LaPointe. The Bowles Collection represents more than 35 years of work by the late J. Hooper Bowles. Habitat displays are the gift of the Washington Hardware Co. and G. E. Karlen.

GUN DISPLAY An outstanding collection of guns, pistols, swords. Included in the display are pieces of equipment used by ancient warriors, now featured in new and spectacular settings.

EGYPTIAN MUMMY Three thousand years ago Ankh Unnifer was a high priest in Egypt. His mummified body will be seen in a new setting between Bowles Hall and the Alaska Room. Unnifer was honored as the Divine Prophet of Min in a day when Egypt was one of the great nations of the world. Seldom can you see as much of a mummy as in this instance. The sarcophagus is one of the most elaborate in America.

ALASKA DISPLAY A bit of the Far North is captured in this department, in the many specimens displayed. Here will be seen kayaks, whalebone carvings, totem poles, masks, fishing gear, parkas and many other articles.

DISPLAY OF MODEL BOATS An unusually interesting display. The M. I. Munch collection of more than 75 models tells the story of the development of the U. S. Navy since 1865. The N. C. Garrison collection includes models of many sailing vessels. Models of early boats on Puget Sound. Models of The Beaver, first steamboat on the Pacific. The boiler from this steamer in building at the rear. Models used in Todd Shipyards. Many other interesting relics.

THIRD FLOOR (Entrance Floor)

WASHINGTON HALL Featuring the S. A. Perkins Photographic Historical Mural. One of the most distinctive halls of its kind in the United States. There are more than 150 illuminated reproductions and transparencies in the hall, set off by a handsome new floor covering, the first of its kind to be installed in the West.

MCCORMICK HALL McCormick Alcove, Isaac Stevens Alcove, Lincoln-Washington and Ferry Collections. Display of old musical instruments. Women's department. Outstanding doll collection, created by Mrs. Ada Bridgman Odenrider. Special displays are frequently seen in this hall.

GENERAL OFFICES Offices of the Washington State Historical Society are on this floor. The Society has postcards, maps and books for sale, which can be purchased at the office. Visitors should not hesitate to stop at the offices if information is desired.

FOURTH FLOOR

INDIAN DISPLAY Outstanding Indian display, including Indian Spirit Canoe Ceremonial, only complete display of these boards in the United States.

INDIAN BASKET COLLECTIONS Unusually fine display of Indian baskets. Included are the Blackwell, Ankeny, Henderson, Eggers, Foss, Edwards, Davidson, Hutchinson Collections. Value of these collections is increasing with succeeding years.

HEWITT HALL LIBRARY Reference library specializes in Northwest history and genealogical records. Also, the Asahel Curtis collection of some 60,000 negatives and plates. Available to the public for prints.

FIFTH FLOOR

ART GALLERY Excellent displays of art. Works of widely known artists on display.

ORIENTAL EXHIBIT General display of Oriental material. Included is large Cloisonne vase, considered one of the finest specimens in the United States. Much time can be spent on this floor.

Story of the Washington State Historical Society

ORGANIZATION Shortly after Washington budded into statehood in 1889, a movement was started looking toward the organization of a state historical society. C. E. Hobart, a retired newspaper man and cousin of the Hon. Garrett Hobart, later vice-president under William McKinley, took a leading part in this movement. An organization was completed in 1891 with Elwood Evans, lawyer-historian, as its first president, and Hobart as secretary. There were seven members of the Board of Curators. In 1893 this was increased to nine and at present there are 24 members of the Board.

FERRY MUSEUM ORGANIZED In 1893, largely through the efforts of Col. C. P. Ferry, son-in-law of Gen. M. M. McCarver, founder of Tacoma, the museum was organized. In 1930 the museum property was deeded to the Society and the Ferry Museum, as such, ceased to exist. The Society now occupies the entire five floors and additional space is very much needed. The first unit of the Society's building was completed in 1911, and the Ferry Museum was built four years later.

LEGISLATIVE SUPPORT The first legislative appropriation for operation of the Society's building was made in 1905 and amounted to \$2,000. At this time the museum was housed on the fifth floor of the courthouse, where the Society also maintained offices.

WASHINGTON HIGHWAY MARKER PROGRAM In 1908 the first of many markers and monuments commemorating historical events and places was erected under Society sponsorship. The 1949 legislature created a State Historical Marker Commission, of which the Director of the Society is a member, and a comprehensive program of marker development is assured. The legislature also recognized 1953 as the year marking the attainment of Territorial status and assigned to this Society the responsibility for developing an adequate program. To the State Parks and Recreation Commission was given the task of acquiring historical sites in Washington. The legislature passed a law permitting Boards of County Commissioners to cooperate financially with county historical museums.

DISPLAYS Visitors in the building for the first time, will be very pleasantly surprised by the large variety of displays to be seen. So far as possible up to the present time, related objects are displayed together. Each of the five floors will offer the visitor a pleasing variety.

WASHINGTON HISTORY TEEMS WITH INTEREST Some are careless enough to say Washington has no historical background, no romantic past. They are wrong. With a 13-star flag as a foundation, one cannot but be impressed by the fact that Washington is a very young state. At the time this flag contained but 13 stars the Northwest was the most unknown part of the world. From a young, struggling country, the United States has come forth as the leading nation of the world, with responsibilities in keeping with such development. In the history of Washington are found events, which in themselves would hold interest but a few minutes, but as we look back on Washington and Northwest history, some of these events loom large on the pages of Northwest history. There was active rivalry between the United States and England as to where the boundary should be located, and it was not until 1845 that agreement was reached. Few realize the importance of that treaty. We should realize that England expected to own the land north of the Columbia River, while the United States was claiming land as far north as the southern boundary of Alaska. The boundary was finally fixed at the 49th parallel, a most happy solution for all considered.

Had the boundary not been settled as it was, world history might have been changed profoundly. Had the boundary

been fixed at the southern boundary of Alaska, as the United States desired, it is contended that Canada would not have been developed, with the result that England would have been denied her important support in both wars. Many Canadians are certain the Empire could not have survived without that support. Had the boundary been fixed at the Columbia, as England desired, there would have been no Coulee Dam or Bonneville power and possibly no atomic power development. Puget Sound would have been closed to American shipping. The little word "if" looms pretty large when all these possibilities are considered. A great many events, unimportant relatively in themselves, become very important when the jig-saw puzzle of Northwest history is put together, so persons and events become important as their story unfolds in a historical museum.

TOO BIG FOR ONE VISIT There is too much in this building to see in one visit—that is, if you want to get the most from your visit. Many go through the entire building on their first visit and return to make a more intensive study of the different floors, upon many of which it is easy to spend an entire day.

ARTICLES FOR SALE The Society has a number of articles for sale. Probably the most important is its new Historical Map, which is one of the finest of its kind published in the entire country. This map is 22 x 34 inches, printed in seven colors on heavy map paper. Some 34 sketches are found, each depicting a historical event. Approximately 100 historical events are recognized on the map, on the reverse side of which is a condensed history of Washington and a map showing the origin of names of the counties. Students of Washington history should not fail to secure one of these maps. On sale also are postcards showing scenes in the building. Why not buy a complete set of cards—there are 38 in the set—and secure five free. Several books are also on sale. Ask any member of the staff about these, or inquire at the office.

MANY PROGRAM MEETINGS HERE Many organizations are holding program meetings in the building, members of the organization being taken on a tour of the building by the Director. Arrangements for such meetings should be made through the office, to avoid conflict in dates.

"FRIENDS OF THE LIBRARY" Join this novel organization and help build up our growing library. Secure a list of books from the office, pay for one of the books needed in the library, and you are a member—your name in the book and a membership certificate.

AN INVITATION TO JOIN SOCIETY We would like to invite you to active participation in the work of preserving Washington history through membership in the Washington State Historical Society. Membership includes subscription to the Pacific Northwest Quarterly, News Letter and other Society publications, discount on historical maps. The cost is but \$2 annually. A life membership costs but \$25. An enrollment blank follows:

WASHINGTON STATE HISTORICAL SOCIETY
Tacoma, Washington

Please enroll me as a member

Name

Address

City

Check () Cash () Life () Annual ()

Rest Rooms: Women, 1st and 3rd Floors; Men, 1st and 4th Floors
HOURS: 9 to 5 WEEKDAYS, EXCEPT MONDAY; 2 to 5 ON SUNDAY