

# *Grand Coulee Dam*

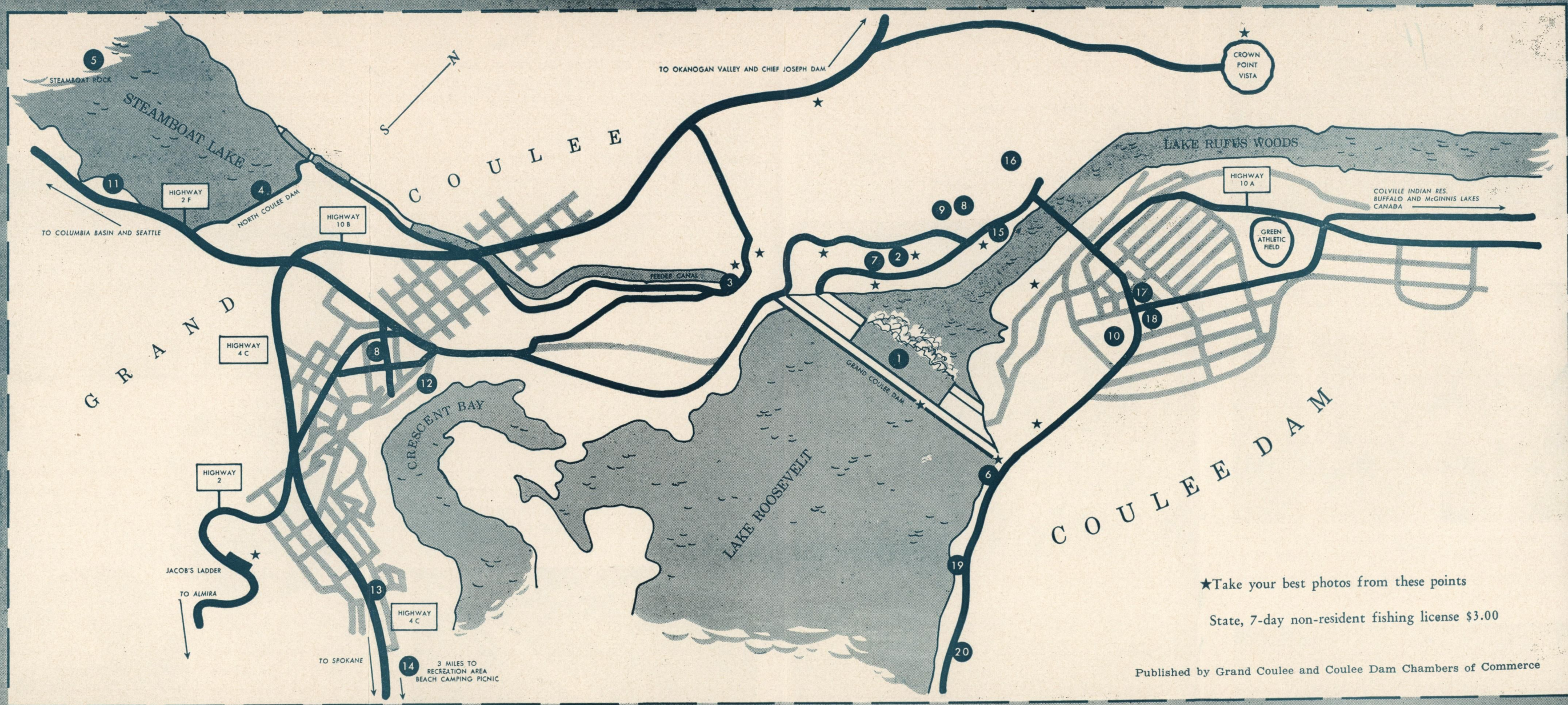
WASHINGTON'S NEWEST YEAR 'ROUND  
VACATIONLAND



## *Eighth Wonder of the World*

Biggest attraction in Washington State, the Grand Coulee Dam roars a friendly greeting to visitors from all parts of the world. Just 87 miles west of Spokane, it is the largest masonry structure ever built by man. Here is the world's largest producer of hydro-electric power, and fountainhead of the vast Columbia Basin Irrigation Project.





★Take your best photos from these points

State, 7-day non-resident fishing license \$3.00

Published by Grand Coulee and Coulee Dam Chambers of Commerce

#### POINTS OF INTEREST—

1. Grand Coulee Dam
2. Bureau of Reclamation Tour Center
3. Pump Discharge Head-works
4. Equalizing Reservoir North Holding Dam

5. Steamboat Rock and Resort Facilities

6. Roosevelt Memorial, Parking Area (Foot traffic allowed on dam)

7. Tourist and Travel Information
8. Post Offices (Two)

9. Telephone Office Headquarters

10. Community Hospital

#### RECREATIONAL AREAS

11. Electric City Swimming Beach - Picnic grounds

12. Martin Rd. Camp area

13. Grand Coulee City Park Picnic Area

14. National Park Service Recreation Area - Picnic - Swimming-Camping (3 miles from Grand Coulee on Highway 4C)

15. Douglas Park - Picnic Grounds

16. Columbia Park - Picnic Grounds - Swim Pool

17. Mead Park - Picnic Grounds - Free Tourist Movies - Washington State Patrol

18. Mead Park Camping

19. Lake Roosevelt Swimming Beach

20. National Park Service North Marina Recreational Area - Picnic Grounds - Boating - Camping Area

Legend

Come visit—  
see all!



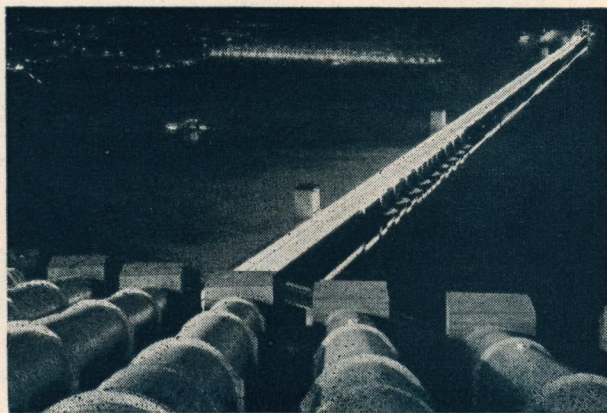
## *A True Vacationland*

One of the last great frontiers of the West, the Grand Coulee Dam area is also the nation's newest outstanding vacation playground. Range riding cowboys, tribes of Indians, and many other natural features of the old West still remain in this area. There is hunting and fishing to delight the sportsman's heart. Lakes, both large and small, are amply stocked with trout, bass and other game fish. Upland birds and migratory waterfowl provide excellent hunting. Big game—deer, elk, and bear—range within a short motor trip from Grand Coulee Dam. A 211-mile string of navigable lakes offers some of the best boating found anywhere. Sportsmen, motorists, hikers, swimmers, campers—all may find their ideal vacation in this truly great recreational area.



## *Facts About Grand Coulee Dam*

Length at crest ..... 4,173 feet  
 Height above lowest bedrock ..... 550 feet  
 Spillway width ..... 1,650 feet  
 Cement content ..... 48,000 carloads  
 Excavation for the dam ..... 22,630,999 cu. yds.  
 18 generators ..... Capacity 2,340,000 K.W.  
 10 Pumps ..... Capacity, each 12,000 gal. per sec.



Night view of the top-of-the-dam roadway and town as seen from the Headworks. The night view of Grand Coulee Dam, with the falls lighted from the top, is an attraction visitors will long remember.

## *Recreational Opportunities*

Excellent Recreational Areas have been developed for general public use by local, state and national services. (See inside map) The area offers facilities for over 1100 overnight guests, besides several camping areas.

Most denominations represented by area Churches.



*Picnic grounds with  
 barbecue pits and play-  
 fields beckon the  
 tourist for family  
 recreation.*



*Popular swimming  
 beaches and a swimming  
 pool to cool visitors on  
 warm days.*

The Bureau of Reclamation's Information Center is in the vista house on the west side of the Columbia River. Lecturers use models of the dam to depict construction phases. Lectures and tours of the Power House are given every day of the year on the hour.

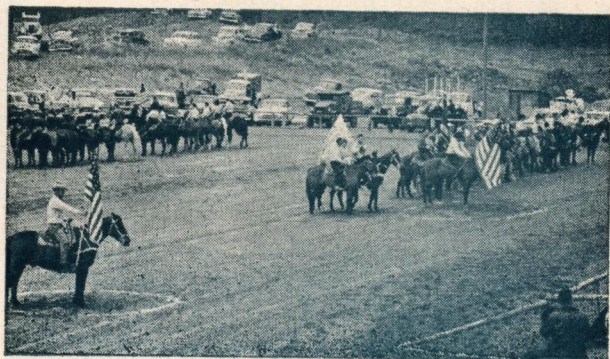




Indian Pow Wow at Nespelem, sixteen miles north of Grand Coulee Dam, on highway 10-A.



The "Big Ones" are there in Steamboat, waiting for your bait—Trout, Bass, Ling and acres of Perch. New plants in Buffalo and McGinnis, on Reservation, along with good stream fishing, your choice.



The "Ridge Riders" Horse Show provides colorful Western entertainment.