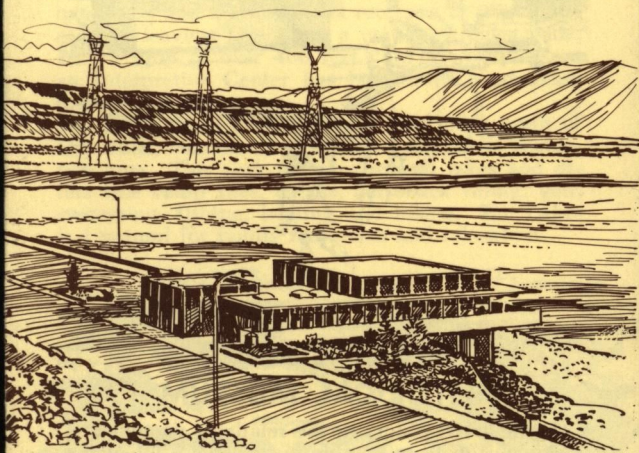


You are
visiting one
place of interest
in the

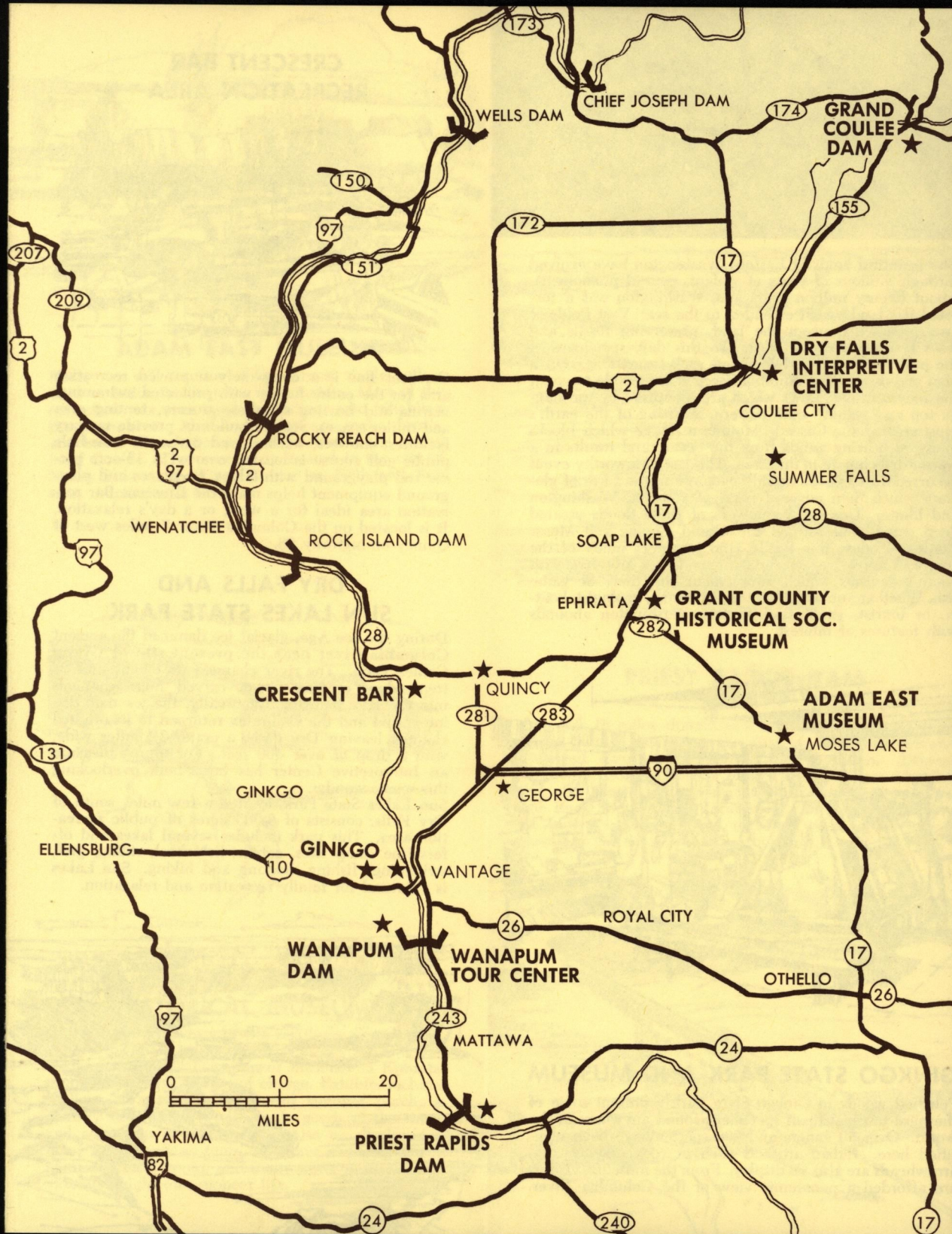
COLUMBIA BASIN.....

*Why not see more
of them while you
are here*



WANAPUM TOUR CENTER
A Very Popular Attraction

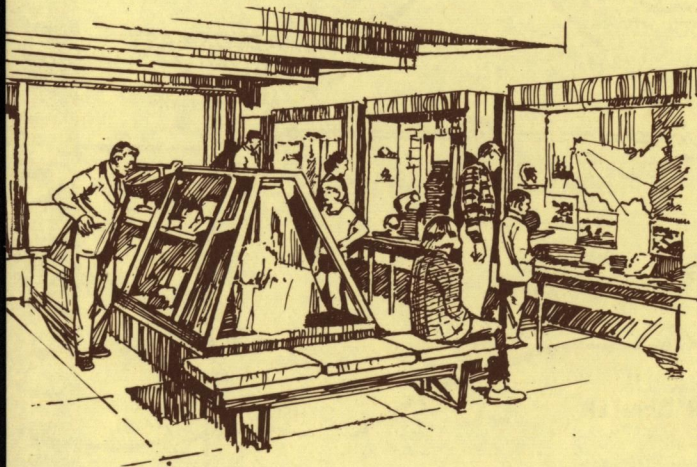
COLUMBIA BASIN POINTS OF INTEREST MAP
PLACES TO SEE... THINGS TO DO



COLUMBIA BASIN POINTS OF INTEREST MAP
PLACES TO SEE... THINGS TO DO

A Land of Inspiring Beauty for Pleasant Recreation

The beautiful lands of Eastern Washington have evolved through millions of years of violent, natural phenomena. About twenty million years ago, Washington was a forested flat land which extended to the sea. Vast fields of lava repeatedly swept the land, preserving fossils and trees beneath a rocky crust. To this day, specimens of the past may be found in many rock formations. On a boat trip down the Columbia River, it is possible to count the recurrent lava flows which are identified by the slaggy top and column base pattern. Shifting of the earth's crust created the Cascade Mountain Range which blocks moisture bearing winds from the ocean, and results in a warm, dry climate in this area. The last noteworthy event occurred 15 to 20 thousand years ago in the form of glaciers which then covered parts of Canada, Washington and Idaho. The erosive powers of these floods created deep canals and formed the Grand Coulee and Moses Coulee. Today, this fertile land produces much of the country's apples, wheat, and sugar. Lakes are alive with micro-organisms which supplement the diets of game fish. Whether you are a hunter, fisherman, geologist, boater, or tourist, you'll find Eastern Washington abounds with features of interest.



GINKGO STATE PARK AND MUSEUM

Petrified woods in Ginkgo State Park represent some of the most unusual fossil specimens found anywhere in the world. Over 50 genera and 200 species have been identified here. Indian artifacts such as rock carvings and arrowheads are also on display. From the museum, visitors are afforded a panoramic view of the Columbia River.

CRESCENT BAR RECREATION AREA

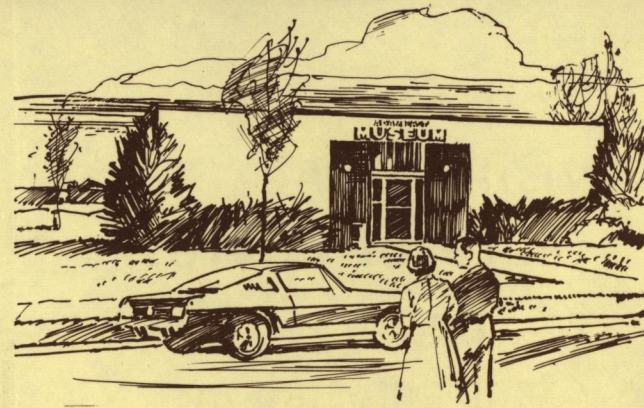


Crescent Bar is a completely improved recreation area for the entire family with protected swimming, marina and boating supplies, grocery, tenting area and trailer spaces. Service buildings provide sanitary facilities, showers, washers and dryers. A nine-hole public golf course is located nearby. A 15-acre picnic and playground with tables, fireplaces and playground equipment helps make the Crescent Bar recreation area ideal for a week or a day's relaxation. It is located on the Columbia River 7 miles west of Quincy on highway 28.

DRY FALLS AND SUN LAKES STATE PARK

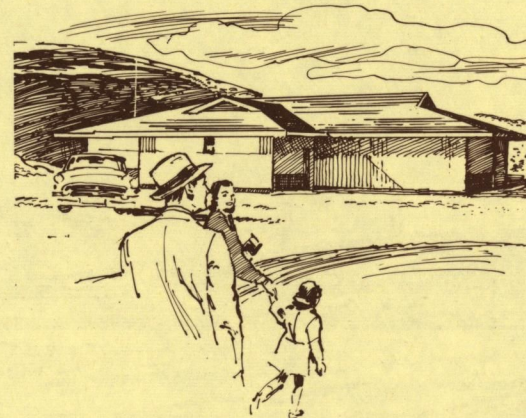
During the Ice Age, glacial ice dammed the ancient Columbia River near the present site of Grand Coulee Dam. The river changed its course and its tremendous eroding power carved huge channels into the lava plateau. Eventually, the ice dam disintegrated and the Columbia returned to its original channel leaving Dry Falls, a crater 3½ miles wide, with a drop of over 400 feet. For tourist pleasure an Interpretive Center has been built overlooking this scenic wonder.

Sun Lakes State Park, located a few miles south of Dry Falls, consists of 3,365 acres of public recreation area. This park includes several lakes and offers fine camp sites, cabins, horseback riding, golf, swimming, fishing, boating and hiking. Sun Lakes is a natural for family recreation and relaxation.



ADAM EAST MUSEUM

Here, you will see one of the largest single collections of Indian artifacts in Washington. Most of the collection was once used by Indians who inhabited the basin area. Also on display are rocks, fossils, and bones of prehistoric animals found in the famed Lind Coulee. The museum is located in the city of Moses Lake at the Civic Center on Fifth and Balsam. Admission is free.

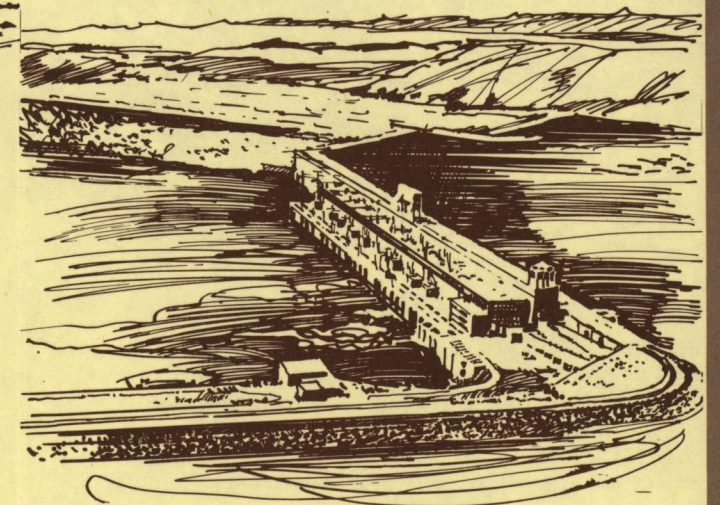


GRANT COUNTY HISTORICAL MUSEUM

With the grand history of this relatively young state, we are fortunate to be able to preserve a bit of the color of the past. The pioneer museum in Ephrata is open to the public free of charge. Exhibits include replicas of a typical homestead summer porch, a country store stocked with trade goods of the time, and a kitchen of that period. Also on display are other items such as tools, branding irons, farm implements, toys, books, and many other items to provide an insight into pioneer life.

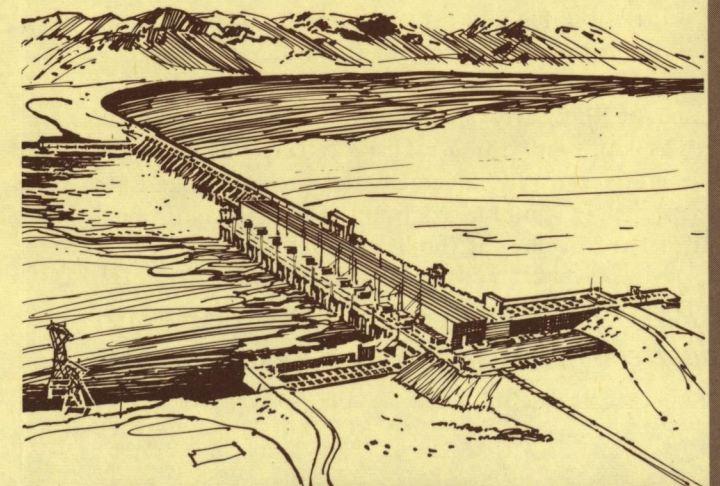
WANAPUM DAM

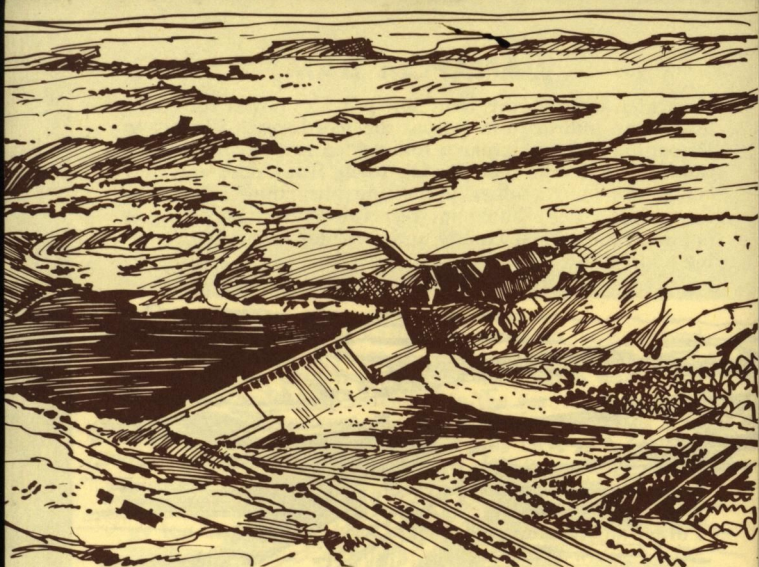
Dedicated in 1966, this dam now provides power for cities, towns and industry throughout the Northwest. Visitors to Wanapum Dam may take a self-guided tour of the generation facilities. The fish viewing room, fish ladder and tour center are among other interesting attractions offered to the public. The Wanapum reservoir is fast becoming a popular recreational facility and provides swimming, boating and fishing.



PRIEST RAPIDS DAM

Located 18 miles downstream from Wanapum Dam, the Priest Rapids Dam was the first of these two privately financed dams to be placed into operation. Although somewhat isolated, Priest Rapids Reservoir provides fishing and boating. Boats may be launched at Beverly and the Buck Shot Ranch. Vacationers visit this area in search of Indian arrowheads and petrified wood which may be found on the nearby Saddle Mountains.





GRAND COULEE DAM

Built in the 1930's, Grand Coulee Dam has been cited as one of the seven engineering wonders of the modern world. Construction of a third powerplant was authorized by Congress June 14, 1966, and begun in the spring of 1967. This 390 million dollar project will nearly triple the present power capacity of Grand Coulee Dam and provide space for installation of six additional generators. The popular and dramatic summer evening spillway lighting program will continue to be featured as construction schedules permit.

.....

WANAPUM TOUR CENTER



The Tour Center at Wanapum Dam is one of the unique interpretive centers of the Pacific Northwest. Artifacts, photos and artwork provide an interesting and educational insight into the Indian, fur trader, soldier, miner and rancher's life. A spectacular diorama of the early steamboating on the Columbia River is presented in a realistic setting. Bronze statues, a fountain, Indian canoe and a topographic river map of the Columbia are but a few of the additional attractive displays at the Tour Center.

Prepared for your Enjoyment by
PUBLIC UTILITY DISTRICT OF GRANT COUNTY

AN ELECTRICAL UTILITY OWNED AND OPERATED BY THE
PEOPLE OF GRANT COUNTY